



WORKTOPS/UNDERCOUNTERS

COMPACT SERIES MODELS 9000/9000F-290

Self-contained refrigerated work top unit with back-mounted removable, replaceable, R-290 or R-134a refrigeration system.

PROJECT NAME:

LOCATION:

ITEM NO:

QTY:

MODEL NO:

AIA NO:

SIS NO:

CSI SECTION: 11400

AVAILABLE MODELS:

REFRIGERATORS:

- 9404-290
- 9402-290
- 9404-32-290
- 9404-32D-290
- 9802-7
- 9301-7
- 9302-7
- 9602-7
- 9604-7

FREEZERS:

- 9404F-290
- 9402F-290
- 9404F-32-290
- 9802F-290
- 9301F-290
- 9302F-290

STANDARD FEATURES:

- Self-contained, removable, replaceable refrigeration package that utilizes “CFC free” R-134A or R-290
- “Front Breathing” refrigeration system
- Self-closing doors
- 6” casters standard on all “-290” models (no legs available)
- 3” casters standard on 9404-32 models (no legs available)
- “-7” models will have a hot gas condensate removal
- “-290” models will have a condensate drip pan mounted on the bottom of the unit

CABINET EXTERIOR: The top, sides, and front are stainless steel. Cabinet top to be one piece die-formed 20 gauge stainless steel with 1 1/2” high square nosing. Bottom and back of unit are corrosion resistant steel. Door openings are thermo-formed ABS plastic, which provide an easily cleanable thermal-break containing a full perimeter magnetic strip for positive sealing of press-fit gasket.

CABINET INTERIOR: Interior of cabinet is fully coved to meet N.S.F. standard #7. The interior bottom, back, and top are anodized aluminum with coved corners for easy clean-up. The interior ends are ABS. Unit insulated with a minimum of 2.5” CFC free, foamed in place polyurethane. Model 9404-32D-290; each drawer contains two 12” x 20” x 6” deep polycarbonate pans. Drawer tracks are 14 gauge stainless steel with 1 5/16” stainless steel ball bearings, self-closing and removable.

DOORS: Stainless steel front with easy to grasp recessed handles, mounted on heavy duty concealed hinges. Hinges are all stainless steel with bronze pivot pin in nylon bushing, spring loaded to be self-closing. Door with foamed in place insulation, press fit magnetic gaskets - (designed for installation & removal without tools), and deep draw ABS interior liner for maximum insulation value.

REFRIGERATION: CFC free, R-134a or R-290 back-mounted refrigeration system to be self-contained with evaporator blower coil, compressor, thermostatic control, forced-air condensing coil and capillary tube contained in removable assembly. Condensate drip pan provided (-290 models). Units totally prewired and to be supplied with 8’ cordset (NEMA 5-15P) for 115V operation. “Front Breathing” refrigeration system with integrated rubber bumpers provide 1” rear clearance.

ORIGIN OF MANUFACTURE: Designed and manufactured in the United States.

Model 9402-290 shown.

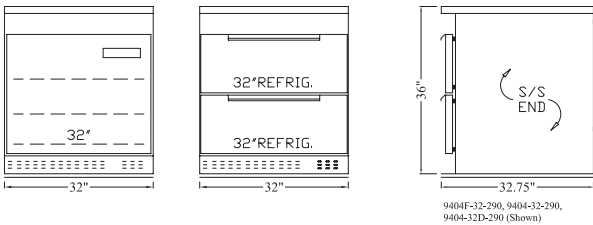
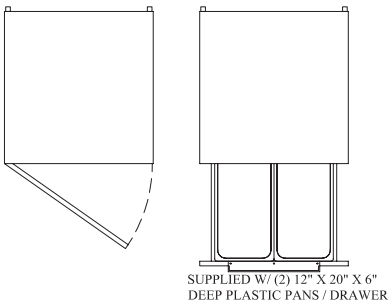
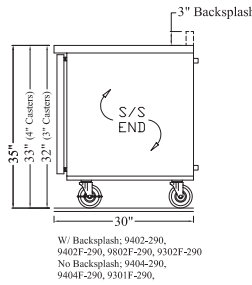
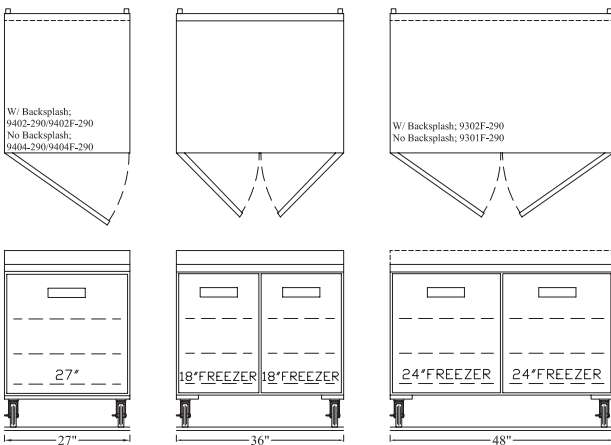
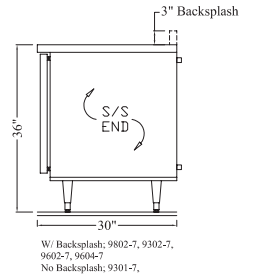
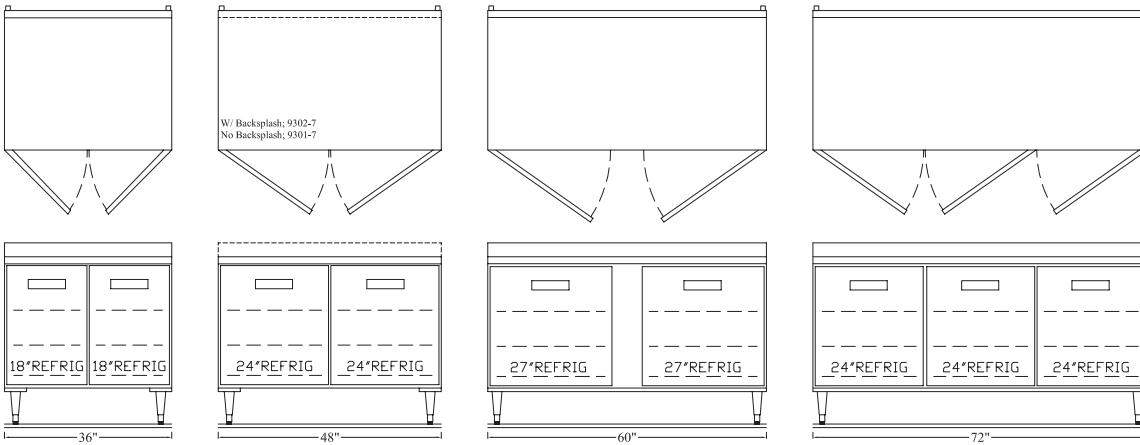


OPTIONS/ACCESSORIES:

- Stainless steel backs
- Overshelves (single & double tier)
- Add / remove backsplash
- Casters

Refrigerators or 27” Freezers:

- Drawers





Model	L	D*	H	Doors	Storage Cu. Ft.	HP	Volt	Amps	NEMA	Ship Wt.
REFRIGERATOR MODELS										
9404-290 / 9402-290	27"	30"	35"	(1) 27"	5.7	1/4	115/60/1	2.4	5-15P	185
9404-32-290	32"	32.75"	36"	(1) 32"	8.6	1/4	115/60/1	2.4	5-15P	252
9404-32D-290	32"	32.75"	36"	(2) Drawers	8.6	1/4	115/60/1	2.4	5-15P	252
9802-7	36"	30"	36"	(2) 18"	7.9	1/4	115/60/1	5.5	5-15P	220
9301-7/9302-7	48"	30"	36"	(2) 24"	10.8	1/4	115/60/1	5.5	5-15P	265
9602-7	60	30"	36"	(2) 27"	13	1/4	115/60/1	5.5	5-15P	300
9604-7	72	30"	36"	(3) 24"	16.8	1/4	115/60/1	5.5	5-15P	330
FREEZER MODELS										
9404F-290 / 9402F-290	27"	30"	35"	(1) 27"	5.7	1/4	115/60/1	2.2	5-15P	185
9404F-32-290	32"	32.75"	36"	(1) 32"	8.6	1/3	115/60/1	2.6	5-15P	252
9802F-290	36"	30"	35"	(2) 18"	7.9	1/3	115/60/1	2.6	5-15P	220
9301F-290 / 9302F-290	48"	30"	35"	(2) 24"	10.8	1/3	115/60/1	2.6	5-15P	265

*All units have 1" rubber bumpers at rear, not included in above depth