



OPERATOR MANUAL

IMPORTANT INFORMATION, KEEP FOR OPERATOR

888-994-7636, fax 888-864-7636
unifiedbrands.net



THIS MANUAL MUST BE RETAINED FOR FUTURE REFERENCE. READ, UNDERSTAND AND FOLLOW THE INSTRUCTIONS AND WARNINGS CONTAINED IN THIS MANUAL.

NOTIFY CARRIER OF DAMAGE AT ONCE It is the responsibility of the consignee to inspect the container upon receipt of same and to determine the possibility of any damage, including concealed damage. Unified Brands suggests that if you are suspicious of damage to make a notation on the delivery receipt. It will be the responsibility of the consignee to file a claim with the carrier. We recommend that you do so at once.

Manufacture Service/Questions 888-994-7636.

This manual provides information for:

POWER SOAK MODEL PCD-2 CHEMICAL DISPENSER



IMPORTANT - READ FIRST - IMPORTANT



WARNING! Please read these warnings carefully and follow all applicable local codes and regulations.

TO AVOID SERIOUS PERSONAL INJURY AND PROPERTY DAMAGE:

Wear protective clothing and eyewear when dispensing chemicals or other materials, when working in the vicinity of chemicals, and when filling or emptying equipment.

Always read and follow all safety instructions in safety data sheets (SDS) for all chemicals.

Observe all safety and handling instructions of chemical manufacturer.

Dilute and dispense chemicals in accordance with chemical manufacturer's instructions.

Direct discharge away from you and other persons and into approved containers.

Regularly inspect equipment and keep equipment clean and properly maintained.

Install using a qualified technician only, in accordance with all applicable electrical and plumbing codes.

Disconnect all power to dispenser during installation, service, and/or any time dispenser cabinet is opened.

Keep equipment clean to maintain proper operation.

Attach only to water tap outlets (25 PSI Minimum, 85 PSI Maximum and Maximum water temperature 120°F).

Never mix incompatible chemicals that pose hazards.

Note: If the unit is used to fill a sink, or the discharge hose can be placed into a sink. The unit must be mounted so that the bottom of the cabinet is above the overflow rim of the sink.

EQUIPMENT DESCRIPTION

PACKAGE CONTENTS

1. Power Soak PSD-2 Dispenser
2. Tube Guide Kit (P/N HYD13-03275-02)
3. 20 ft of 1/4 in I.D. Polyethylene Tubing (P/N HYD90095361)

Electrical 24 VAC at 50-60 Hz up to 2.0 Amps maximum

Cabinet Material ABS

Environmental Pollution: Degree 2, Temperature: 50°-120° F (10°-49° C), Maximum Humidity: 95% Relative

Weight 6 lbs. (2.7 kg)

Dimensions 6.0 in (15.2 cm) Wide x 10.75 in (27 cm) High x 4.9 in (12.4 cm) Depth

MODEL	# OF PRODUCTS	FLOW RATE	DETERGENT/ SANITIZER TUBE MATERIAL	FITTING
PCD-2	2	5.25 oz/min	EPDM	1/4 in Compression



INSTALLATION

SITE SURVEY AND INSTALLATION REQUIREMENTS

- Unit is to be installed by a trained technician; all local and national electrical and water regulations are to be observed
- Unit must not be installed near areas that suffer excess temperature changes, direct sunlight, frost or moisture of any kind
- Area must be free of high levels of electrical noise
- Ensure the unit can be mounted in an accessible position underneath the Power Soak Sink
- The unit location should be well lit for any maintenance and free of high levels of dust / air particulates
- Unit location should be well lit for any maintenance, and should be free of high levels of dust particulates
- Scheduled maintenance should be carried out on the dispenser at least once per year

Standard mounting of Power Soak PSD-2 Dispenser will be to the underside of the drain board at the factory.

ELECTRICAL INSTALLATION

The PCD-2 is powered from the Power Soak Controller.

Locate the 4-pin female connector from the Power Soak controller, insert it through the dispenser mounting bracket and into the rear of the PCD-2. Hand-tighten the locking nut on the connector. When ready, turn on the dispenser using the switch on the lower left side of the unit.

INSTALLING THE DISPENSER ONTO THE MOUNTING BRACKET

Simply hang the dispenser onto the mounting bracket using the molded-in feature on the back of the dispenser.

INSTALL DETERGENT AND SANITIZER DISCHARGE TUBES

The unit comes with two EPDM squeeze tubes, with 1/4 in compression fittings pre-installed. If the tubes need to be serviced, please refer to the maintenance procedure in the maintenance section of this manual.

OPERATION

The Power Soak PCD-2 is a peristaltic-based warewash chemical dispenser. It is powered and triggered to dispense precise volumes of detergent and sanitizer using the Power Soak Controller. This manual contains instructions for installing, operating and troubleshooting the dispenser.

NOTE: The PCD-2 is intended for use in industrial applications. It is not suitable for domestic use, and it must not be used outside of its intended use. The product must only be used for commercial kitchen operations. The manufacturer waives any responsibility arising from incorrect usage or transportation.





PROGRAMMING

Description of Controls



The PCD-2 makes use of only four buttons and a 3-digit LED display for all dispenser operation and programming.

Use the menu screen illustrations as a guide when learning to program the PCD-2. Use the Scroll key to move to all available main menu screens in Program mode.

-  **Next Key:** Press the Next key to move to the next menu or task in the User or Configuration settings menus.
-  **Scroll Key:** Press the Scroll key to change a unit value in the Configuration settings.
-  **Enter Key:** Press the Enter key to display the value for a menu setting, or to accept a value or edit in the menus.
-  **Home Key:** Press the Home key to back out of all menus and return to the idle home screen.

Display Indicators / Home Screen

In User Mode, the dispenser's operating status is indicated in the following displays (combinations of these displays occur during normal operation):

- The Home Screen nominal mode (no active displays):
- Center digit will always display a dash “-”
- Left digit will be blank unless detergent pump is active
- When detergent signal is active the left digit will display a decimal point
- When detergent pump is active the left digit displays a large rotating circle animation
- Right digit will be blank unless sanitizer pump is active
- When sanitizer signal is active the right digit will display a decimal point
- When sanitizer pump is active the right digit displays a large rotating circle animation

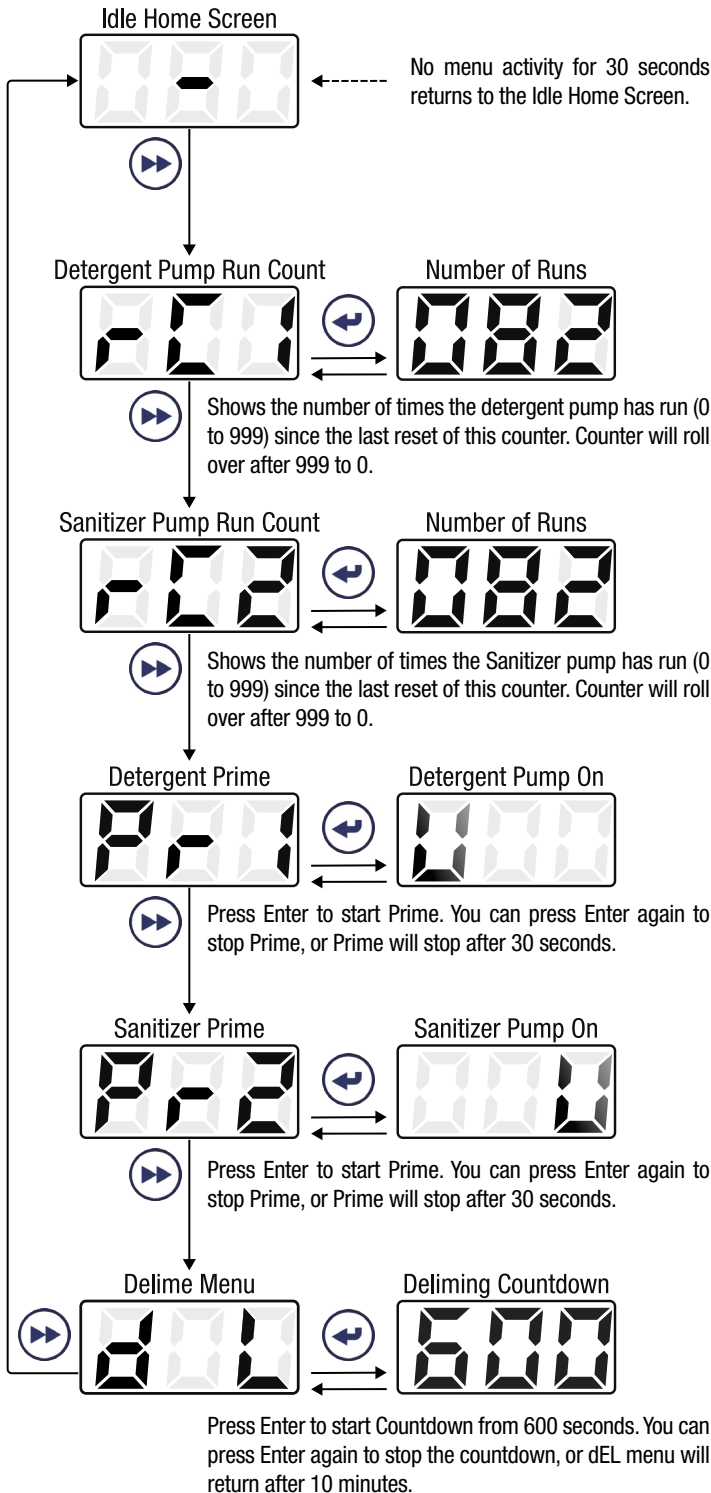
User Menus

At the idle Home screen display, an operator can simply press the Next key to access and move through the User Menus.

No password is required to access the User menus.

The circular menu loop allows the operator to view and return to all screens.

After 30 seconds of inactivity, the display will automatically return to the idle Home screen.



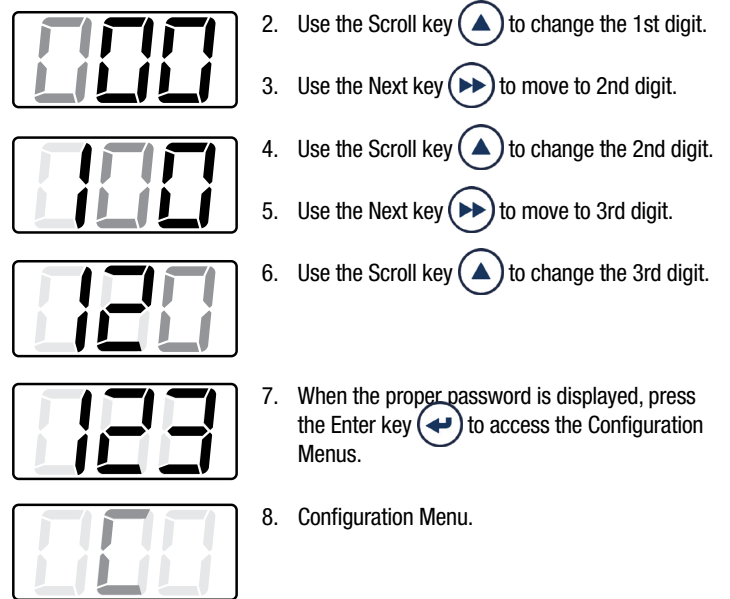
Deliming Countdown: The controller/dispenser does not do anything during the 10 minute countdown, it simply ignores detergent and rinse signals to avoid wastefully dosing detergent and sanitizer while the operator is performing maintenance.

Configuration Menu Access

The Configuration Menu is password protected (factory set to “123”) with a circular loop of menus for installers and maintenance technicians to adjust the unit settings to meet their requirements.

1. Press and hold the Enter key (left arrow) for 2 seconds to access the password screen explained below.

NOTE: Gray indicates blinking in displays.



Once you have enter the correct password, and are in the Configuration Menu, you will see a flashing “C”, as shown above.

Press the Next key (right arrow) to move through the circular menu loop using the controls as described in the previous User Menu section.

NOTE: Like the User Menu, the Configuration Menu will return to the idle Home screen after 30 seconds of inactivity.

MAINTENANCE

WARNING: BEFORE YOU PERFORM ANY MAINTENANCE, DISCONNECT THE INCOMING POWER SOURCE!

PREPARATION

Loosen the locking nut and disconnect the 4-pin connector from the rear of the PCD-2 dispenser.

ROUTINE MAINTENANCE

Routine maintenance on the PCD-2 unit includes:

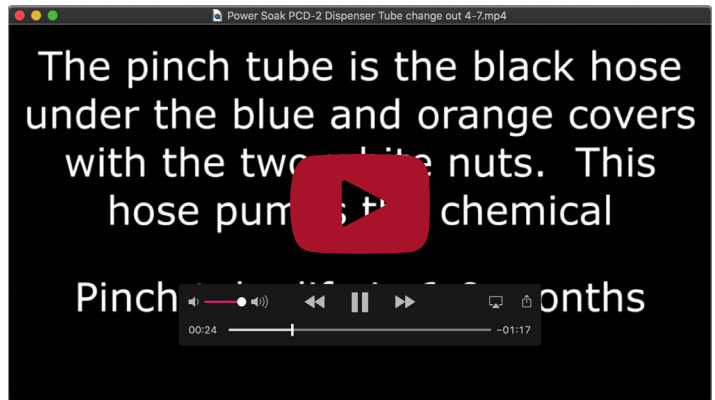
- Replacing pump squeeze tubes
- Keeping the unit clean

Repairs to the unit involves modular component replacement. This minimizes spare parts inventory requirements and speeds up the service process in the field.

Every Maintenance Visit

- Clean the unit cabinet with a damp cloth
- Check the pump tube's condition and replace, if needed

PUMP TUBE REPLACEMENT



View this video online at <https://youtu.be/V4ehrENExEQ>, or if you're viewing this as a PDF, click on the link above.

Replace pump tubes at regular maintenance intervals, well before the tube fails and ruptures. If the tube does rupture, clean all product from the pump housing with a damp cloth.

- Loosen the pump front captive screw and remove the pump cover
- Remove the old tube with compression fittings
- Install the new tube with compression fittings
- Insert new tube from left side of pump, with pump spinner oriented in an 11/1 o'clock position
- Turn the spinner clockwise, using a screwdriver, as you press the pump tube in place

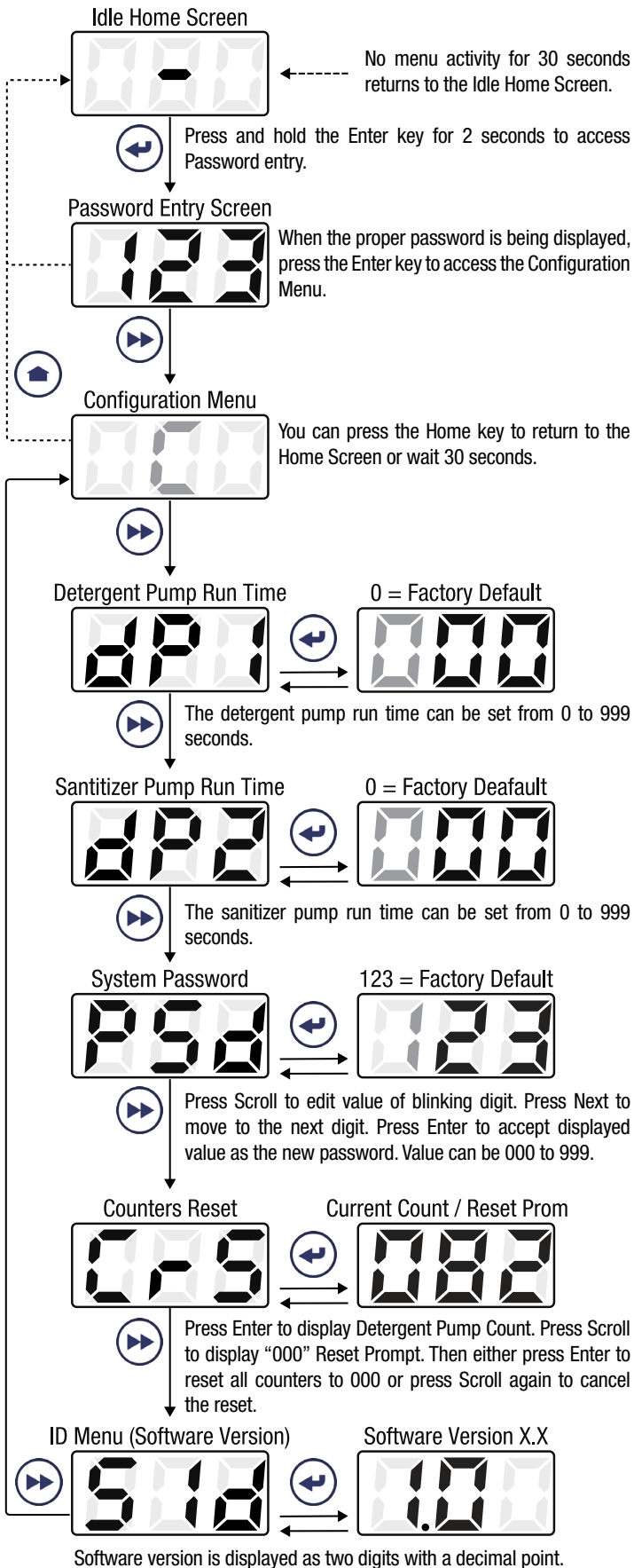
CABINET FRONT REMOVAL

PCD-2 service parts consist of two major assemblies: pump parts and tubes::

- Cabinet Front—includes printed circuit board, cabinet front, cables, and pump motors
- Cabinet Rear—includes 4-pin connector and wiring harness

To Remove the Front Cabinet:

1. Remove the unit from the mounting bracket and place on a workbench
2. Loosen the front Phillips head screw
3. Remove c-clips from the hinge pins



CIRCUIT BOARD REPLACEMENT

1. Loosen the 7 screws on the board-side of the white terminal block
2. Remove the white jumper in the upper-left hand corner of the circuit board and retain this jumper for the new board
3. Disconnect the two motor connectors
4. Remove the 4 mounting screws that hold the board in place
5. Replace the printed circuit board and screw into place with the 4 mounting screws
6. Reattach the motors and the white jumper
7. Reattach the 7 wires to the white terminal block and tighten all the screws

PUMP MOTOR REPLACEMENT

1. To gain access to the motor, one must disassemble the peristaltic from the front
2. Start by loosening the pump cover thumb screw and removing the pump cover
3. Gently remove the squeeze tube starting on the left side and using a screwdriver to rotate the spinner
4. Pull the spinner off the shaft to remove it
5. Remove the 4 screws from inside the pump race
6. Open the cabinet housing and disconnect the pump wiring connector from the main circuit board
7. Carefully, remove the motor
8. Replace the motor and reconnect the wiring harness
9. Reattach the 4 screws from inside the pump race
10. Reattach the pump spinner
11. Reinsert the pump squeeze tube following the steps in the previous section
12. Reattach the pump cover and thumb screw

REPLACEMENT PARTS

To order parts, contact your Authorized Service Agent. Supply the model designation, serial number, part description, part number, quantity, and when applicable, voltage and phase.

CONTACT US

If you have questions pertaining to the content in this manual, contact Unified Brands at 888-994-7636 or tsrandell@unifiedbrands.net.

TROUBLESHOOTING

This unit is designed to operate smoothly and efficiently if properly maintained. However, the following is a list of checks to make in the event of a problem. When in doubt, turn unit off and contact service at 888-994-7636 or tsrandell@unifiedbrands.net.

SYMPTOM	POSSIBLE CAUSE	PROCEDURE
Dead Unit	Blown fuse	Replace fuse
	Damaged/Broken PCB	Replace PCB
	Loose wire connections	Check to be sure all wires are properly fastened internally
No Chemical Dispense	Broken/Damaged pump tube	Remove cover and replace tubing with Tube Kit
	Broken/Damaged pump motor	Replace pump motor
	Loose wire connections	Check to be sure all wires are properly fastened internally

WARRANTY

Congratulations on the purchase of your new Unified Brands equipment. We hope you enjoy many years of reliable service in connection with the same. Please review all of the important safety and operational information contained in the Operator's Manual for this equipment before it is placed in service. If you have any questions related to equipment set up, operations, or service, please call 888-994-7636.

In addition, please review the sales terms and conditions set forth below.

*****IMPORTANT NOTICE*****

WARRANTIES, LIMITATIONS ON WARRANTIES, AND LIMITATION OF REMEDIES

The following Warranties, Limitation on Warranties, and Limitation of Remedies are included in the terms of sale for this product. Please read this entire warranty and all warranty modifications, disclaimers, and limitations of remedies set forth herein before accepting or using this equipment or product. Customer acknowledges and accepts the provisions of this notice by Customer's acceptance and use of the product. If these provisions are not acceptable and agreed to by Customer, then please return this product in its unused condition to Unified Brands or a Unified Brands authorized dealer.

UNIFIED BRANDS warrants this product against defects in material and workmanship under normal use and services for which this product was designed. This warranty runs only to the original end user and is in lieu of any other liability for defects. THE WARRANTIES EXPRESSED IN THESE TERMS AND CONDITIONS ARE IN PLACE OF ANY AND ALL OTHER EXPRESS WARRANTIES (UNLESS SEPARATELY STATED IN PRINTED MATERIAL PREPARED BY US DESCRIBING OUR EQUIPMENT) AND EXCLUDE ALL IMPLIED WARRANTIES, INCLUDING, BUT NOT LIMITED TO, ANY WARRANTY OF MERCHANTABILITY OR FITNESS FOR ANY PARTICULAR PURPOSE; NOR ARE THERE ANY OTHER WARRANTIES, EXPRESS OR IMPLIED, BY OPERATION OF LAW OR OTHERWISE. In no event shall UNIFIED BRANDS be liable for damages or delay or for any consequential, special or contingent damages arising out of any breach of our warranty, whether or not we have knowledge of specific needs or our employees or agents have given any specific assurances. Anyone claiming that there has been a breach of warranty by UNIFIED BRANDS must give us written notice within THIRTY (30) days after discovery of the relevant defect or the right to assert such claim will have been waived conclusively and provided further that any such claim must also be asserted within the general warranty period for such equipment and/or parts.

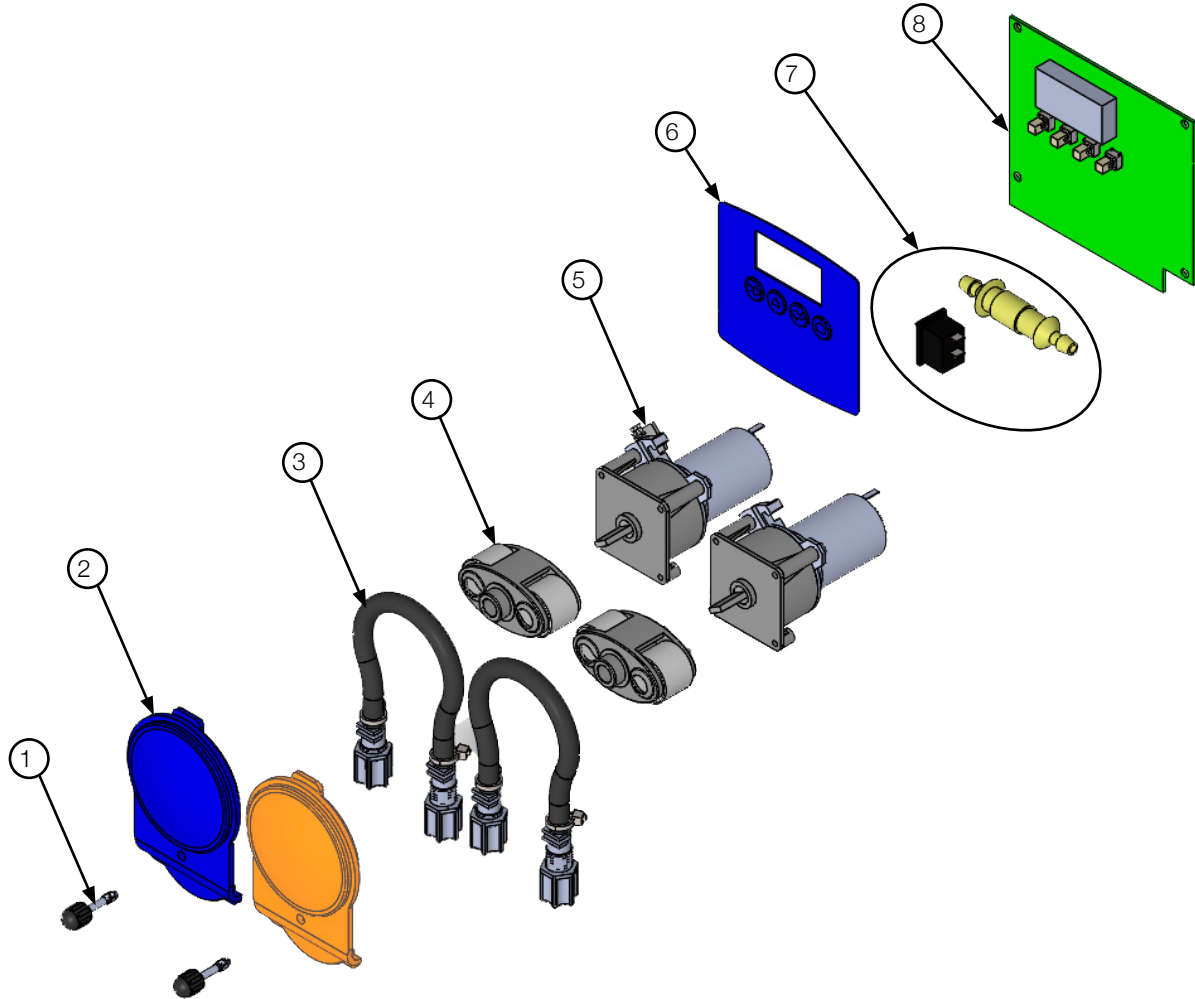
UNIFIED BRANDS will not be liable for any expense incurred without our prior written authorization for alterations made outside of our factory or for repairs which are not performed by UNIFIED BRANDS authorized service departments using UNIFIED BRANDS factory parts. Nor shall we be responsible for the performance of equipment as to which any repairs, revisions or alterations have been made by others.

THE EXCLUSIVE REMEDY OF THE USER OR BUYER AND THE EXCLUSIVE LIABILITY OF UNIFIED BRANDS OR ANY SELLER OF UNIFIED BRANDS PRODUCTS, FOR ANY AND ALL CLAIMS, LOSSES, INJURIES, OR DAMAGES (INCLUDING CLAIMS BASED ON BREACH OF WARRANTY, CONTRACT, NEGLIGENCE, TORT, STRICT LIABILITY, OR OTHERWISE) RESULTING FROM OR ARISING OUT OF THE USE OF HANDLING OF THIS PRODUCT, SHALL BE THE RETURN OF THE PURCHASE PRICE OR AN AMOUNT NOT TO EXCEED THE ORIGINAL PURCHASE PRICE OF THE PRODUCT OR, AT THE ELECTION OF UNIFIED BRANDS OR THE SELLER, THE REPLACEMENT OF THE PRODUCT.



[https://unifiedbrands.net/
Power-Soak-Warranty-Information](https://unifiedbrands.net/Power-Soak-Warranty-Information)

Parts List



ITEM	DESCRIPTION	PART #
1	KIT, SCREW, COVER, CAPTIVE, HYBRID, #8-32 X 3/4 IN (10 PACK)	47885
2	KIT, COVER, POWER SOAK PUMP, BLUE	47886
2	KIT, COVER, POWER SOAK PUMP, ORANGE	47787
3	KIT, PUMP TUBE, RINSE/DETERGENT, EPDM (INCLUDES 1/4" BARB FITTINGS) (10 PACK)	47887
4	KIT, PUMP SPINNER, STAINLESS-STEEL SHAFT, ~12 LB SPRING	47888
5	KIT, MOTOR, DETERGENT, WITH EMC FILTER	47889
6	GRAPHIC OVERLAY, POWER SOAK	47791
7	SWITCH ASSEMBLY, ON-OFF, CE WITH FUSE (250V 1A)	47792
8	PCB, ASSEMBLY, POWER SOAK FIRMWARE	47793

