



CUSTOM

ADD ON UNITS MODEL 90000

Add on units with 16 gauge reinforced tops, and integral backsplash with 45° return. 6" high adjustable legs.

PROJECT NAME:

LOCATION:

ITEM NO:

QTY:

MODEL NO:

AIA NO:

SIS NO:

CSI SECTION: 11400

AVAILABLE MODELS:

- 91327
- 92333
- 93324
- 93346
- 93368
- 94328
- 98324

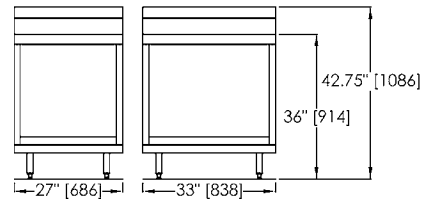
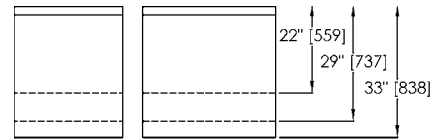
STANDARD FEATURES:

- Available under one piece top with other modular units up to 16' in length
- 6" high legs—adjustable and movable
- 45° integral stainless backsplash providing access to electrical chase is standard. 90° stainless backsplash is optional.

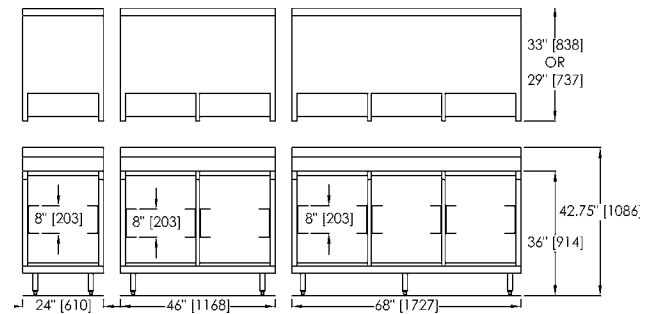
SPECIFICATIONS: Tops to be one piece of die formed 16 gauge stainless steel with 2 1/2" nosing. Backsplash to be covered cornered, with 45° return at top and overall height of 6 3/4". Ends at top fitted with recessed heavy duty steel bars for field bolting units together, producing a hairline seam. Body ends to be corrosion resistant steel. Legs to be 6" high stainless steel with adjustable bullet foot. Legs mounted to full length channel frame assembly which is integrally welded to bottom of body assembly. Legs can be moved left to right to avoid floor obstacles during installation.

ORIGIN OF MANUFACTURE: Designed and manufactured in the United States.

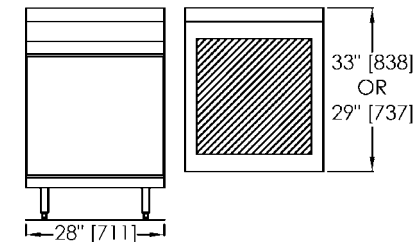
91000 Series & 92000 Series
Units with 16 gauge reinforced stainless steel top. To enclose built-in food warmer. Warmer supplied by others, installed by Randell. On 6" high adjustable and movable legs.- unfinished ends.



93000 Series
Unit with 16 gauge reinforced stainless steel top. To hold glass or cup racks. 6" or 8" spacing of angles. Full, partial or no top cut back to be provided, as specified. On 6" high adjustable and moveable legs - unfinished ends.



94000 Series
Unit with 16 gauge reinforced stainless steel top, backsplash with accessible electrical chase to house drop-in dispensers. Dispensers supplied by others. On 6" high adjustable and movable legs.- unfinished ends.



98000 Series
Unit with 16 gauge reinforced stainless steel top, backsplash with accessible electrical chase, water glass filler and trough, and 60 Lb. ice chest. Stainless steel front panels. On 6" high adjustable legs.- unfinished ends.

