



Table Top Kettles model T5C

Description

Unit shall consist of . . . (Specify Model, Size & Quantity) steam jacketed kettle(s) mounted on a . . . (Specify table width in inches) T5C Table, per bulletin 141043 and as follows:

Construction

Table shall be constructed of stainless steel with solid one piece welded construction. Table top to have raised marine edges and a 5" wide by 4" deep drain trough running the width of the table, complete with drain fitting and strainer.

Support legs are heavy 2" round tubular stainless steel with adjustable bullet feet. Table top work height ideal for operator convenience and efficiency.

Finish

All table and dump tray surfaces polished to a uniform #3 finish to insure maximum ease in cleaning.

Sanitation

Table shall have easy to clean open leg design and meet known health department and sanitation codes, and be NSF listed.

Dump Tray

Sliding dump tray is designed to assist in pouring kettle contents into pans or pots. Splashes or drips are diverted into the drain trough to eliminate spilling or splashing on floors etc. Dump tray lifts out for easy cleanup and rolls along length of drain trough on nylon rollers, to serve all kettles mounted.

Controls

Front mounted steam control valves provided for each direct steam kettle mounted. All necessary traps, piping and valves furnished and prepped for single point utility connection, when direct steam kettles are mounted.

Water Fill Faucet

Table comes standard with double pantry faucet for each two kettles mounted. Front mounted hot and cold faucet valves and swing spouts simplify kettle filling and cleaning.

Installation

T5C table with direct steam kettles require single stream, hot & cold water and drain connections. See kettle specifications sheet for self-contained kettle electric and/or gas installation requirements.

Options

Wall mounting is available (Specify Model MWT5C).

Origin of Manufacture

Equipment table made in the United States.

T5C shown with two TDC/2-20 kettles



Stainless Steel Equipment Table

For Mounting Table Top Steam Jacketed Kettles

Short Form

Unit shall be . . . (Specify Model, Size & Quantity) Steam jacketed kettle(s) mounted on a . . . (Specify table width) T5C Table per Bulletin 141043. Kettle mounting table shall be all stainless steel with convenient work height and 5" wide drain trough with removable sliding dump tray. Front mounted individual steam control valves provided with direct steam kettles and hot & cold water controls standard. Swing faucet positioned to fill one or two kettles as needed. NSF listed. Single point stream, hot & cold water and drain connections required. Made in USA.

Applications

Provide convenient and proper operator / kettle work height.

Provide easy to clean work station with built-in pouring sink, fill faucet and kettle controls.

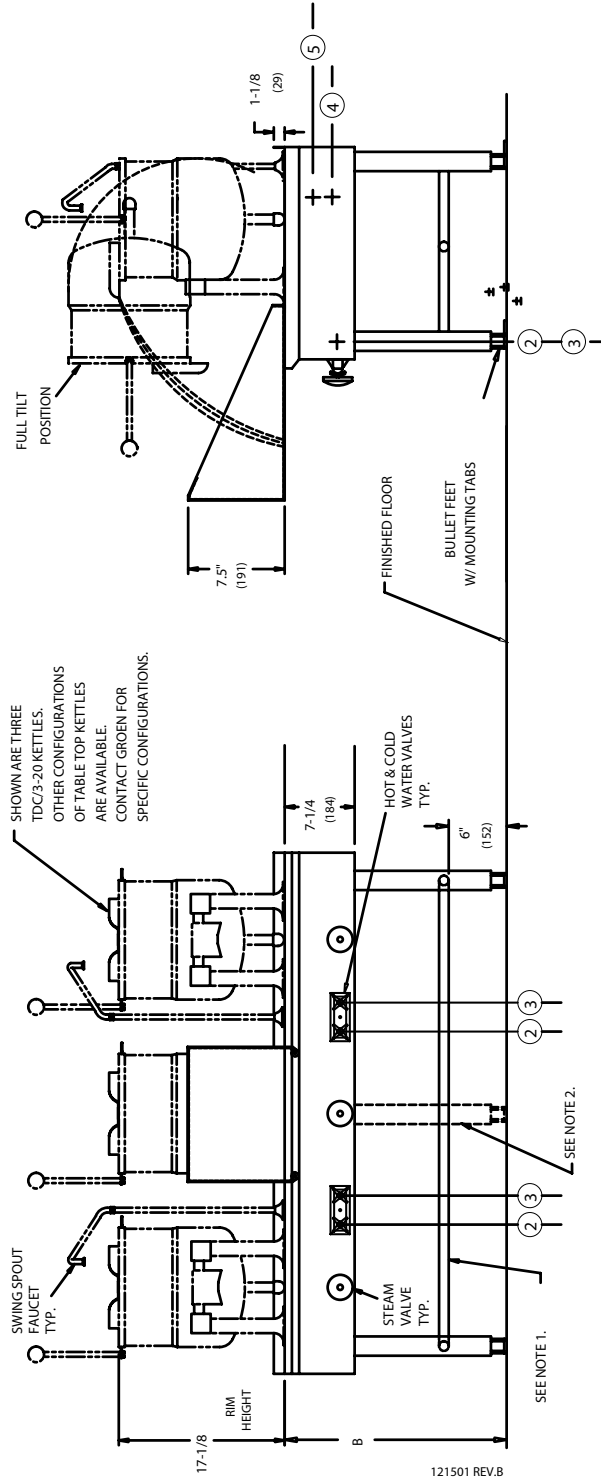
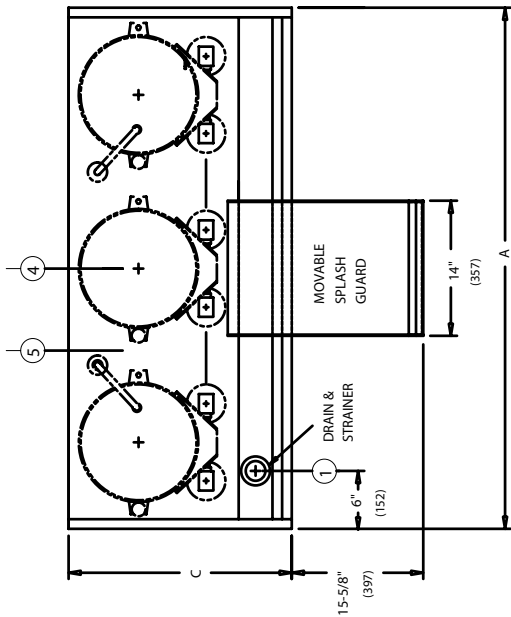
NUMBER / SIZE OF KETTLES TO BE MOUNTED	TABLE DIMENSIONS					
	LENGTH		DEPTH		HEIGHT	
	IN.	MM	IN.	MM	IN.	MM
(1) TDC/3-10 OR 20	20	508	23	508	29	737
(1) TDA/1-40	30	762	25	584	23	584
(2) TDC/3-10'S	40	1016	23	508	29	737
(2) TDA/1-40'S	40	1016	23	508	29	737
(3) TDC/3-10'S	63	1600	25	584	23	584
(3) TDA/1-40'S	63	1600	23	508	29	737
(3) TDC/3-20'S	63	1600	23	508	29	737
(3) TDA/1-40'S	90	2286	25	584	23	584
(1) TDC/3-20 & (1) TDA/1-40	48	1219	25	584	23	584
(2) TDC/3-20'S & (1) TDA/1-40	66	1676	23	508	23	584

SERVICE CONNECTIONS FOR KETTLES:

- ① DRAIN FOR SINK: 1-1/2" IPS
- ② COLD WATER SUPPLY: 3/8" NPT (FOR FAUCET)
- ③ HOT WATER SUPPLY: 3/8" NPT (FOR FAUCET)
- ④ DRAIN CONDENSATE: 1/2" NPT
- ⑤ STEAM IN FROM POWER SOURCE: 1/2" NPT

NOTES:

1. T-BRACE REQ'D ON ALL TABLES 60" AND LONGER.
2. 6 LEGS REQ'D ON 70" LONG TABLES AND LONGER.
3. TABLE SIZE VARIES WITH TYPE AND NUMBER OF KETTLES.
4. DIMENSIONS IN BRACKETS () ARE MM.



121501 REV.B

