



CONVEYORS

BUS TRAC™ CONVEYOR SYSTEM MODEL BT

The Avtec Bus Trac™ is a soiled tray accumulator, utilizing vertical accumulation of soiled trays to form a “buffer” between the dining area and patrons returning trays and the dish room and scrapping personnel. The system consists of a series of rotating tray carrier baskets, either three, four or five tier high. The unit is available in any number of lengths, depending on the sizing requirements

SHORT FORM SPEC: Avtec Bus Trac tray accumulator systems are designed to maximize the capacity for soiled trays and plates while minimizing the space needed. Can achieve up to 5 times the capacity as standard flat conveyors and drop off windows in the same space. Tiered shelves are made to fit into a standard dish machine for cleaning, and be held in place by gravity to not require the use of tools to remove or hang shelves in place. Requires 120v 20amp service.

STANDARD FEATURES:

- Chain link drive system with removable carriers—no belt service headaches
- Removable tray carriers—easily cleaned in any commercial conveyor dish machine
- Removable tray insert on bottom tier to accommodate patrons without trays
- Vertical accumulation offers 3-5 times the accumulation of soiled tray in the same space as standard tray return conveyors
- Infrared, polarized retro-reflective beam type limit switch, self contained and fully gasketed with stainless steel mounting brackets

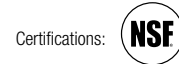
SPECIFICATIONS: Provide AVTEC NSF approved Bus Trac™ Soiled Tray Return System, Model BT. System designed to be mounted on stainless steel legs, pedestal base or wall. Overall size shall be (56”) wide x long, (minimum length 9’-0”), with tray holding capacity. Main housing shall be 18” wide x long. (minimum length 5’-10”).

System shall consist of a series of rotating removable tray carriers, with inserts, hangers and UHMW self-lubricating glides cantilevered from a 1/8” steel track, attached to a concealed closed-path drive system. Unit to have removable stainless steel side panels for access to drive components.

Main frame to be constructed of stainless steel structural channel, with 16 gauge, 300 series stainless steel enclosure and 18 gauge, removable access panels.

Tray carriers shall be (3) (4) (5) tier with buff colored molded ABS plastic insert on bottom tier, and shall be easily removable, without tools, and shall be capable of being cleaned in any conveyor style dish machine. Carriers shall be constructed of 1/4” electro-polished stainless steel wire; hangers shall be constructed of 3/8” stainless steel wire, with spacer wheel at bottom. Drive system shall consist of 3/4 HP drive motor, drive chain, axle and sprockets powering a steel conveyor chain rotating in a concealed, milled UHMW inner channel and attached to individual tray carrier hangers with Chain tabs and UHMW glides. Provide 2” chain take-up, sprocket adjustment and 3% chain stretch allowance utilizing special offset links.

Motor to be (3/4) (1) HP, 120 VDC, with variable speed drive and permanently lubricated bearings. Provide gasketed stainless steel control panel, (10” x 15” x 6”) with SCR solid state control and infinite speed dial and hour meter.



PROJECT NAME:	
LOCATION:	
ITEM NO:	
QTY:	
MODEL NO:	
AIA NO:	
SIS NO:	
CSI SECTION:	11400



Model BT shown

OPTIONS/ACCESSORIES:

If section headers are needed:

Half-round clear plastic insignia mounted at top of hanger, printed with logo or motto (Provide copy of logo or motto)

Full base 13 1/2 “ x _____, stainless steel

_____Additional buff colored ABS molded plastic tray carrier inserts.

_____Additional remote stop start switch(es) in stainless steel housing

Custom fabricated front drop table, 14 gauge, #300 series stainless steel, per drawings

continued page 2

ADDITIONAL RESOURCES:

[Request A Quote](#)

[Product Videos](#)

[Sales Tools](#)

[Find A Rep](#)

OVERALL LENGTH*	HOUSING LENGTH	OPTIONAL BASE LENGTH	NUMBER OF TRAY HANGERS	NUMBER OF TRAYS 2-TIER	NUMBER OF TRAYS 3-TIER	NUMBER OF TRAYS 4-TIER	NUMBER OF TRAYS 5-TIER
9'-0"	5'-10"	4'-2"	8	16	24	32	40
10'-6.5"	7'-4.5"	5'-8.5"	10	20	30	40	50
12'-1"	8'-11"	7'-3"	12	24	36	48	60
13'-7.5"	10'-5.5"	8'-9.5"	14	28	42	56	70
15'-2"	12'	10'-4"	16	32	48	64	80
16'-8.5"	13'-6.5"	11'-10.5"	18	36	54	72	90
18'-3"	15'-1"	13'-5"	20	40	60	80	100
19'-9.5"	16'-7.5"	14'-11.5"	22	44	66	88	110
21'-4"	18'-2"	16'-6"	24	48	72	96	120
22'-10.5"	19'-8.5"	18'-0.5"	26	52	78	104	130
24'-5"	21'-3"	19'-7"	28	56	84	112	140
25'-11.5"	22'-10"	20'-2"	30	60	90	120	150
27'-6"	24'-4.5"	22'-8.5"	32	64	96	128	160
30'-7"	27'-5.5"	25'-9.5"	36	72	108	144	180
33'-8"	30'-6.5"	28'-10.5"	40	80	120	160	200
36'-9"	33'-7.5"	31'-11.5"	44	88	132	176	220

* Recommended 5" each side for Tray Clearance - Contact Factory for custom Sizing

OPTIONS/ACCESSORIES continued:

Custom fabricated dish table, with

scrapping trough

silver saver

sliding bridges

pre-installed transition

hardware for (pulper)

(disposer) (Trayveyor)

(hardware supplied by KEC)

over shelf (wall) (table)

mounted per drawings

sink, size and shape per drawings

(removable) (mobile) bridges

Vacuum breaker cutouts in backsplash

Gravity Roller sections, recessed, per drawing

____ Mobile silver soak sink (s)

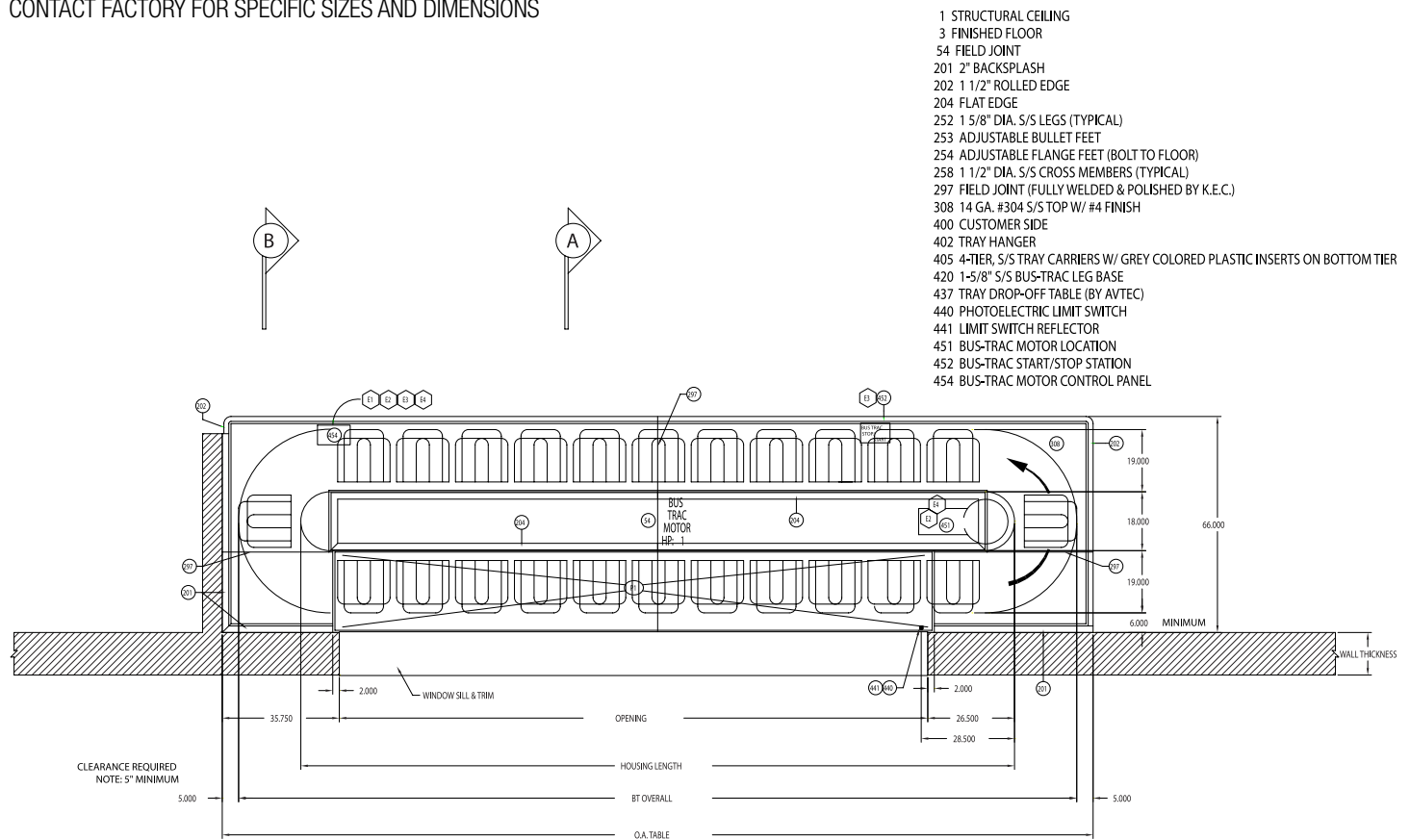
____ Mobile dish table bridge(s) with 14 gauge stainless steel tops, (and over shelf) for holding two 20" x 20" dish racks

Cafeteria side front enclosure panels to be clad with #____color plastic laminate manufactured by _____, or equal

Cafeteria side stainless steel base to be clad with #____color plastic laminate manufactured by _____, or equal

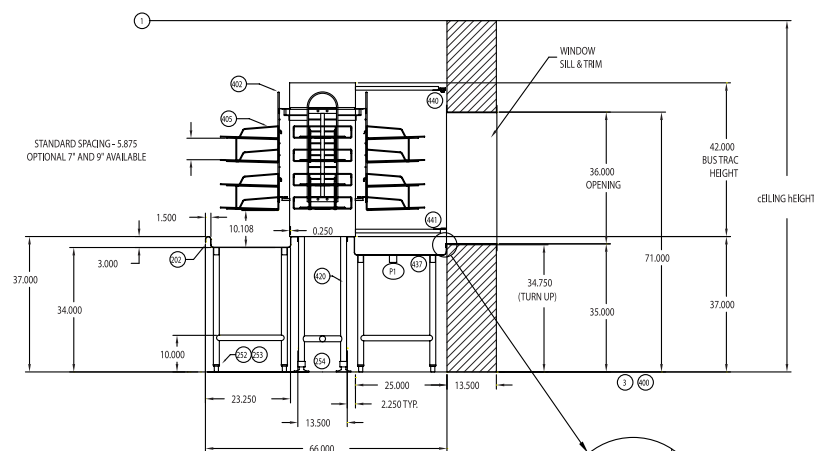
Molded plastic tray carrier inserts to be ABS color #____(white, black, red, or gray standard colors available at additional price—additional colors available in quantities of 100 or more at additional price) (twelve week delivery time required)

TYPICAL DRAWINGS: 4 TIER, 23 CARRIER SHOWN
CONTACT FACTORY FOR SPECIFIC SIZES AND DIMENSIONS



PLAN VIEW

ALL DIMENSIONS SHOWN ARE EQUIPMENT DIMENSIONS.
OVERALL EQUIPMENT DIMENSIONS ARE $\pm 1/4"$.
CONSTRUCT WALLS TO SUIT EQUIPMENT DIMENSIONS.



SECTION VIEW

ALL DIMENSIONS SHOWN ARE EQUIPMENT DIMENSIONS.
OVERALL EQUIPMENT DIMENSIONS ARE $\pm 1/4"$.

FOUR TIER BUS TRAC SHOWN. CONTACT FACTORY FOR ADDITIONAL INFORMATION AND SIZES