



CHINOOK VALUE VENTILATION

EXHAUST ONLY FILTER MODEL VDD

The Avtec Model VDD is an exhaust only wall mount canopy. The VDD is tested to UL Standard #710 for lower air volumes than required by national codes. The VDD model is listed for use over 400, 600 and 700°F commercial cooking appliances. Suitable for wall or light or medium duty island mount installations.

SHORT FORM SPEC: The Avtec Model VDD is an exhaust only wall mount canopy. The VDD is tested to UL Standard #710 for lower air volumes than required by national codes. The VDD model is listed for use over 400, 600 and 700°F commercial cooking appliances. Suitable for wall or light or medium duty island mount installations.

STANDARD FEATURES:

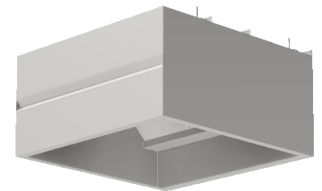
- #430 stainless steel construction on all exposed surfaces
- UL Listed baffle style aluminum grease filters
- UL Listed globe style light fixtures on 36" center lines
- 3" rear air space
- Concealed grease trough and removable grease cup(s)
- Fixed location hanger brackets
- Exhaust collar(s) installed
- Exhaust fan/cooking equipment interlock control

SPECIFICATIONS: This is a Commercial Kitchen Ventilation canopy of Type I construction. A single shell, exhaust only wall mount canopy constructed of stainless steel on all exposed surfaces and aluminized steel on all non-exposed surfaces. Canopy shall be constructed using the standing seam method for optimum strength and shall have all welded exterior joints and seams. Canopy construction shall conform to NFPA-96 standards. All exposed welds are to be ground smooth and polished to match finish requirements. Canopy is to meet NSF standards for construction and listed standards for operation. Grease trough is to be concealed and sloped to removable grease cup(s). UL Listed baffle type aluminum grease filters running the full length of canopy. UL Listed globe type incandescent light fixtures mounted on 36" center lines.

ORIGIN OF MANUFACTURE: Designed and manufactured in the United States.



PROJECT NAME:	
LOCATION:	
ITEM NO:	
QTY:	
MODEL NO:	
AIA NO:	
SIS NO:	
CSI SECTION:	11400



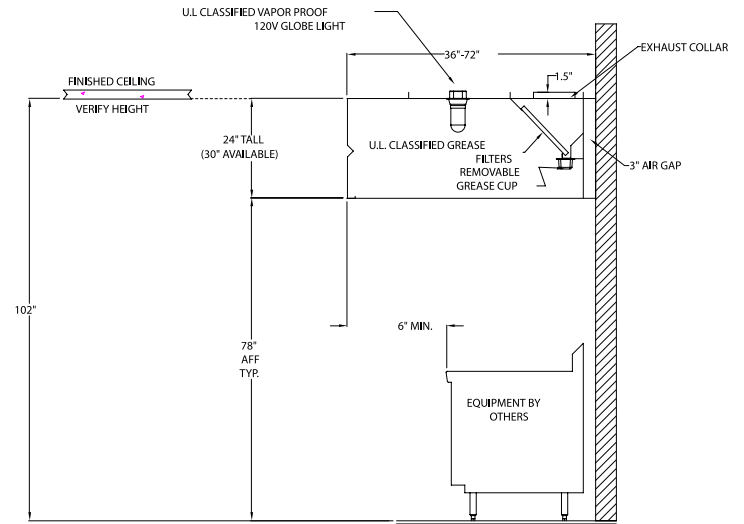
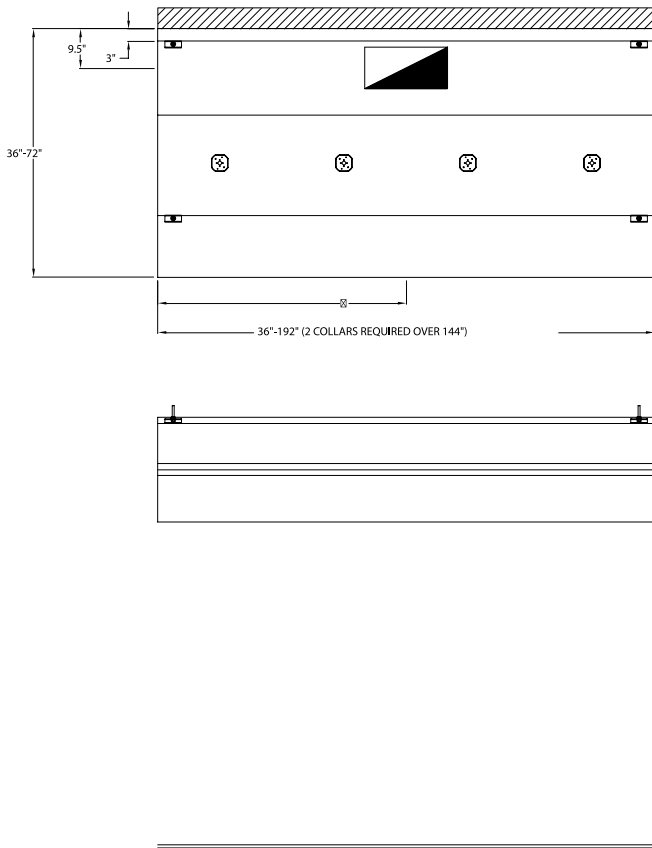
Model VDD shown

OPTIONS/ACCESSORIES:

- All 300 series stainless steel construction
- EcoAzur Energy Management System
- UL Listed exhaust volume damper
- Pre-plumbed fire suppression
- Insulated 3" air space
- Stainless steel top enclosure
- Stainless wall panel
- Exhaust fan/cooking equipment interlock
- Recessed LED lights
- Switch Panel

ADDITIONAL RESOURCES:

- [Request A Quote](#)
- [Product Videos](#)
- [Sales Tools](#)
- [Find A Rep](#)



Light Duty Temperature Cooking Equipment – 400°F (Light duty ranges, roasters, ovens, steamers, etc...)
Medium Duty Temperature Cooking Equipment – 400-600°F (Above plus rotisseries, ranges, grills, fryers, etc...)
Heavy Duty Temperature Cooking Equipment – 600°F (Above plus gas char-broilers, woks, upright broilers, etc...)
Extra-Heavy Temperature Cooking Equipment – 700°F (Above plus solid fuel broilers or chain broilers)

LENGTH	400 DEGREE LIGHT DUTY COOKING EQUIPMENT EXHAUST CFM		400-600 DEGREE MEDIUM DUTY COOKING EQUIPMENT EXHAUST CFM		600 DEGREE HEAVY DUTY COOKING EQUIPMENT EXHAUST CFM		700 DEGREE EXTRA-HEAVY DUTY COOKING EQUIPMENT EXHAUST CFM	
	CFM @ .625 SP	DUCT COLLAR	CFM @ .75 SP	DUCT COLLAR	CFM @ 1.00 SP	DUCT COLLAR	CFM @ 1.25 SP	DUCT COLLAR
4'-0"	1000	(1) 8 x 12	1200	(1) 8 x 14	1400	(1) 8 x 16	2100	(1) 8 x 24
5'-0"	1250	(1) 8 x 14	1500	(1) 8 x 16	1750	(1) 8 x 20	2625	(1) 10 x 24
6'-0"	1500	(1) 8 x 16	1800	(1) 8 x 20	2100	(1) 8 x 24	3150	(1) 10 x 28
7'-0"	1750	(1) 8 x 20	2100	(1) 8 x 24	2450	(1) 8 x 28	3675	(1) 12 x 28
8'-0"	2000	(1) 8 x 22	2400	(1) 8 x 28	2800	(1) 10 x 24	4200	(1) 12 x 32
9'-0"	2250	(1) 8 x 26	2700	(1) 10 x 24	3150	(1) 10 x 28	4725	(1) 12 x 35
10'-0"	2500	(1) 8 x 28	3000	(1) 10 x 28	3500	(1) 12 x 26	5250	(2) 12 x 20
11'-0"	2750	(1) 10 x 24	3300	(1) 12 x 24	3850	(1) 12 x 30	5775	(2) 12 x 22
12'-0"	3000	(1) 10 x 28	3600	(1) 12 x 28	4200	(1) 12 x 32	6300	(2) 12 x 24
13'-0"	3250	(2) 8 x 18	3900	(2) 8 x 22	4550	(2) 12 x 17	6825	(2) 12 x 26
14'-0"	3500	(2) 8 x 20	4200	(2) 8 x 24	4900	(2) 12 x 18	7350	(2) 12 x 28
15'-0"	3750	(2) 8 x 21	4500	(2) 10 x 20	5250	(2) 12 x 20	7850	(2) 12 x 29
16'-0"	4000	(2) 8 x 23	4800	(2) 10 x 22	5600	(2) 12 x 21	8400	(2) 12 x 32

For custom solutions or specific cook line operation, please contact factory.

