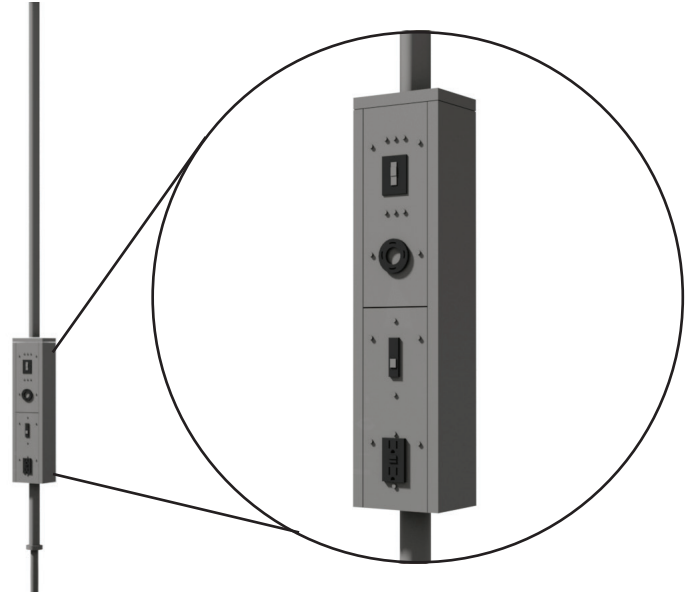


## Utility Raceways M Series model EPO

### Description:

The Electrapole is a Utility Distribution System comprised of a stainless steel sheet metal housing enclosing cable bus electrical system services that provide connections for individual appliances. UDS with only electrical services are listed by UL as multi-outlet assemblies. These systems are intended primarily for use where it is difficult to get access to electrical outlets. Individual point-of-use connection plates are located in the vertical housing of the unit.



### Specifications:

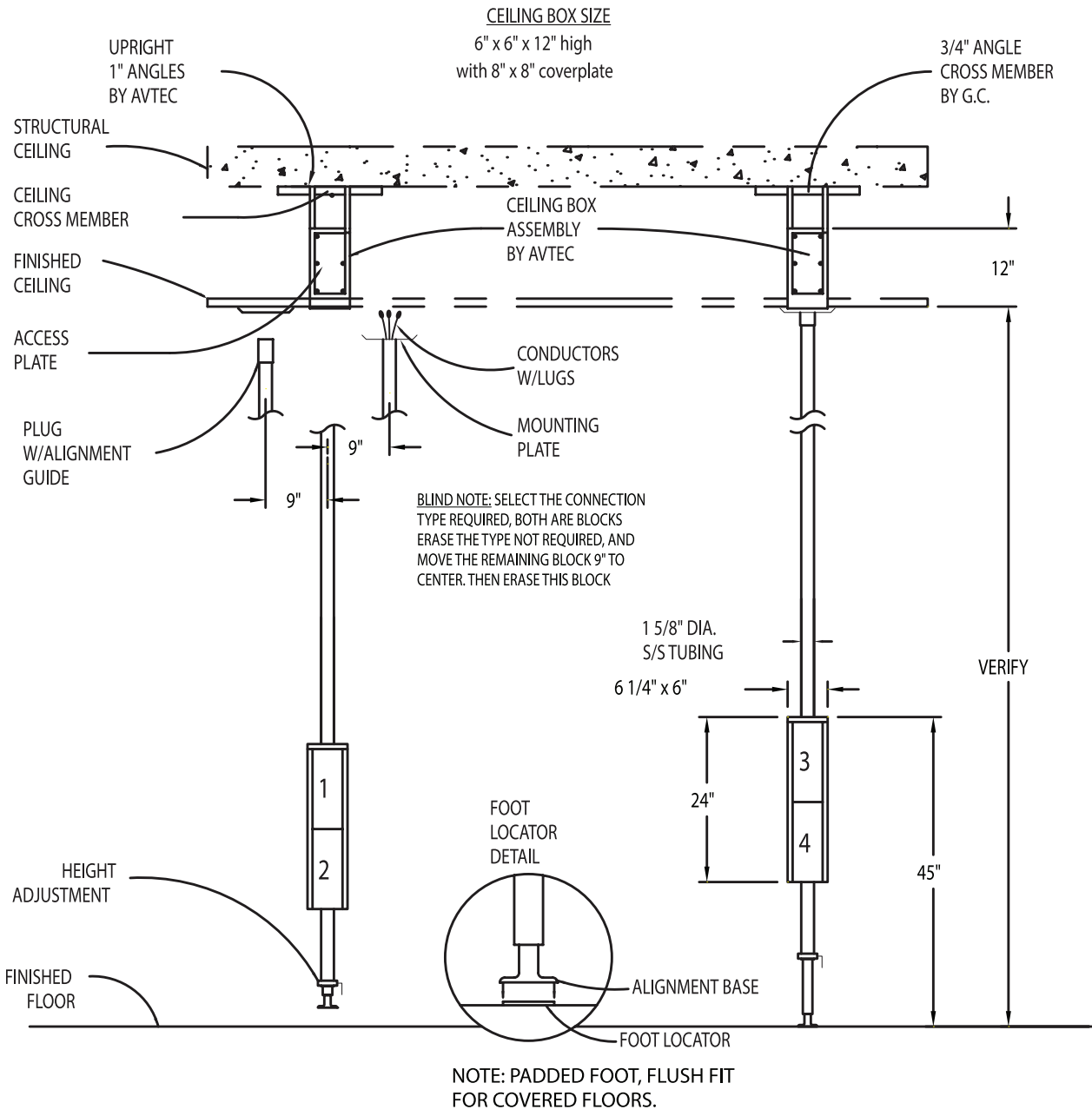
Avtec Electrapole, Model EPO with matching ceiling receptacle box assembly mounted in finished ceiling to provide one-point connection to equipment. Electrapole shall plug into ceiling receptacle assembly box and lock against the floor, and can be disconnected by releasing locking device. Unit shall consist of 1-3/4" diameter, 18 ga. Stainless steel tubing, with #4 finish, completely pre-wired per NEC using only UL listed components. Connection plates housing breakers and receptacles shall be provided as required for equipment to be powered. Telescoping design shall provide adjustment of + or -6". Electrical housing: 6" x 6" x 25", approximately 20-24" AFF.

### Standard Features:

- Point-of-use branch circuit protection with receptacle mounted adjacent to point-of-use branch circuit protection on 4.5 x 12" connection plate
- Ground fault circuit interrupter for 15 & 20 amp, 120/1, straight blade receptacles
- Cable bus
- Matching ceiling receptacle box with grounding type receptacle and junction box, fitted to mount flush with finished ceiling, including 3/4" angle supports ready to be mounted to structural cross members above finished ceiling

### Optional Accessories:

- Matching electrical cord sets for equipment to be connected
- Rubberized foot pad for use on finished floors
- Additional ceiling box assemblies



(A)

ELEVATION VIEW

(B)

Model	EP04	EP05	EP06	EP07	EP09
<b>Service Requirements (125% of Capacity)</b>	30 Amps 120/208/1	20 Amps 120/208/3	60 Amps 120/208/1	60 Amps 120/208/3	80 Amps 120/208/3
<b>System Capacity KW</b>	4.99 KW	5.76 KW	9.98 KW	17.28 KW	23.04 KW

