



WORKTOPS/UNDERCOUNTERS

COMPACT SERIES MODELS 9000-290 / 9000F-290

Self-contained refrigerated worktop/undercounter refrigerator or freezer units ranging from 27" to 72" long models. Stainless steel top, with 3" backsplash on worktop models. Electronically controlled R-290 refrigeration system mounted in rear of unit on removable, replaceable refrigeration package. Foamed in place urethane insulation and cordset for 115V operation. Shipped on casters pre-installed at factory.

PROJECT NAME:	
LOCATION:	
ITEM NO:	
QTY:	
MODEL NO:	
AIA NO:	
SIS NO:	
CSI SECTION:	11400

SHORT FORM SPEC: Self-contained refrigerated worktop/undercounter refrigerator or freezer with stainless steel top. Removable, replaceable refrigeration package mounted to rear of unit is electronically controlled R-290 refrigeration system. Base interior ends and door openings shall be high impact ABS with foamed in place urethane insulation. Base cabinet doors have recessed handles and include press-fit gaskets. Unit to be shipped standard on factory installed casters.



Model 9402-290 shown.

AVAILABLE MODELS:

REFRIGERATORS:

- 9404-290
- 9402-290
- 9404-32-290
- 9404-32D-290
- 9802-290
- 9301-290
- 9302-290
- 9602-290
- 9604-290

FREEZERS:

- 9404F-290
- 9402F-290
- 9404F-32-290
- 9404F-32D-290
- 9802F-290
- 9301F-290
- 9302F-290

STANDARD FEATURES:

- Self-contained, removable, replaceable refrigeration package that utilizes "CFC free" R290 SNAP compliant refrigerant
- "Front Breathing" refrigeration system
- Self-closing doors
- Factory installed casters on all models
- Electronic controlled refrigeration system with adaptive defrost

CABINET EXTERIOR: The top, sides, and front are stainless steel. Cabinet top to be one piece die-formed 20 gauge stainless steel with 1 1/2" high square nosing. Bottom and back of unit are corrosion resistant steel. Door openings are thermo-formed ABS plastic, which provide an easily cleanable thermal-break containing a full perimeter magnetic strip for positive sealing of press-fit gasket.

CABINET INTERIOR: Interior of cabinet is fully covered to meet N.S.F. standard #7. The Interior bottom, back, and top are anodized aluminum with covered corners for easy clean-up. The interior ends are ABS. Unit insulated with a minimum of 2.5" CFC free, foamed in place polyurethane. Models 9404-32D-290 and 9404F-32D-290; each drawer contains two 12" x 20" x 6" deep polycarbonate pans. Drawer tracks are 14 gauge stainless steel with 1-5/16" stainless steel ball bearings, self-closing and removable.

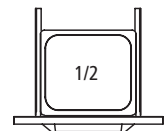
DOORS: Stainless steel front with easy to grasp recessed handles, mounted on heavy duty concealed hinges. Hinges are all stainless steel with bronze pivot pin in nylon bushing, spring loaded to be self-closing. Door with foamed in place insulation, press fit magnetic gaskets - (designed for installation & removal without tools), and deep draw ABS interior liner for maximum insulation value. Models 9404-32D-290 and 9404F-32D-290 have refrigerated drawers in lieu of door.

REFRIGERATION: CFC free, R-290 back-mounted refrigeration system to be self-contained with evaporator blower coil, compressor, electronic control, forced-air condensing coil and capillary tube contained in removable assembly. Condensate drip pan provided. Units totally prewired and to be supplied with 8' cordset (NEMA 5-15P) for 115V operation. "Front Breathing" refrigeration system with integrated rubber bumpers provide 1" rear clearance.

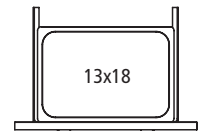
ORIGIN OF MANUFACTURE:
Designed and manufactured in the United States.

OPTIONS/ACCESSORIES:

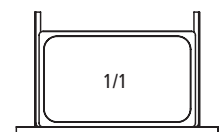
- Stainless steel back panel
- Overshelves (double or single tier)
- Backsplash: added/removed
- Drawers (available on refrigerators or 27" & 32" freezers only)



18" Drawers



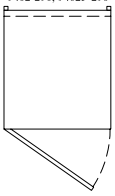
24" Drawers



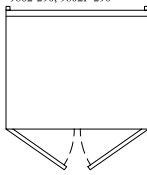
27" Drawers



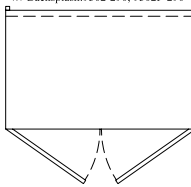
No Backsplash:
9404-290, 9404F-290
W/ Backsplash:
9402-290, 9402F-290



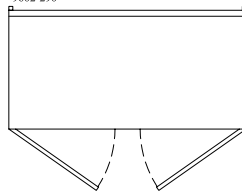
9802-290, 9802F-290



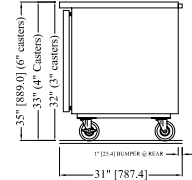
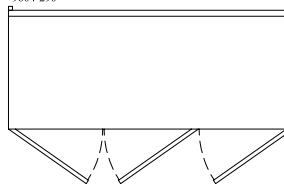
No Backsplash:9301-290, 9301F-290
W/ Backsplash:9302-290, 9302F-290



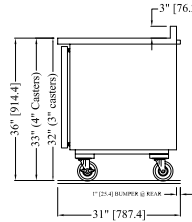
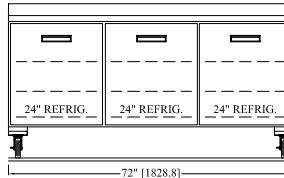
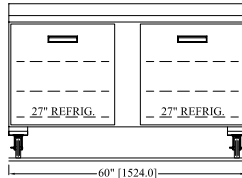
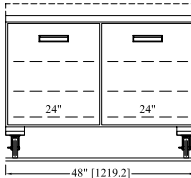
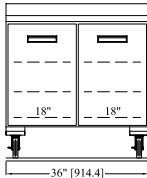
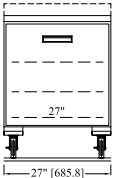
9602-290



9604-290

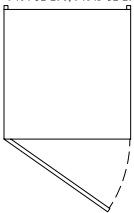


SIDE ELEVATION
VIEW FOR MODELS:
9404-290
9404F-290
9301-290
9301F-290

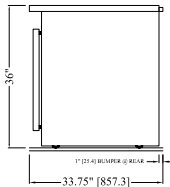
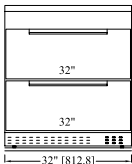
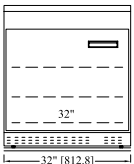
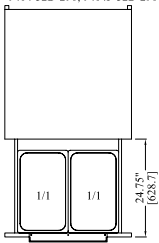


SIDE ELEVATION
VIEW FOR MODELS:
9402-290
9402F-290
9302-290
9302F-290
9602-290
9604-290

9404-32-290, 9404F-32-290



9404-32D-290, 9404F-32D-290



SIDE ELEVATION
VIEW FOR MODELS:
9404-32-290
9404F-32-290
9404-32D-290
9404F-32D-290
*DOOR MODELS SHOWN

Model	L	D*	H	Doors	Storage Cu. Ft.	HP	Volt	Amps	NEMA	Ship Wt.
9404-290 / 9402-290	27"	30"	33"/36"	(1) 27"	5.7	1/4	115/60/1	2.4	5-15P	185
9404-32-290	32"	32.75"	36"	(1) 32"	8.6	1/4	115/60/1	2.4	5-15P	252
9404-32D-290	32"	32.75"	36"	(2) Drawers	8.6	1/4	115/60/1	2.4	5-15P	252
9802-290	36"	30"	36"	(2) 18"	7.9	1/4	115/60/1	5.3	5-15P	220
9301-290 / 9302-290	48"	30"	33"/36"	(2) 24"	10.8	1/4	115/60/1	5.3	5-15P	265
9602-290	60"	30"	36"	(2) 27"	13	1/4	115/60/1	5.3	5-15P	300
9604-290	72"	30"	36"	(3) 24"	16.8	1/4	115/60/1	5.3	5-15P	330
9404F-290 / 9402F-290	27"	30"	33"/36"	(1) 27"	5.7	1/4	115/60/1	2.2	5-15P	185
9404F-32-290	32"	32.75"	36"	(1) 32"	8.6	1/3	115/60/1	2.6	5-15P	252
9404F-32D-290	32"	32.75"	36"	(2) Drawers	8.6	1/4	115/60/1	2.6	5-15P	252
9802F-290	36"	30"	36"	(2) 18"	7.9	1/3	115/60/1	2.6	5-15P	220
9301F-290 / 9302F-290	48"	30"	33"/36"	(2) 24"	10.8	1/3	115/60/1	2.6	5-15P	265

*All units have 1" rubber bumpers at rear, not included in above depth