



# CHEF SERVICE COUNTER

## CUSTOM ADD ON UNIT MODELS 90000

Add on units with 16 gauge reinforced tops, and integral backsplash with 45° return. 6" high adjustable legs.



|               |       |
|---------------|-------|
| PROJECT NAME: |       |
| LOCATION:     |       |
| ITEM NO:      |       |
| QTY:          |       |
| MODEL NO:     |       |
| AIA NO:       |       |
| SIS NO:       |       |
| CSI SECTION:  | 11400 |

**SHORT FORM SPEC:** Randell 90000 series utility stand with 16 gauge stainless steel top reinforced with two full length channel braces and integral 6.75" coved backsplash with 45° return at top. Unit shipped on standard 6" high adjustable legs mounted to full length channel frame assembly allowing movement of legs to avoid floor obstacles.



Model 91327 roll warmer shown

### AVAILABLE MODELS:

- 91327
- 92333
- 93324
- 93346
- 93368

### STANDARD FEATURES:

- Available under one piece top with other modular units up to 16' in length
- 6" high legs—adjustable and movable
- 45° integral stainless backsplash providing access to electrical chase is standard. 90° stainless backsplash is optional.

**SPECIFICATIONS:** Tops to be one piece of die formed 16 gauge stainless steel with 2-5/8" nosing. Backsplash to be coved cornered, with 45° return at top and overall height of 6 3/4". Ends at top fitted with recessed heavy duty steel bars for field bolting units together, producing a hairline seam. Body ends to be corrosion resistant steel. Legs to be 6" high stainless steel with adjustable bullet foot. Legs mounted to full length channel frame assembly which is integrally welded to bottom of body assembly. Legs can be moved left to right to avoid floor obstacles during installation.

### OPTIONS/ACCESSORIES:

- Dimensional modification (L,D,H)
- Mitered/angled corner
- Backsplash removed, modified
- Stainless riser/divider, end splash
- Urn trough
- 14 gauge top
- Cutting board
- Marine edge top
- Stainless steel end(s), back panel
- Laminated end(s), back panel
- Electrical connections
- Curb mount
- Channel base
- Casters

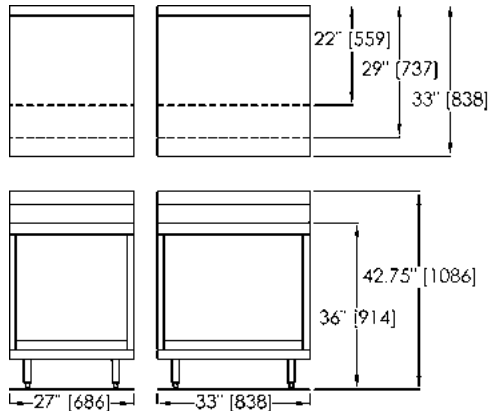


Model 93324 glass rack shown

### ADDITIONAL RESOURCES:

- [Request A Quote](#)
- [Sales Tools](#)
- [Find A Rep](#)
- [KCL AutoCAD/Revit](#)

91000 Series & 92000 Series  
Units with 16 gauge reinforced stainless steel top. To enclose built-in food warmer. Warmer supplied by others, installed by Randell. On 6" high adjustable and moveable legs. - unfinished ends.



93000 Series  
Unit with 16 gauge reinforced stainless steel top. To hold glass or cup racks. 6" or 8" spacing of angles. Full, partial or no top cut back to be provided, as specified. On 6" high adjustable and moveable legs - unfinished ends.

