



CHEF SERVICE COUNTER

CUSTOM SELF-CONTAINED WORKTOP REFRIGERATOR MODELS 51000

Self-contained refrigerated worktop unit with 16 gauge reinforced stainless steel top, and integral backsplash with 45° return. Stainless steel doors on concealed hinges. CFC free, R-513a refrigeration system. Evaporator blower coil with expansion valve supplied and installed. 6" high adjustable and movable legs.

SHORT FORM SPEC: Randell 51000 series model worktop refrigerator base with self-contained refrigeration system utilizing SNAP compliant non-ozone depleting R513 refrigerant. Top to be 1 piece die formed stainless steel with corrosion resistant exterior body. Includes Randell evaporator blower coil fitted to base, complete with mechanical control, expansion valve and automatic condensate evaporation. Base interior ends and door openings shall be high impact ABS plastic with covered corner stainless steel interior to form bottom, back and top of cabinet. Base cabinet door to have ABS liner and include press-fit magnetic gaskets for positive sealing to ABS formed door opening frame. Unit to be shipped on standard 6" adjustable legs mounted to full length channel frame assembly allowing movement of legs to avoid floor obstacles.

AVAILABLE MODELS:

- 51347-513
- 51362-513
- 51368-513
- 51386-513
- 51395-513

STANDARD FEATURES:

- Available under one piece top with other modular equipment up to 16' in length
- 6" high legs—adjustable and movable
- Foamed in place "CFC free" urethane insulation
- Side mounted compressor with mullion "Turbo" coil provides balanced cooling throughout the interior space
- SNAP compliant R-513a "CFC free" refrigerant
- Automatic condensate evaporator
- 45° integral stainless backsplash is standard. 90° stainless backsplash is optional.
- Front breathing louver design allows sealing to wall & curb mounting without special requirements
- Interior lighting inside the base cabinet

CABINET EXTERIOR: Top to be one piece of die-formed 16 gauge stainless steel with 2 1/2" nosing. Backsplash to be coved, with 45° return at top and overall height of 6 3/4". Ends at top fitted with recessed heavy duty steel bars for field bolting units together, producing a hairline seam. Hinged louver panel to be stainless steel. Exterior body to be corrosion resistant steel. Door opening frames are ABS and contain magnetic strip for positive seal of door gaskets. Work surface to be at 36" work height. Legs to be 6" high stainless steel with adjustable bullet foot. Legs mounted to full length channel frame assembly which is integrally welded to bottom of body assembly. Legs can be moved left to right to avoid floor obstacles during installation.

CABINET INTERIOR: Base interior to be ABS thermoplastic at ends only. Stainless steel interior liner to be coved corner to form bottom, back and top. One baked enamel finished shelf provided behind each door. Unit insulation to be CFC free foamed in place urethane.

DOORS: Door fronts to be 22-gauge stainless steel exterior front with 16 gauge stainless steel door pulls/handles. The interior liner is vacuum formed ABS with integral gasket retainer for easy cleaning and accepts Randell's Exclusive Press Fit Gasket system. Doors are mounted on concealed hinges. One baked enamel finished shelf provided behind each door.

REFRIGERATION: The refrigeration systems will utilize SNAP compliant "CFC free" R513a refrigerant with (0) ozone depletion (ODP) and (631) global warming potential (GWP). Refrigeration system to include condensing unit and control for field adjustability. Compressor housing to allow maximum airflow and permit mounting of standard condensate evaporator. Mullion coil, is coated to resist corrosion, and offers maximum air flow while allowing use of the full depth interior accessible from each side of the unit. Unit is totally prewired and supplied with 8' cordset (NEMA 5-15P) for 115V operation.



PROJECT NAME:	
LOCATION:	
ITEM NO:	
QTY:	
MODEL NO:	
AIA NO:	
SIS NO:	
CSI SECTION:	11400



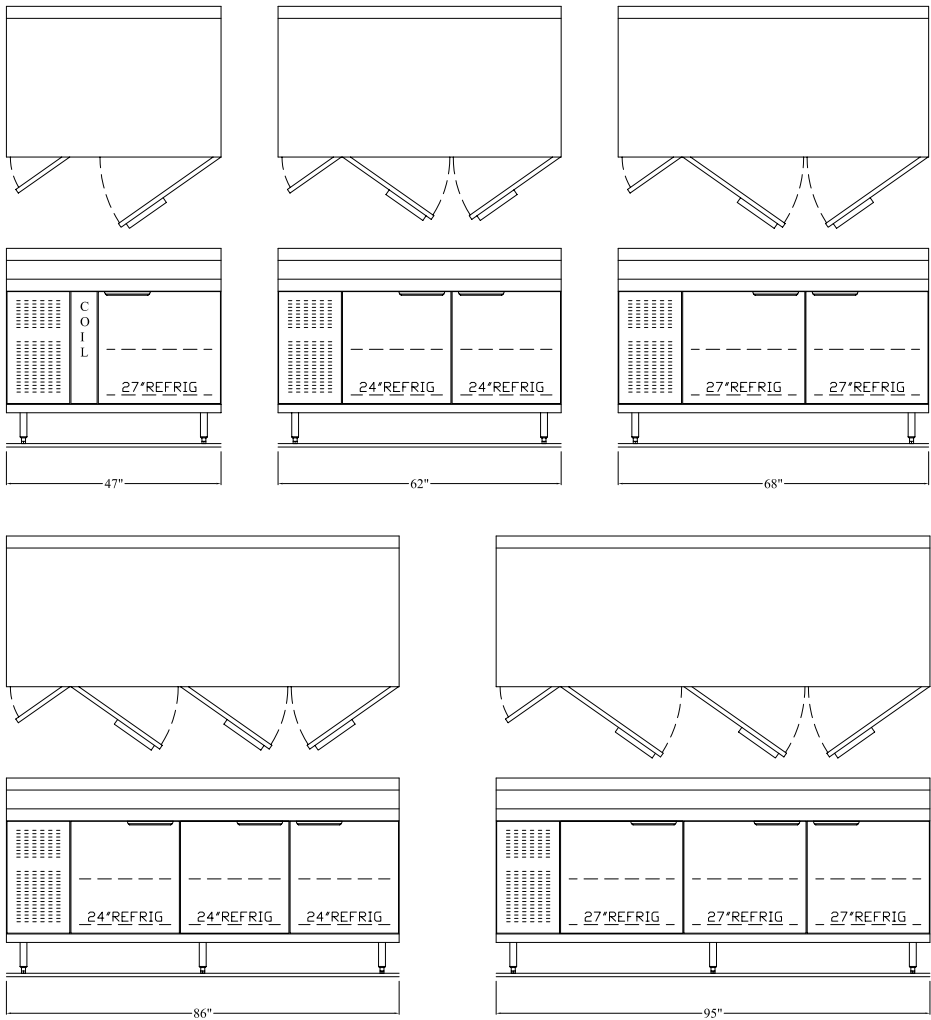
51362-513 shown with optional finished end

OPTIONS/ACCESSORIES:

- Drawers
- Backsplash removed
- Tray racks for sheet pans
- Cutting boards
- Stainless Steel Ends
- Stainless Steel Back
- Laminate fronts, ends and back options
- Casters in lieu of legs
- Over-shelving storage options
- Compressor on right option
- Curb mounting
- Additional/adjustable shelves

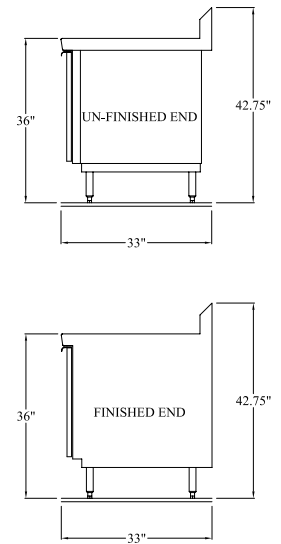
ADDITIONAL RESOURCES:

- [Request A Quote](#)
- [Sales Tools](#)
- [Find A Rep](#)
- [KCL AutoCAD/Revit](#)



DOOR OPENING SIZE - INTERIOR DEPTH

DOOR WIDTH	DOOR OPENING SIZES		INTERIOR DEPTH BEHIND DOOR
	LT. TO RT.	TOP TO BTM	
24"	19.25"	20.25"	26"
27"	22.25"	20.25"	26"



Length	47"	62"	68"	86"	95"
Model	51347-513	51362-513	51368-513	51386-513	51395-513
#of Doors	(1) 27" + 6" coil hsg.	(2) 24"	(2) 27"	(3) 24"	(3)27"
Min. Compr. Hsg.	14"	14"	14"	14"	14"
Storage Cu. Ft. 33"	8.14	13.02	14.97	20.83	22.46
H.P./Refrigerant	1/5hp/513a	1/5hp/513a	1/5hp/513a	1/4hp/513a	1/4hp/513a
Amps	4.5	4.5	4.5	6.6	6.6
Volt/Cycle/Phase	115/60/1	115/60/1	115/60/1	115/60/1	115/60/1
NEMA	5-15P	5-15P	5-15P	5-15P	5-15P
Ship Wt.- lbs	410	480	510	600	660