



DROP-IN

HOT FOOD WELL MODEL 9560

Electric operated, stainless steel drop-in hot food well unit w/ individual die-stamped 12" x 20" top openings, individual thermostatically controlled sealed food wells designed for wet operation. Controls mounted on separate pre-wired s/s control panel. Unit is totally pre-wired to junction box for single-point field connection.

SHORT FORM SPEC: Drop-in hot food well unit w/ individual die-stamped 12" x 20" top openings, electrically heated sealed food wells with or without drain(s). Separate pre-wired s/s control panel houses individual thermostatic controls. Unit is totally pre-wired to junction box for single-point field connection.

AVAILABLE MODELS*:

**Note: xxx represents voltage; 120, 208, 240*

WITH DRAINS & MANIFOLD:

- 95601-xxxDZ
- 95602-xxxDMZ
- 95603-xxxDMZ
- 95604-xxxDMZ
- 95605-xxxDMZ
- 95606-xxxDMZ
- 95602N-xxxDMZ
- 95603N-xxxDMZ

WITH NO DRAINS:

- 95601-xxxZ
- 95602-xxxZ
- 95603-xxxZ
- 95604-xxxZ
- 95605-xxxZ
- 95606-xxxZ
- 95602N-xxxZ
- 95603N-xxxZ

STANDARD FEATURES:

- Designed for wet operation
- Individually controlled wells for maximum operator control
- True thermostatic control for precise food temperatures
- Die stamped, raised sanitary rim pan openings in stainless steel top
- Available for 120V, 208V, or 240 volt operation
- Available with or without drains

UNIT TOP: Top to be one piece 18 gauge stainless steel. Top openings to be die-stamped with raised

perimeter rims.

FOOD WELLS: Units fitted with compliment of 12" x 20" x 6 1/2" deep, electrically heated, sealed food wells, designed for wet operation, and are individually and thermostatically controlled. Unit prewired to controls, mounted on separate stainless steel panel. Note: If optional drains & manifold are ordered, common gate is provided installed.

UNIT BODY: Fully insulated exterior body of corrosion resistant steel.

CONTROLS: Thermostatic controls (prewired to junction box) mounted on separate stainless steel panel for field installation in counter front. Each control has a lighted on/off switch that allows turning off of each well. Connections to heating elements to be located outside of heated zone to avoid wiring deterioration.

ORIGIN OF MANUFACTURE:

Designed and manufactured in the United States.



PROJECT NAME:	
LOCATION:	
ITEM NO:	
QTY:	
MODEL NO:	
AIA NO:	
SIS NO:	
CSI SECTION:	11400



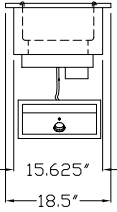
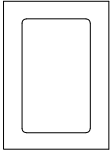
Model 95604-Z Shown

OPTIONS/ACCESSORIES:

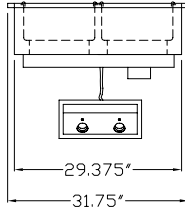
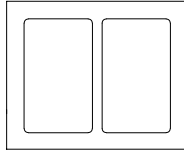
- Adaptor bars
- Extended thermostatic lead
- 500 watt low wattage elements
- Auto water fill (see 9560AWF spec sheet)



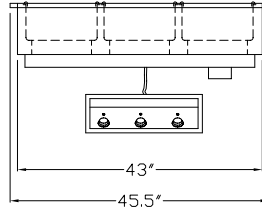
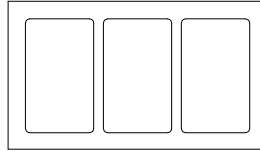
95601-xxxZ



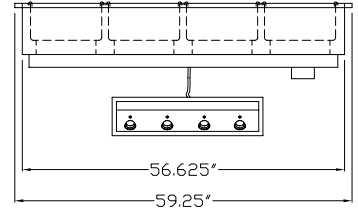
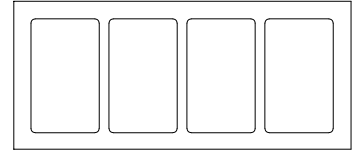
95602-xxxZ



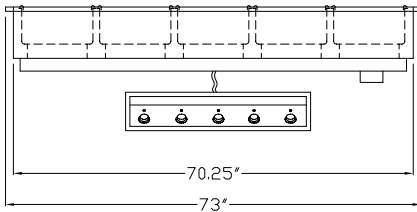
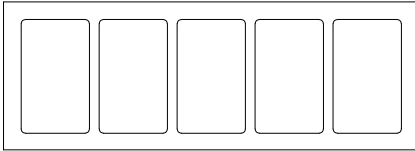
95603-xxxZ



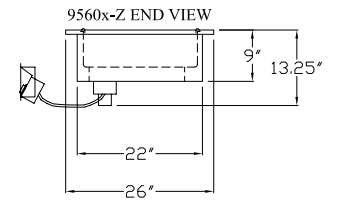
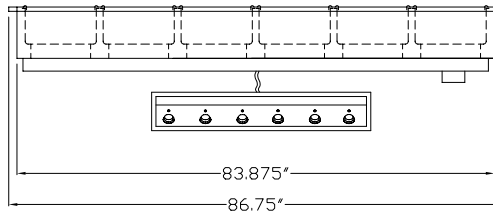
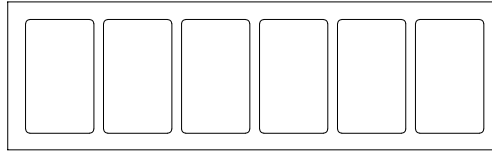
95604-xxxZ



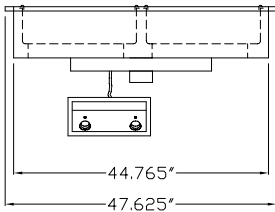
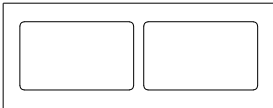
95605-xxxZ



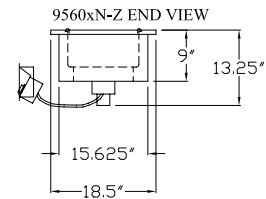
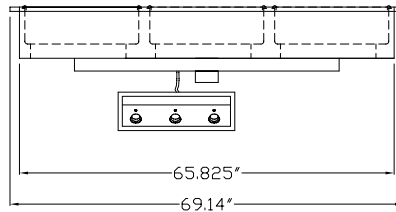
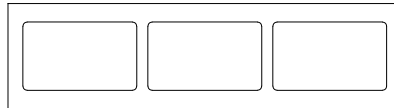
95606-xxxZ



95602N-xxxZ



95603N-xxxZ





Model*	Length	Width	Pan Capacity 12" x 20"	Body Size	Control Panel Size	Amps 120V	Amps 208V	Amps 240V	Approx. Weight
WITH DRAINS & MANIFOLD									
95601-xxxDZ	18.5"	26"	1	16.125" x 22.5"	14.25" x 5.75" x 6"	9.2	5.3	4.6	60
95602-xxxDMZ	31.75"	26"	2	29.875" x 22.5"	14.25" x 5.75" x 6"	18.4	10.6	9.2	100
95603-xxxDMZ	45.5"	26"	3	43.5" x 22.5"	20" x 5.75" x 6"	27.6	15.9	13.8	140
95604-xxxDMZ	59.25"	26"	4	57.125" x 22.5"	26" x 5.75" x 6"	36.8	21.2	18.4	180
95605-xxxDMZ	73"	26"	5	70.75" x 22.5"	32" x 5.75" x 6"	46	27.5	23	220
95606-xxxDMZ	86.75"	26"	6	84.375" x 22.5"	38" x 5.75" x 6"	55.2	31.7	27.6	260
95602N-xxxDMZ	47.6"	18.5"	2	45.264" x 16.125"	14.25" x 5.75" x 6"	18.4	10.6	9.2	100
95603N-xxxDMZ	69.2"	18.5"	3	66.327" x 16.125"	20" x 5.75" x 6"	27.6	15.9	13.8	140
WITH NO DRAINS									
95601-xxxZ	18.5"	26"	1	16.125" x 22.5"	14.25" x 5.75" x 6"	9.2	5.3	4.6	60
95602-xxxZ	31.75"	26"	2	29.875" x 22.5"	14.25" x 5.75" x 6"	18.4	10.6	9.2	100
95603-xxxZ	45.5"	26"	3	43.5" x 22.5"	20" x 5.75" x 6"	27.6	15.9	13.8	140
95604-xxxZ	59.25"	26"	4	57.125" x 22.5"	26" x 5.75" x 6"	36.8	21.2	18.4	180
95605-xxxZ	73"	26"	5	70.75" x 22.5"	32" x 5.75" x 6"	46	27.5	23	220
95606-xxxZ	86.75"	26"	6	84.375" x 22.5"	38" x 5.75" x 6"	55.2	31.7	27.6	260
95602N-xxxZ	47.6"	18.5"	2	45.264" x 16.125"	14.25" x 5.75" x 6"	18.4	10.6	9.2	100
95603N-xxxZ	69.2"	18.5"	3	66.327" x 16.125"	20" x 5.75" x 6"	27.6	15.9	13.8	140

Power supply requires hard wiring to "J" box. *Note: xxx represents voltage; 120, 208, 240