



REFRIGERATORS & FREEZERS

BLAST CHILLER UNDERCOUNTER MODEL BC-003UC-290

If you are concerned about food safety, looking to improve product quality and extend shelf life a Blast Chiller may be just what you need. The Randell BC series blast chillers follow the US FDA food code for safe food handling and are tested and certified by NSF to rapidly cool product through the 135°F to 40°F "danger zone" in 240 minutes or less. All Randell BC series blast chillers feature a touch screen display with easy to use intuitive controls. Data recorded throughout the chilling cycle for HACCP program documentation is easily retrieved through the front mounted USB port.

SHORT FORM SPEC: Randell model BC-003UC-290 undercounter blast chiller. Self-contained refrigeration system with automatic condensate evaporator. IP54 rated touch screen display featuring automatic cooling cycle start with single probe. Cabinet construction is stainless steel door, front, top and sides with foamed in place polyurethane insulation. Stainless steel interior with high impact ABS door opening. Door mounted on concealed self-closing hinges with 90° open stop includes recessed handle, easily removable press-fit magnetic gasket and stainless steel liner with probe holder. Unit to be shipped on heavy duty 3" concealed casters.

STANDARD FEATURES:

- Stainless steel front, sides & top
- Stainless steel interior
- Removable stainless steel pan slides
- Concealed 3" casters (factory installed)
- Automatic cooling cycle with food probe
- IP54 rated touch screen display with easy to use intuitive controls
- Automatic condensate evaporator
- Self-closing door hinge with 90° positive open stop
- (1) probe provided

CAPACITY: (3) 12"x20"x2.5" hotel pans.

CABINET EXTERIOR: #4 finish Stainless Steel front, door, louver, sides and top. Unit back and bottom are galvanized metal.

CABINET INTERIOR: Stainless steel, including stainless steel air plenums. The Door opening perimeter is provided with an ABS thermal break to prevent sweating. Stainless steel pan rack is removable without tools for easy cleaning. The door is stainless steel exterior with a stainless steel liner and is mounted on self-closing hinges with recessed handle. A press-fit magnetic gasket is provided for positive seal.

REFRIGERATION SYSTEM: Self-contained, R-290 refrigeration system air-cooled using two 1.5 horsepower compressors. Electronic touchscreen display supports automatic cooling control using food probes or a manual control using a timed cycle. A USB port for collecting data for HACCP monitoring. Features an automatic condensate evaporator.

PROJECT NAME:	
LOCATION:	
ITEM NO:	
QTY:	
MODEL NO:	
AIA NO:	
SIS NO:	
CSI SECTION:	11400

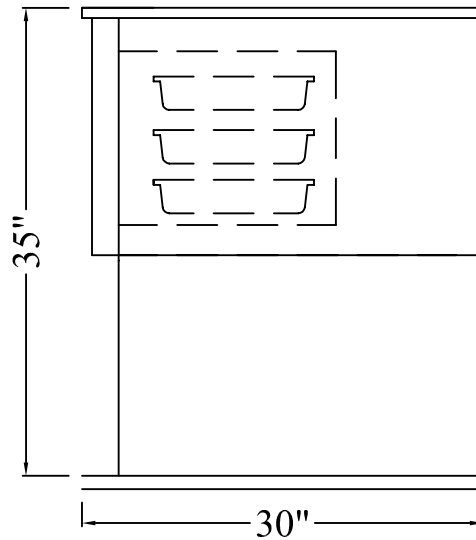
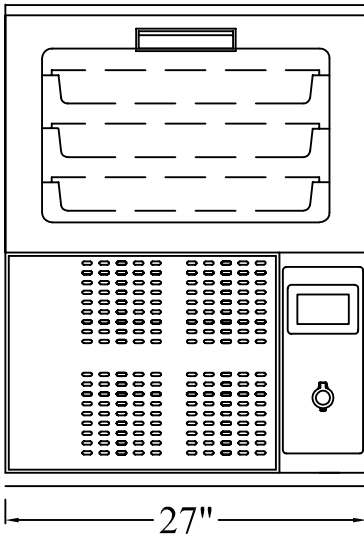
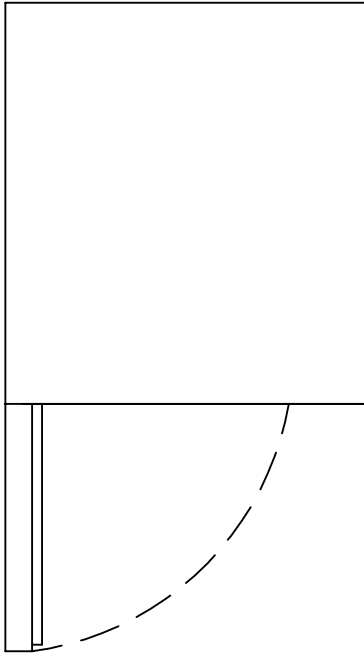


OPTIONS/ACCESSORIES:

- Add up to 2 probes
- Stainless steel finished back
- Remote operation

ADDITIONAL RESOURCES:

- [Request A Quote](#)
- [Sales Tools](#)
- [Find A Rep](#)
- [KCL AutoCAD/Revit](#)



L	D	H	Pan Capacity 12"x20"x2.5"	HP	Volt/Hz/Ph	Circuit Ampacity	NEMA	Crated Wt.
27"	30"	35"	3	1/2	120/60/1	20	5-20P	320