



PREP TABLE

FLAT CONDIMENT WIDE OPENING MODEL WPO

Self-contained refrigerator storage unit with mechanically cooled pan opening. These units are offered in a variety of lengths to meet your specific base storage or pan storage requirements. The single opening mechanically cooled pan opening uses Randell's exclusive design technologies to provide safe temperature holding in the harshest environments. Cold-wall conductive cooled pan opening with recessed pan ledge provides easy reach and cold above pans for optimal temperatures. Separate base and pan opening controllers give the operator precise control of the temperature in each zone and the ability to shut the pan opening off at night-conserves up to 60% of the daytime energy usage. Standard clean-out port valve allows pan opening to be easily cleaned and sanitized.

SHORT FORM SPEC: Randell WPO series preparation table with natural R290 refrigeration system. Includes independently controlled mechanically cooled pan opening and refrigerated base, each controlled by their own electronic control. Single pan opening to come standard with recessed pan ledge, adapter bars and oversized clean-out port for ease of cleanability. Base interior ends and door openings shall be high impact ABS plastic and be cooled with a blower coil located behind the mullion. Base cabinet doors to have heavy duty 16 ga. top mounted handles and include press-fit magnetic gaskets. Unit to be shipped standard on adjustable legs mounted to full length leg rails.

AVAILABLE MODELS:

- | | |
|--------------------|--------------------|
| 1 Section: | 3 Sections: |
| WPO1x133 | WPO2x354 |
| 2 Sections: | WPO2x357 |
| WPO1x236 | WPO2x360 |
| WPO1x239 | WPO2x363 |
| WPO1x242 | WPO2x366 |
| WPO1x245 | WPO2x369 |
| WPO1x248 | WPO2x372 |
| WPO1x251 | |
| WPO1x254 | |

STANDARD FEATURES:

- Cold-wall conductive cooled pan opening with recessed pan ledge for easy reach and cold above pans
- Base cooled by high capacity mullion coil refrigeration system with adaptive defrost
- Visible externally mounted electronic controllers to monitor pan opening and base settings
- Independent temp control for pan opening and base allows precise temperature maintenance in each zone
- 100% front breathing compressor housing allows sealing to wall and curb mounting without special requirements
- Easy maintenance press-fit gaskets (removable without tools)
- Exclusive completely sealed pan opening interior with clean-out port allows pan opening to be easily cleaned and sanitized
- Hinged compressor compartment panel for access to clean-out port and condenser coil cleaning
- 6" high legs, adjustable and movable along full length leg rail
- Available up to 16' under one common assembly
- Adapter bars to accommodate a compliment of 1/6 size pans

REFRIGERATION SYSTEM: All models will utilize state of the art, energy efficient R290 compressor systems with (0) ozone depletion (ODP) and (3) global warming potential (GWP). The pan opening is conductively cooled by coldwall wrapped tank utilizing Randell's exclusive aluminum cold transfer plates to maximum heat removal capacity. Independently controlled pan opening and base temperatures are managed by externally mounted visible electronic controllers metered using capillary tube systems. Independent pan opening control (separate from the base cabinet temperature control) allows the operator precise control of the

temperature in each zone and the ability to shut the pan opening off at night for energy savings up to 60% of the daytime usage. Independent base control featuring adaptive defrost allows precise control of the base cabinet.

CABINET EXTERIOR: Top to be one piece of die-formed 16 gauge stainless steel with 2 1/2" nosing. Ends at top fitted with recessed heavy duty steel bars for field bolting units together, producing a hairline seam. Hinged louver panel to be stainless steel. Exterior body to be corrosion resistant steel. Door opening frames are ABS and contain magnetic strip for positive seal of door gaskets. Work surface to be at 36" work height. Legs to be 6" high stainless steel with adjustable bullet foot. Legs mounted to full length channel frame assembly which is integrally welded to bottom of body assembly. Legs can be moved left to right to avoid floor obstacles during installation.

CABINET INTERIOR: Base interior to be ABS thermoplastic at ends only. Stainless steel interior liner to be covered cornered to form bottom, back and top. Unit insulation to be CFC free foamed in place urethane.

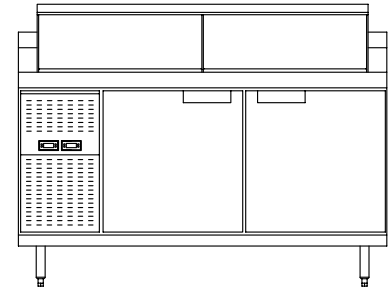
DOORS: Door fronts to be 22-gauge stainless steel exterior front with 16 gauge stainless steel door pulls/handles. The interior liner is vacuum formed ABS with integral gasket retainer for easy cleaning and accepts Randell's Exclusive Press Fit Gasket system. Doors are mounted on concealed hinges.

ORIGIN OF MANUFACTURE:

Designed, tested and manufactured in the United States (MI, MS).



PROJECT NAME:	
LOCATION:	
ITEM NO:	
QTY:	
MODEL NO:	
AIA NO:	
SIS NO:	
CSI SECTION:	11400

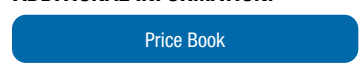


Model WPO1L248 shown

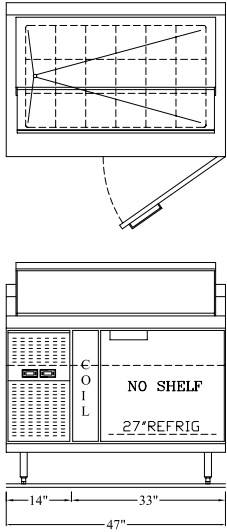
OPTIONS/ACCESSORIES:

- Cabinet:**
- Remove backsplash
 - Intermediate shelves
 - Adjustable shelves
 - Stainless steel finished back
 - Stainless steel finished ends
 - Laminate fronts, ends and back
 - Casters in lieu of legs
 - Door lock(s)
- Pan Opening Covers:**
- Lift-off (removable)
 - Hinged slide-back cover
- Work-Surface:**
- White poly cutting board, 1/2" or 3/4"
 - Richlite cutting board, 1/2" or 3/4"
 - Wire prep racks (for placement on stainless steel surface)
- Additional Storage:**
- Partial length pan opening
 - Overshelling storage options
- Voltage:**
- 220-230V/50-60Hz supplied with cord (plug provided in field by others)

ADDITIONAL INFORMATION:



WPO1L133



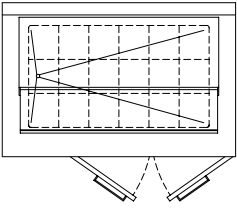
MODEL	COMPRESSOR		BASE SECTION(S)	STANDARD REF. BASE CONFIGURATION	MIN. UNIT LENGTH*	PAN OPENING CAPACITY 1/6 SIZE PAN	BASE STORAGE CUBIC FT/ DRAWER CAPACITY	H.P./ REFRIGERANT	VOLT/ CYCLE/ PHASE	AMPS	NEMA PLUG	SHIP WT.
	QTY/COMP. HSG SIZE	LOCATION "x"										
1 SECTION BASE STORAGE-SELF CONTAINED REFRIGERATORS WITH WIDE DEPTH FLAT OPENING												
WPO1x133	(1)-14" MINIMUM	R= RIGHT, L=LEFT	1	(1) 27" DOOR, 6" COIL	47	18	4.78	1/3-R290	115/60/1	6	5-15P	510

*Additional length added to compressor housing.

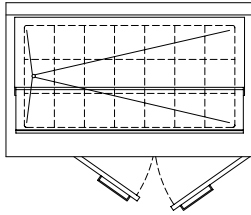
All drawings shown with compressor left (WPOxL) version of unit; compressor right model (WPOxR) is mirrored. Section sizes and locations may be adjusted within the footprint of the model.



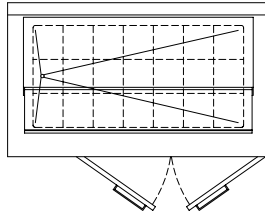
WPO1L236



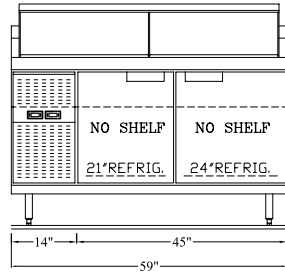
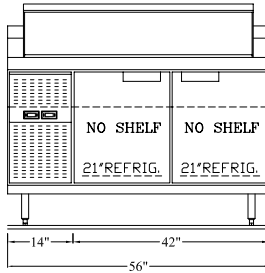
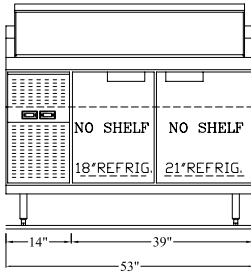
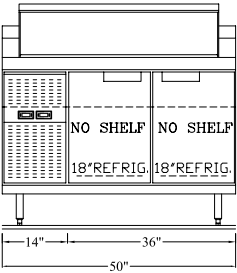
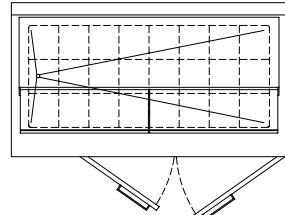
WPO1L239



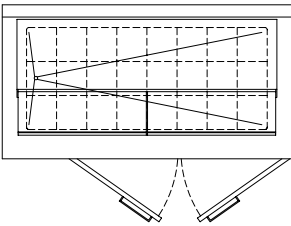
WPO1L242



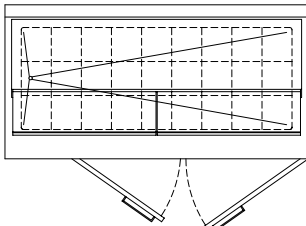
WPO1L245



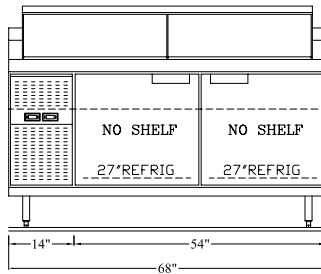
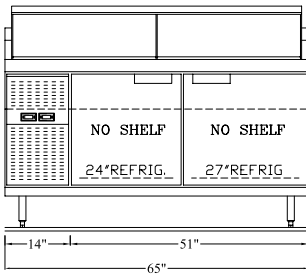
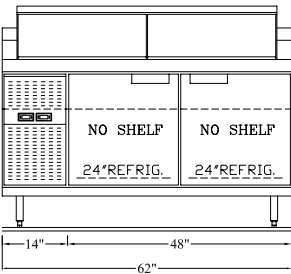
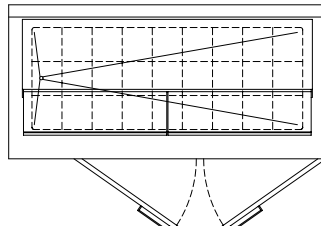
WPO1L248



WPO1L251



WPO1L254



All drawings shown with compressor left (WPOxL) version of unit; compressor right model (WPOxR) is mirrored. Section sizes and locations may be adjusted within the footprint of the model.

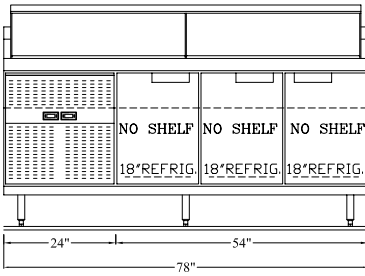
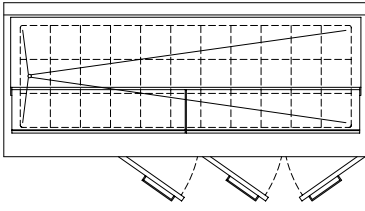
MODEL	COMPRESSOR		BASE SECTION(S)	STANDARD REF. BASE CONFIGURATION	MIN. UNIT LENGTH*	PAN OPENING CAPACITY 1/6 SIZE PAN	BASE STORAGE CUBIC FT/ DRAWER CAPACITY	H.P./ REFRIGERANT	VOLT/ CYCLE/ PHASE	AMPS	NEMA PLUG	SHIP WT.
	QTY/COMP. HSG SIZE	LOCATION "x"										
2 SECTION BASE STORAGE-SELF CONTAINED REFRIGERATORS WITH WIDE DEPTH FLAT OPENING												
WPO1x236	(1)-14" MINIMUM	R= RIGHT, L=LEFT	2	(2) 18" DOORS	50	18	5.69	1/3-R290	115/60/1	6	5-15P	545
WPO1x239	(1)-14" MINIMUM	R= RIGHT, L=LEFT	2	(1) 18" DOOR, (1) 21" DOOR	53	21	6.34	1/3-R290	115/60/1	6	5-15P	564
WPO1x242	(1)-14" MINIMUM	R= RIGHT, L=LEFT	2	(2) 21" DOORS	56	21	6.98	1/3-R290	115/60/1	6	5-15P	583
WPO1x245	(1)-14" MINIMUM	R= RIGHT, L=LEFT	2	(1) 21" DOOR, (1) 24" DOOR	59	24	7.62	1/3-R290	115/60/1	6	5-15P	602
WPO1x248	(1)-14" MINIMUM	R= RIGHT, L=LEFT	2	(2) 24" DOORS	62	24	8.23	1/3-R290	115/60/1	6	5-15P	621
WPO1x251	(1)-14" MINIMUM	R= RIGHT, L=LEFT	2	(1) 24" DOOR, (1) 27" DOOR	65	27	8.91	1/3-R290	115/60/1	6	5-15P	640
WPO1x254	(1)-14" MINIMUM	R= RIGHT, L=LEFT	2	(2) 27" DOORS	68	27	9.55	1/3-R290	115/60/1	6	5-15P	659

*Additional length added to compressor housing.

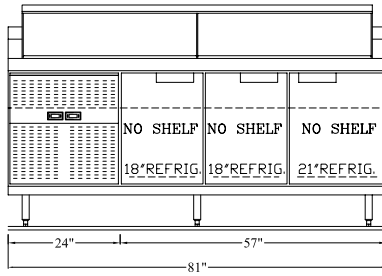
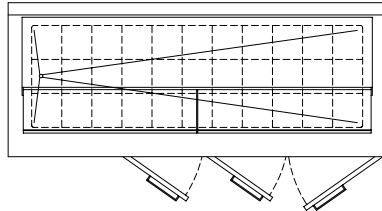
All drawings shown with compressor left (WPOxL) version of unit; compressor right model (WPOxR) is mirrored. Section sizes and locations may be adjusted within the footprint of the model.



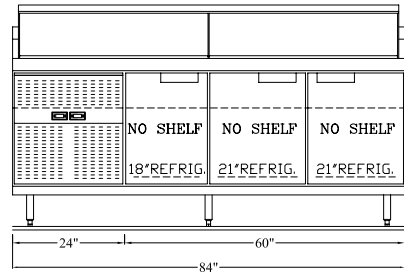
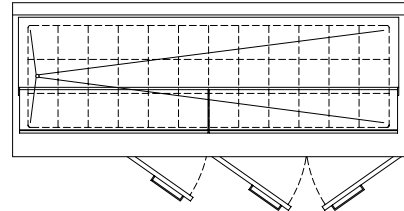
WPO2L354



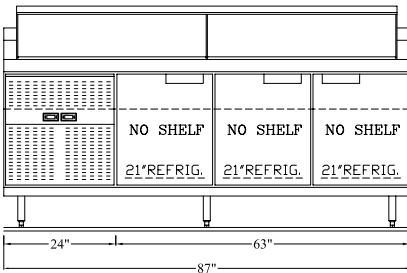
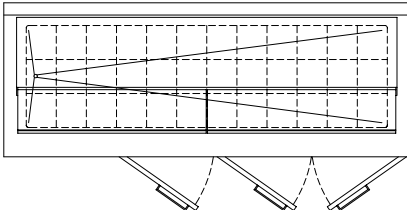
WPO2L357



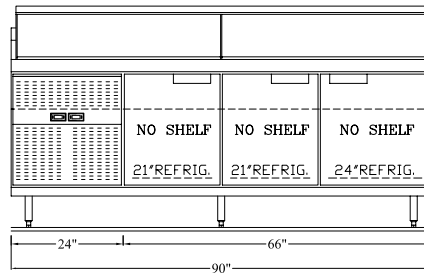
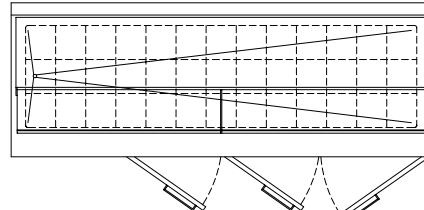
WPO2L360



WPO2L363

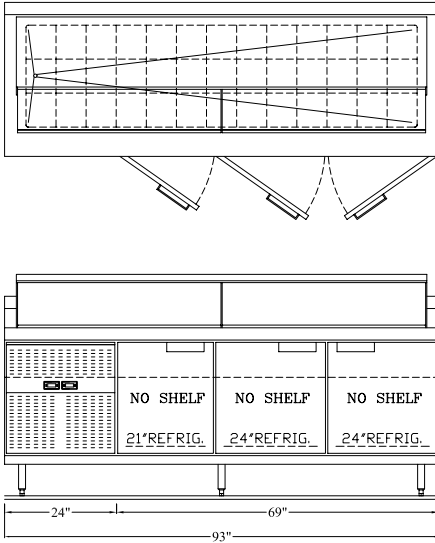


WPO2L366

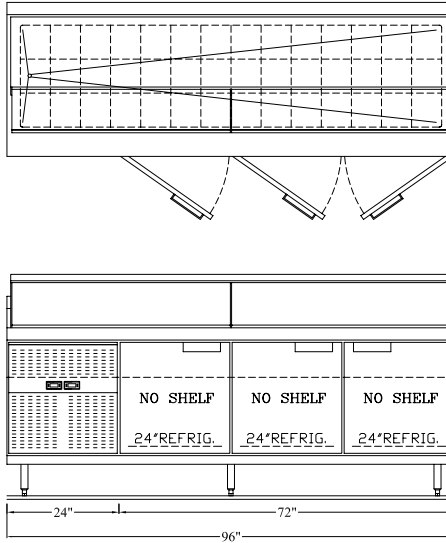


All drawings shown with compressor left (WPOxL) version of unit; compressor right model (WPOxR) is mirrored. Section sizes and locations may be adjusted within the footprint of the model.

WPO2L369



WPO2L372



MODEL	COMPRESSOR		BASE SECTION(S)	STANDARD REF. BASE CONFIGURATION	MIN. UNIT LENGTH*	PAN OPENING CAPACITY 1/6 SIZE PAN	BASE STORAGE CUBIC FT/ DRAWER CAPACITY	H.P./ REFRIGERANT	VOLT/ CYCLE/ PHASE	AMPS	NEMA PLUG	SHIP WT.
	QTY/COMP. HSG SIZE	LOCATION "x"										
3 SECTION BASE STORAGE-SELF CONTAINED REFRIGERATORS WITH WIDE DEPTH FLAT OPENING												
WPO2x354	(2)-24" MINIMUM	R= RIGHT, L=LEFT	3	(3) 18" DOORS	78	33	8.54	(2)1/4-R290	115/60/1	5.8	5-15P	720
WPO2x357	(2)-24" MINIMUM	R= RIGHT, L=LEFT	3	(2) 18" DOORS, (1) 21" DOOR	81	33	9.18	(2)1/4-R290	115/60/1	5.8	5-15P	739
WPO2x360	(2)-24" MINIMUM	R= RIGHT, L=LEFT	3	(1) 18" DOOR, (2) 21" DOORS	84	36	9.83	(2)1/4-R290	115/60/1	5.8	5-15P	758
WPO2x363	(2)-24" MINIMUM	R= RIGHT, L=LEFT	3	(3) 21" DOORS	87	36	10.47	(2)1/4-R290	115/60/1	5.8	5-15P	777
WPO2x366	(2)-24" MINIMUM	R= RIGHT, L=LEFT	3	(2) 21" DOORS, (1) 24" DOOR	90	39	11.11	(2)1/4-R290	115/60/1	5.8	5-15P	796
WPO2x369	(2)-24" MINIMUM	R= RIGHT, L=LEFT	3	(1) 21" DOOR, (2) 24" DOORS	93	39	11.72	(2)1/4-R290	115/60/1	5.8	5-15P	815
WPO2x372	(2)-24" MINIMUM	R= RIGHT, L=LEFT	3	(3) 24" DOORS	96	42	12.4	(2)1/4-R290	115/60/1	5.8	5-15P	834

*Additional length added to compressor housing.

All drawings shown with compressor left (WPOxL) version of unit; compressor right model (WPOxR) is mirrored. Section sizes and locations may be adjusted within the footprint of the model.

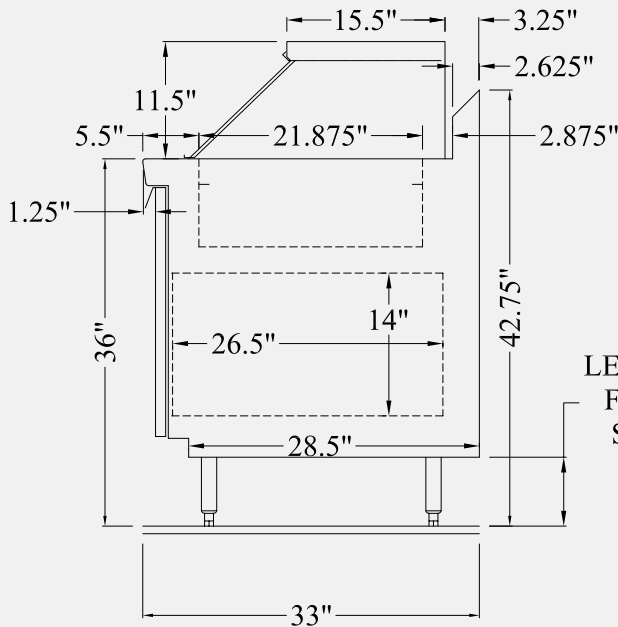


DOORS:

DOOR OPENING SIZES	CLEARANCES THROUGH DOOR		INTERIOR DEPTH BEHIND DOOR	ACCEPTS SHEET PAN SLIDES
	DOOR WIDTH	LT. TO RT.	TOP TO BOTTOM	
18"	13 1/4"	14"	26.5"	No
21"	16 1/4"	14"	26.5"	No
24"	19 1/4"	14"	26.5"	Yes
27"	22 1/4"	14"	26.5"	Yes

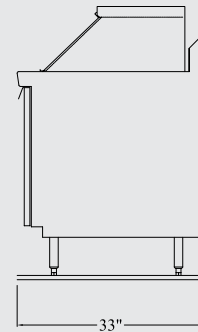
*Shelf depth is 25-1/4" on 33" deep equipment.

DIMENSIONAL DETAIL:

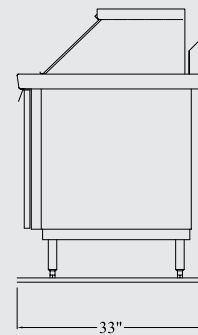


LEGS ADJUSTABLE
FROM: 6" - 7.125"
SHOWN @ 6.75"

Stainless Steel Finished End:

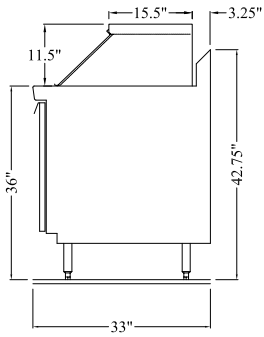


Unfinished End:

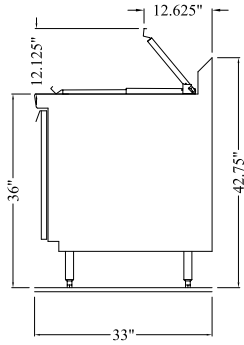


OPTIONAL COVERS:

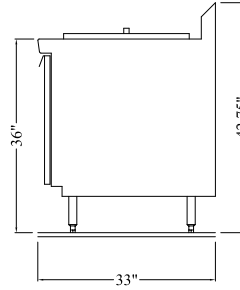
Hood Cover (standard):



Hinged Slide-Back Cover:



Lift-Off Cover:



*Units shown with optional stainless steel end panels.