



OPERATOR MANUAL

IMPORTANT INFORMATION, KEEP FOR OPERATOR

888-994-7636, fax 888-864-7636
unifiedbrands.net

THIS MANUAL MUST BE RETAINED FOR FUTURE REFERENCE. READ, UNDERSTAND AND FOLLOW THE INSTRUCTIONS AND WARNINGS CONTAINED IN THIS MANUAL.

FOR YOUR SAFETY Do not store or use gasoline or other flammable vapors and liquids in the vicinity of this or any other appliance.

WARNING R290 flammable refrigerant in use. Improper installation, adjustment, alteration, service or maintenance can cause property damage, injury or death. Read the installation, operating and maintenance instructions thoroughly before installing or servicing this equipment.

NOTIFY CARRIER OF DAMAGE AT ONCE It is the responsibility of the consignee to inspect the container upon receipt of same and to determine the possibility of any damage, including concealed damage. Randell suggests that if you are suspicious of damage to make a notation on the delivery receipt. It will be the responsibility of the consignee to file a claim with the carrier. We recommend that you do so at once.

Manufacture Service/Questions 888-994-7636.

This manual provides information for:

- CUSTOM PREP TABLES**
- LPNPO SERIES
- LPWPO SERIES
- NPO SERIES
- WPO SERIES
- NPR SERIES
- WPR SERIES

RETAIN THIS MANUAL FOR FUTURE REFERENCE

NOTICE: Due to a continuous program of product improvement, Randell reserves the right to make changes in design and specifications without prior notice.

NOTICE: Please read the entire manual carefully before installation. If certain recommended procedures are not followed, warranty claims will be denied.

MODEL NUMBER _____

SERIAL NUMBER _____

INSTALLATION DATE _____

The serial number is located behind the hinged vented door of the compressor machine compartment. An example is shown here.

SERIAL NUMBER **XXXXXXXXXX**
MODEL NUMBER **XXXXXXXXXX**
DESCRIPTION _____

IMPORTANT - READ FIRST - IMPORTANT

| | | |
|---------------------------------------------------------------------------------------------------------------------------------------------------------------------------------------------|----------------|-------------------------------------------------------------------------------------------------------------------------------------------------------------------------------------------------------------|
| | CAUTION | AVERTISSEMENT RISQUE D'INCENDIE OU D'EXPLOSION. RÉFRIGÉRANT INFLAMMABLE UTILISÉ. SUIVEZ ATTENTIVEMENT LES INSTRUCTIONS DE MANUTENTION DANS LE RESPECT DES RÉGLEMENTS DU GOUVERNEMENT DES ÉTATS-UNIS. |
| A3 CLASSIFIED REFRIGERANT RISK OF FIRE OR EXPLOSION DUE TO FLAMMABLE REFRIGERANT USED. FOLLOW HANDLING INSTRUCTIONS CAREFULLY IN COMPLIANCE WITH THE U.S. GOVERNMENT REGULATIONS. | | |

| | | |
|-----------------------------------------------------------------------------------------------------------------------------------------------------------------------------------------|----------------|------------------------------------------------------------------------------------------------------------------------------------------------------------------------------------------|
| | CAUTION | ATTENTION Risque d'incendie ou d'explosion dû à la perforation du tube de réfrigérant. Suivez attentivement les instructions de manipulation. Fluide frigorigène inflammable utilisé. |
| A3 CLASSIFIED REFRIGERANT RISK OF FIRE OR EXPLOSION DUE TO PUNCTURE OF REFRIGERANT TUBING; FOLLOW HANDLING INSTRUCTIONS CAREFULLY. FLAMMABLE REFRIGERANT USED. | | |
| PRECAUCIÓN Riesgo de incendio o explosión debido a la perforación de la tubería de refrigerante. Siga cuidadosamente las instrucciones de manejo. Refrigerante inflamable utilizado. | | |

| | | |
|-----------------------------------------------------------------------------------------------------------------------------------------------------------------|----------------|------------------------------------------------------------------------------------------------------------------------------------------------------------------------------|
| | CAUTION | MISE EN GARDE RISQUE D'INCENDIE OU D'EXPLOSION. ÉLIMINER (or DISPOSER), CORRECTEMENT CONFORMÉMENT AUX RÉGLEMENTATIONS FÉDÉRALES OU LOCALES. RÉFRIGÉRANT INFLAMMABLE UTILISÉ. |
| A3 CLASSIFIED REFRIGERANT RISK OF FIRE OR EXPLOSION. DISPOSE OF PROPERLY IN ACCORDANCE WITH FEDERAL OR LOCAL REGULATIONS. FLAMMABLE REFRIGERANT USED. | | |
| PRECAUCIÓN RIESGO DE INCENDIO O EXPLOSION. DESÉCHELO ADECUADAMENTE CONFORME A LOS REGLAMENTOS FEDERALES O LOCALES. REFRIGERANTE INFLAMABLE UTILIZADO. | | |

| | | |
|----------------------------------------------------------------------------------------------------------------------------------------------------------------------------------|---------------|------------------------------------------------------------------------------------------------------------------------------------------------------------------------|
| | DANGER | DANGER RISQUE D'INCENDIE OU D'EXPLOSION. RÉFRIGÉRANT INFLAMMABLE UTILISÉ. POUR ÊTRE RÉPARÉ OUE PAR UN TECHNICIEN QUALIFIÉ. NE PAS PERFORER LE TUBE RÉFRIGÉRANT. |
| A3 CLASSIFIED REFRIGERANT RISK OF FIRE OR EXPLOSION. FLAMMABLE REFRIGERANT USED. TO BE REPAIRED ONLY BY TRAINED SERVICE PERSONNEL. DO NOT PUNCTURE REFRIGERANT TUBING. | | |

| | | |
|---------------------------------------------------------------------------------------------------------------------------------------------------------------------------------------------------------------------------------|----------------|---------------------------------------------------------------------------------------------------------------------------------------------------------------------------------------------------------------------------------------------------|
| | CAUTION | MISE EN GARDE RISQUE D'INCENDIE OU D'EXPLOSION. RÉFRIGÉRANT INFLAMMABLE UTILISÉ. CONSULTER LE MANUEL DE RÉPARATION / GUIDE DE L'UTILISATEUR AVANT D'ESSAYER D'INSTALLER OU DE RÉPARER CE PRODUIT. TOUTES LES PRÉCAUTIONS DOIVENT ÊTRE RESPECTÉES. |
| A3 CLASSIFIED REFRIGERANT RISK OF FIRE OR EXPLOSION. FLAMMABLE REFRIGERANT USED. CONSULT REPAIR MANUAL / OWNER'S GUIDE BEFORE ATTEMPTING TO INSTALL OR SERVICE THIS PRODUCT. ALL SAFETY PRECAUTIONS MUST BE FOLLOWED. | | |
| PRECAUCIÓN RIESGO DE INCENDIO O EXPLOSION. REFRIGERANTE INFLAMABLE UTILIZADO. CONSULTE EL MANUAL DE REPARACIÓN / MANUAL DEL USUARIO ANTES DE INSTALAR O REPARAR ESTE PRODUCTO. DEBEN SEGUIRSE LAS PRECAUCIONES DE SEGURIDAD. | | |

| | | | |
|---------------------------------------------------------------------------------------------------------------------------------------------------------------------------------------|---------------|------------------------------------------------------------------------------------------------------------------------------------------------------------------------------------------------------|---------------------------|
| | DANGER | RISQUE D'INCENDIE OU D'EXPLOSION. INFLAMMABLE RÉFRIGÉRANT UTILISÉ. NE PAS UTILISER DE DISPOSITIFS MÉCANIQUES POUR DÉGIVRE LE RÉFRIGÉRATEUR. NE FAIRE AUCUN TUBE RÉFRIGÉRANT DE PONCTION. | WARNING / ALERTE |
| A3 CLASSIFIED REFRIGERANT RISK OF FIRE OR EXPLOSION. FLAMMABLE REFRIGERANT USED. DO NOT USE MECHANICAL DEVICES TO DEFROST REFRIGERATOR. DO NOT PUNCTURE REFRIGERANT TUBING. | | DO NOT REMOVE PANEL - HIGH VOLTAGE - QUALIFIED PERSONNEL ONLY NE PAS RETIRER LE PANEAU - HAUTE TENSION - PERSONNEL QUALIFIÉ SEULEMENT NO RETIRE EL PANEAL - ALTA TENSION - CALIFICADO PERSONAL | CAUTION / ATENCIÓN |
| RISGO DE INCENDIO O EXPLOSION. REFRIGERANTE INFLAMABLE UTILIZADO. NO UTILICE DISPOSITIVOS MECÁNICOS PARA DESCONGELAR EL REFRIGERADOR. NO PERFORE LA TUBERÍA DEL REFRIGERANTE. | | MOVING PARTS, DO NOT OPERATE WITH COVER REMOVED PIEZAS MÓVILES, NO PASE FIANTE FUNCIONAR SIN CUBRILE LAS PIEZAS DE MOVIMIENTO NO FUNCIONAN CON LA CUBIERTA RETIRADA | ATTENTION |



Information contained in this document is known to be current and accurate at the time of printing/creation. Reference our product line website for the most updated product information and specifications. © 2023 Electrolux Professional, Inc. All Rights Reserved.

INSTALLATION

CAUTION: THIS UNIT CONTAINS R290 FLAMMABLE REFRIGERANT. USE CAUTION WHEN HANDLING MOVING AND USE OF THE REFRIGERATOR OR FREEZER. AVOID DAMAGING THE REFRIGERANT TUBING OR INCREASE THE RISK OF A LEAK.

WARNING: FAILURE TO FOLLOW INSTALLATION GUIDELINES AND RECOMMENDATIONS MAY VOID THE WARRANTY ON YOUR UNIT.

WARNING: IT IS IMPORTANT THAT YOUR UNIT HAS ITS OWN DEDICATED LINE. CONDENSING UNITS ARE DESIGNED TO OPERATE WITH A VOLTAGE FLUCTUATION OF PLUS OR MINUS 10% OF THE VOLTAGE INDICATED ON THE UNIT DATA TAG. BURN OUT OF A CONDENSING UNIT DUE TO EXCEEDING VOLTAGE LIMITS WILL VOID THE WARRANTY.

THE DANFOSS CONTROLLER HAS LOW VOLTAGE PROTECTION AND WILL NOT OUTPUT VOLTAGE TO THE COMPRESSOR IF VOLTAGE IS LESS THAN 104V.

WARNING: IT IS IMPORTANT THAT A VOLTAGE READING BE MADE AT THE COMPRESSOR MOTOR ELECTRICAL CONNECTIONS, WHILE THE UNIT IS IN OPERATION TO VERIFY THE CORRECT VOLTAGE REQUIRED BY THE COMPRESSOR IS BEING SUPPLIED. LOW OR HIGH VOLTAGE CAN DETRIMENTALLY AFFECT OPERATION AND THEREBY VOID ITS WARRANTY.

WARNING: EVAPORATOR FANS RUN CONTINUOUSLY WHILE THE BASE IS POWERED ON.

WARNING: THIS UNIT IS INTENDED FOR USE IN LABORATORIES IN COMMERCIAL, INDUSTRIAL, OR INSTITUTIONAL OCCUPANCIES AS DEFINED IN THE SAFETY STANDARD FOR REFRIGERATION SYSTEMS, ASHRAE 15.

SELECTING A LOCATION FOR YOUR NEW UNIT

The following conditions should be considered when selecting a location for your unit:

- Floor Load:** The area on which the unit will rest must be level, free of vibration, and suitably strong enough to support the combined weights of the unit plus the maximum product load weight. All casters must be in contact with the floor to support the weight. Casters may require shims in order for the caster to be in contact with the floor. NOTE: If there is a question pertaining to weight load limits, consult the factory at 1-888-994-7636.
- Ventilation:** The air cooled self contained unit requires a sufficient amount of cool clean air. Avoid surrounding your unit around other heat generating equipment and out of direct sunlight. Also, avoid locating in an unheated room or where the room temperature may drop below 70° F (21°C) or above 86°F (32°C). Do not place any object that can block the ventilation exhaust from the machine compartment register.
- Clearance:** This unit has the clearance requirements are as follows - 0 in. at the top, 0 in. at the rear and 0 in. at each side

INSTALLATION CHECKLIST

After the final location has been determined, refer to the following checklist prior to start-up:

- Check all exposed refrigeration lines to ensure that they are not kinked, dented, or rubbing together or rubbing against any steel.
- Check all visible components for any potential damage.
- Check that the condenser and evaporator fans rotate freely without striking any stationary members.
- Unit must be properly leveled; Check all legs or casters ensure they all are in contact with the floor while maintaining a level work surface. Adjusting bullet feet height or shimming casters may be necessary if the floor is not level. NOTE: Damage to equipment may result if not followed. Randell is not responsible for damage to equipment if improperly installed.
- Plug unit into power source. Unit will come on. If unit does not turn on, refer to controller operation section of this manual to manually turn on the unit.
- Allow unit time to cool down to holding temperature. If temperature adjustments are required, the control is located on the front panel. Confirm that the units is holding the desired temperature.

- If unit has drawers, check drawer to ensure the drawer slides freely and fully extends along with seating in the cabinet properly when closed.
- Refer to the front of this manual for serial number location. Please record this information in your manual on page 1 now. It will be necessary when ordering replacement parts or requesting warranty service.
- Allow your unit to operate for approximately 45 minutes before putting in food in the rail. Allow 2 hours for base of the unit to cool down to storage temperature, prior to loading product. NOTE: All motors are oiled and sealed.

ELECTRICAL SUPPLY

The wiring should be done by a qualified electrician in accordance with local electrical codes. A properly wired and grounded outlet will assure proper operation. Please consult the data tag attached to the compressor to ascertain the correct electrical requirements. Supply voltage and amperage requirements are located on the serial number tag located on the rear interior wall.

OPERATION

DAILY OPERATING INSTRUCTIONS

EASY MORNING STARTUP

- Turn on the condiment rail by pressing and holding the rail control power button until the LED display turns on. Let the unit cool for a minimum of 45 minutes.
- Load the product pans as needed. The loaded product should be 36°F or below for best results.

FOOD-SAFE OPERATIONS

- Closing the lids on the condiment rail during non-peak hours will extend the holding time of food product.
- The frost above the product pans may come and go during the day -- this is normal. The unit automatically regulates the rail temperature to keep your food safe and fresh.

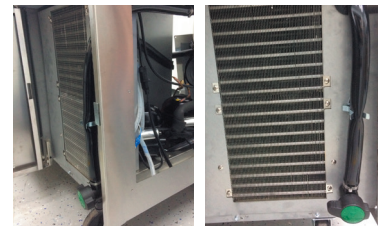
NIGHTLY ENERGY-SAVING SHUTDOWN

- Remove the product pans from the upper rail and place in the conveniently located base storage, or any other suitable cold-storage area.
- Turn off the condiment rail by pressing and holding the rail control power button until the LED display turns off.
- Remove any food "spillage" or debris, rinse and sanitize rail removing any excess water through the drain system located at the end of the unit into a suitable water tight container.
- Close the rail lid to minimize dust and debris contamination.
- The base will continue to operate normally and may be used for overnight storage.
This equipment is intended for use in rooms having an ambient temperature of 30°C/86°F or less. (NSF labeling requirement). Contact factory for Spanish instructions at 888.994.7636.

MECHANICAL COMPARTMENT

WARNING: BASE EVAPORATOR FANS ARE ALWAYS IN OPERATION WHEN THE UNIT IS ENERGIZED. DISCONNECT POWER TO THE UNIT PRIOR TO PERFORMING MAINTENANCE.

- To power on the base, press and hold the base control power button until the LED display turns on. To power on the rail, press and hold the rail control power button until the LED display turns on. The power controls are located above the louver panel.
- To power off the base press and hold the base control power button until the LED display turns off. To power off the rail press and hold the rail control power button until the LED display turns off. The power controls are located above the louver panel.
- The drain valve for the upper rail is found behind the hinged vented door. The rail may be drained by placing a pan under the drain valve and opening the valve. (See Evening Shut Down of Prep Rail).



MORNING STARTUP OF PREP RAIL

- Unit cleaning may be performed at this time.
- Turn on unit. See item 2 under the Mechanical Compartment section above for powering on the rail.
- Allow a minimum 45 minutes for your unit to cool down before loading product. A uniform frost pattern will appear on side walls and bottom of prep rail area.
- Load the product and proceed with food preparation. NOTE: Product entering unit must be at 35°F +/- 2°F.

EVENING SHUT DOWN OF PREP RAIL

1. Remove product from unit at the end of the day's preparation.
2. Turn off unit. See item 3 under the Mechanical Compartment section above for powering on the rail.
3. Unit cleaning may be performed at this time if the frost has melted off the surface.
4. Once defrosted, the rail drain may be opened to remove any water that has resulted from the defrosting procedure.






WARNING: IT IS RECOMMENDED TO ONLY MAKE CHANGES OF 2 DEGREE INCREMENTS AT A TIME. ALLOW FOR THE UNIT TO OPERATE 24 HOURS BETWEEN ADJUSTMENTS. IF THE 2 DEGREE ADJUSTMENT IS NOT ENOUGH ANOTHER ADJUSTMENT CAN BE MADE. IF THE SETTINGS NEED TO GO ABOVE OR BELOW THIS POINT THERE MAY BE OTHER CONTRIBUTING FACTORS AS TO THE CAUSE OF THE TEMPERATURE VARIANCES, PLEASE CONTACT THE FACTORY AT 1-800-621-8560.

AMBIENT CONDITIONS

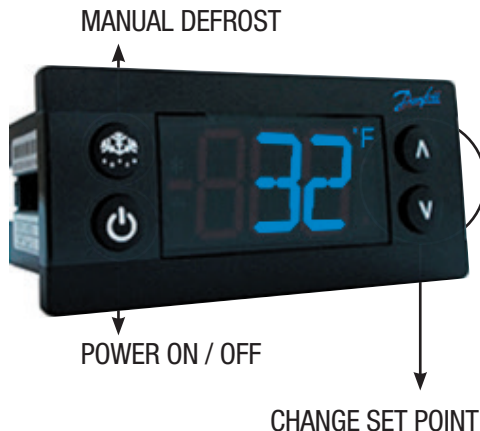
Unit is designed for normal operating temperatures between 70° F (21°C) - 86°F (32°C). Operating outside of those temperatures may cause premature product wear or failure.

Randell has attempted to preset the temperature control to ensure that your unit runs at an optimum temperature, but due to varying ambient conditions, including elevation, food type and your type of operation, you may need to alter this temperature using control adjustment until desired temperature is reached.

DANFOSS CONTROLLER OPERATION

| LED | FUNCTION |
|-------------------------------------------------------------------------------------|----------------------------------------------------|
|  | Compressor energized & Evaporator fan de-energized |
|  | Defrost in progress |
|  | Fans delay after defrost completion |
|  | Evaporator fan energize |
|  | An alarm is occurring |
| °C / °F | Temperature unit |

Note: The rail control display temperature is not the air temperature or the food temperature within the rail. Display may show a colder temperature than what's perceived in the rail. Base temperatures reflect the actual return air but closer represent the base air temperatures.



POWER ON / OFF: Press and hold the power button until LED display turns On / Off

MANUAL DEFROST: Press and hold "Defrost" Button

CHANGE SET POINT: To raise temperature

1. Press and hold "Λ" to access set point.
2. When set point start flashing, Press "Λ" to adjust set point.
3. After 30 seconds, the display automatically reverts to showing the current temperature.

CHANGE SET POINT: To lower temperature

1. Press and hold "v" to access set point.
2. When set point start flashing, Press "v" to adjust set point.
3. After 30 seconds, the display automatically reverts to showing the current temperature.

CHANGE FROM °F /°C :

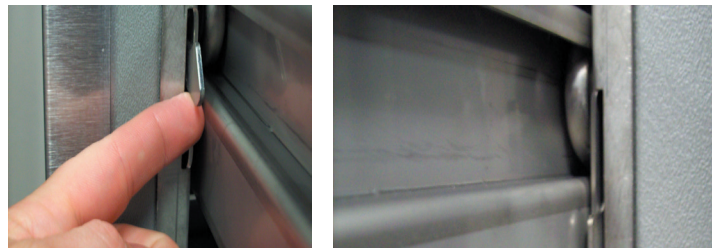
1. Press the up/down buttons simultaneously for 5 seconds to access the menu.
2. Password is requested. Password is 000.
3. Press the bottom left button to OK the password.
4. Using the up/down buttons, navigate to the "diS" level. Press the bottom left button to OK the selection.
5. Using the up/down buttons, navigate to the "CFu" level. Press the bottom left button to OK the selection.
 - a. "-F" designates Fahrenheit.
 - b. "-C" designates Celsius.
6. Press the top left button repeatedly to return to exit and return to the home screen.

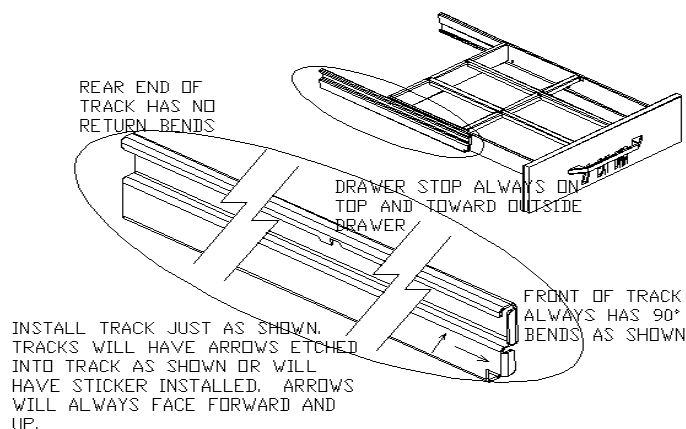
DRAINING THE RAIL

1. Open hinged mechanical compartment door
2. Place container under drain valve
3. Open valve until all water has drained
4. Close valve
5. Discard water

DRAWER REMOVAL

1. Fully extend the drawer that is to be removed.
2. Remove product pans from drawer.
3. Lift up the drawer stop tabs on each side of drawer track.
4. Pull drawer out while lifting the tabs.





DRAWER INSTALLATION

To remove and re-install individual drawers and drawer tracks, please refer to the figure above for proper installation instructions.

MAINTENANCE

WARNING: DO NOT USE SHARP UTENSILS AND/OR OBJECTS.

WARNING: DO NOT USE STEEL PADS, WIRE BRUSHES, SCRAPERS, OR CHLORIDE CLEANERS TO CLEAN YOUR STAINLESS STEEL.

CAUTION: DO NOT USE ABRASIVE CLEANING SOLVENTS, AND NEVER USE HYDROCHLORIC ACID (MURIATIC ACID) ON STAINLESS STEEL.

WARNING: DO NOT PRESSURE WASH EQUIPMENT AS DAMAGE TO ELECTRICAL COMPONENTS MAY RESULT.

Randell strongly suggests a preventive maintenance program which would include the following monthly, weekly, and daily procedures:

If a failure of the equipment is a direct result of any of the Preventative Maintenance guidelines being neglected, the repairs and parts replacements will not be covered under warranty.

It is recommended that the customer contact the local Authorized Service Agent to provide a quote to perform periodic Preventative Maintenance.

WEEKLY PM PROCEDURES

1. Clean all gaskets on a weekly if not daily basis with a solution of warm water and a mild detergent to extend gasket life. Do not use bleach for cleaning gaskets. Bleach will cause the gaskets to become brittle and not reach their normal life expectancy.
2. Clean and disinfect rail drains with a solution of warm water and mild detergent on a weekly basis. It is recommended to open and close the drain valve as the hot water is flowing through to clean any debris from the internal valve components.

MONTHLY PM PROCEDURES

1. Cleaning of all condenser coils on a monthly basis. Condenser coils are a critical component in the life of the compressor and must remain clean to assure proper air flow and heat transfer. Failure to maintain this heat transfer will affect unit performance and eventually destroy the compressor. Clean the condenser coils with coil cleaner and/or a vacuum, cleaner and brush. NOTE: Brush coil in direction of fins, normally vertically as to not damage or restrict air from passing through condenser.
2. Clean and disinfect drain lines and evaporator pan with a solution of warm water and mild detergent on a monthly basis. Remove clear plastic drain line from plastic tray of condensing unit and place pan under end of drain tube. Discard waste water from pan when cleaning is complete. Re-insert plastic drain tube into position on condensing unit.

3. Remove drawer tracks as per instructions on Drawer Installation guidelines. Once drawers are removed wipe away any debris buildup from the drawer tracks.

The roller bearings come lubricated from the factory. Excessive oils and or water may remove the oils. It may be required to add lithium grease from time to time on bearings that appear dry.

4. Inspect all silicone seams at interior of the rail and refrigerated base cabinet on a monthly basis. Re-apply food grade silicone sealant as needed to any seams where silicone has peeled away or cracked. Apply silicone to a clean dry surface. Allow sufficient drying time to assure best adhesion of sealant.

RECOMMENDED CLEANERS FOR YOUR STAINLESS STEEL INCLUDE THE FOLLOWING:

| JOB | CLEANING AGENT | COMMENTS |
|-----------------------------------------------|------------------------------------|------------------------------------------|
| Routine cleaning | Soap, ammonia, detergent Medallion | Apply with a sponge or cloth |
| Fingerprints and smears | Arcal 20, Lac-O-Nu, Ecoshine | Provides a barrier film |
| Stubborn stains and discoloration | Cameo, Talc, Zud, First Impression | Rub in the direction of the polish lines |
| Greasy and fatty acids, blood, burnt-on foods | Easy-Off, Degrease It, Oven Aid | Excellent removal on all finishes |
| Grease and Oil | Any good commercial detergent | Apply with a sponge or cloth |
| Restoration/Preservation | Benefit, Super Sheen | Good idea monthly |

Reference: Nickel Development Institute, Diversey Lever, Savin, Ecolab, NAFEM

Proper maintenance of equipment is the ultimate necessity in preventing costly repairs. By evaluating each unit on a regular schedule, you can often catch and repair minor problems before they completely disable the unit and become burdensome on your entire operation.

For more information on preventive maintenance, consult your local service company or CFESA member. Most repair companies offer this service at very reasonable rates to allow you the time you need to run your business along with the peace of mind that all your equipment will last throughout its expected life. These services often offer guarantees as well as the flexibility in scheduling or maintenance for your convenience. For a complete listing of current Randell ASA please visit www.unifiedbrands.net.

Randell believes strongly in the products it manufactures and backs those products with one of the best warranties in the industry. We believe with the proper maintenance and use, you will realize a profitable return on your investment and years of satisfied service.

REPLACEMENT PARTS

To order parts, contact your Authorized Service Agent. Supply the model designation, serial number, part description, part number, quantity, and when applicable, voltage and phase.

CONTACT US

If you have questions pertaining to the content in this manual, contact Randell at 888-994-7636.

TROUBLESHOOTING

This unit is designed to operate smoothly and efficiently if properly maintained. However, the following is a list of checks to make in the event of a problem. Wiring diagrams are found at the end of this manual. When in doubt, turn unit off and contact service at 888-994-7636.

| SYMPTOM | POSSIBLE CAUSE | PROCEDURE |
|-----------------------|------------------------------------|------------------------------------------|
| Unit does not run | No power to unit | Plug in unit |
| | Control in OFF position | Turn controller on |
| | Faulty control | Call for service at 888-994-7636 |
| Unit too cold | Incorrect set point | Adjust control set point |
| Unit too warm | Door / drawer ajar | Ensure door / drawer is fully closed |
| | Gasket torn or out of place | Inspect the gasket for wear and position |
| | Incorrect set point | Adjust control set point |
| | Warm product introduced to cabinet | Pre-chill product 37°F |
| | Ice on the coil | Initiate manual defrost |
| Unit noisy | Ice on the coil | Initiate manual defrost |
| Unit does not defrost | Excessive ice on the coil | Initiate manual defrost |

SERVICE

CAUTION: COMPONENT PARTS SHALL BE REPLACED WITH FACTORY OEM PARTS. SERVICE WORK SHALL BE DONE BY FACTORY AUTHORIZED SERVICE PERSONNEL, SO AS TO MINIMIZE THE RISK OF POSSIBLE IGNITION DUE TO INCORRECT PARTS OR IMPROPER SERVICE.

CAUTION: BEFORE MAKING ANY REPAIRS, ENSURE THE UNIT IS DISCONNECTED FROM ITS POWER SOURCE.

This piece of equipment uses a R290 Refrigeration system. This equipment has been clearly marked on the serial tag the type of refrigerant that is being used. There is also a warning labels stating that the unit contains R290 refrigerant. R290 is safe to use as long as you follow these warning labels.

No smoking or open flames when servicing this equipment. If needed, use a CO2 or powder type fire extinguisher.

Replacement parts used on any R290 Refrigeration system cabinet must have specific UL certification for non-sparking components.

Only authorized service technician, certified in R290 system should service this equipment.

MANIFOLD SET

A R134A manifold set can be used for servicing this equipment.

REFRIGERANT RECOVERY

Follow all national and local regulations for R-290 refrigerant recovery.

LEAKING CHECKING AND REPAIR

Leak check an R-290 system the same way you would an R-134a or R-404A system with the following exceptions.

1. Do not use a Halid leak detector on a R290 system.
2. Electronic leak detector must be designated specifically for combustible gas.

Use of a bubble solution or an ultrasonic leak detector are acceptable.

When repairing a leak, it is recommended using oxygen free dry nitrogen with a trace gas not exceeding 200PSI.

When accessing an R290 system, piercing valves are not to remain on the equipment in a permanent manner. After charge is recovered, Schrader valves are to be installed on the process stubs. Proper charge is to be weighed into the system and the system is to be leak checked afterwards.

The R290 equipment must have red process tubes and other devices through which the refrigerant is serviced, such as any service port. This color marking must remain on the equipment. If marking is removed, it must be replace and extend at least 2.5 centimeters (1") from the compressor.

CHARGING

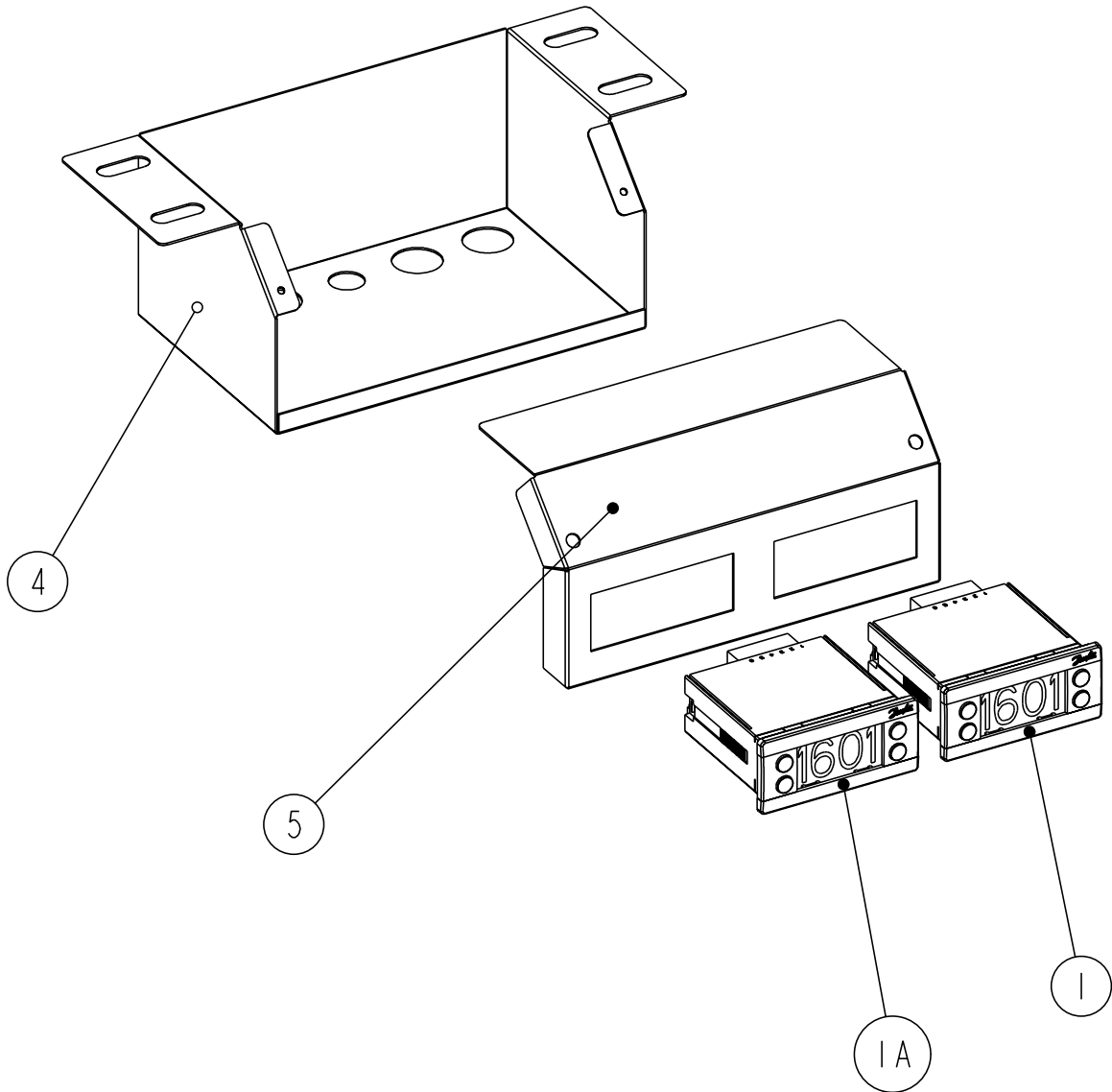
Follow the charge amount specified on the data tag. It is recommended to use the shortest hoses possible to prevent undercharging.

- Ensure the system is sealed and leak checked
- Evacuate system to a minimum 500 micron
- Weigh in correct charge
- Leak check the system again
- Bleed the refrigerant from the high side hose to the low side hose
- Disconnect the hoses
- Remove line taps

ELECTRICAL BOX

CALL FACTORY FOR REPLACEMENT PARTS:
888-994-7636

Parts List



| ITEM | SERVICE PART | DESCRIPTION |
|------|-----------------|------------------------------------------------------|
| 1 | RP CNT1804 | CONTOLLER, PROGRAMMED - RAIL - SGL COMPR SYSM |
| 1 | RP CNT1805 | CONTOLLER, PROGRAMMED - RAIL - DBL COMPR SYSM |
| 1A | RP CNT1806 | CONTOLLER, PROGRAMMED - BASE - SGL COMPR SYSM |
| 1A | RP CNT1807 | CONTOLLER, PROGRAMMED - BASE - DBL COMPR SYSM |
| 2* | EL WIR469A | CORD, 14 GA 18" FEMALE 000469-14 |
| 3* | EL WIR1703 | POWER CORD, 9' 16/3 W/90*-45* ANGLE PLUG (SJTO WIRE) |
| 4 | CONSULT FACTORY | BOX, ENCLOSURE |
| 5 | CONSULT FACTORY | BOX, FACE PLATE |
| 6* | RF CNT1602 | SENSOR, COIL |
| 7* | RF CNT1603 | SENSOR, AIR |
| 8* | RF CNT1801 | SENSOR, COIL - CLEAN COND |

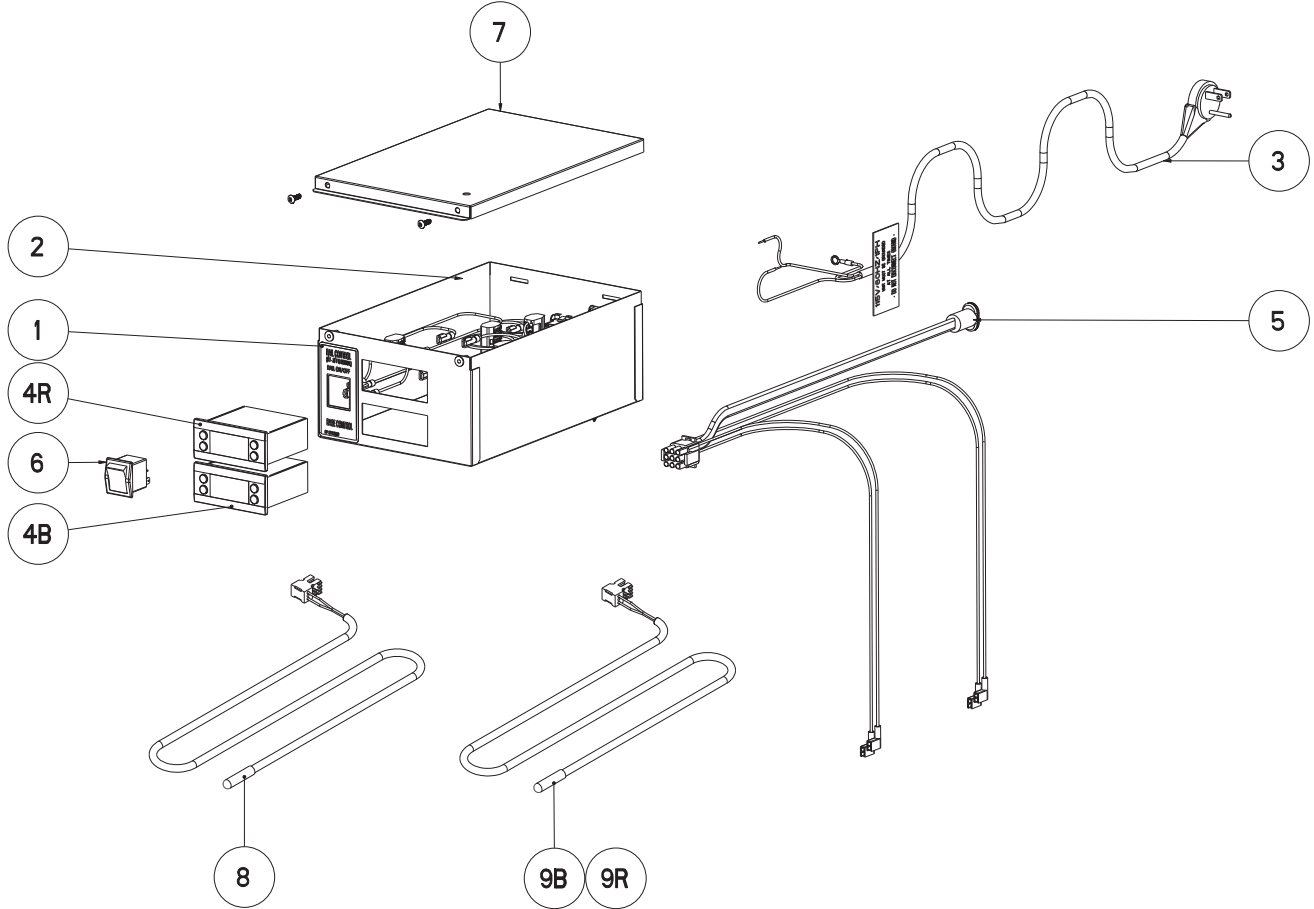
* = NOT SHOWN

**CONTROL BOX
SR BOX2103**

CALL FACTORY FOR REPLACEMENT PARTS:
888-994-7636

Parts List

2 COMPRESSORS – DUAL CIRCUIT CONDENSER - DANFOSS CONTROLS, START NOVEMBER 2022



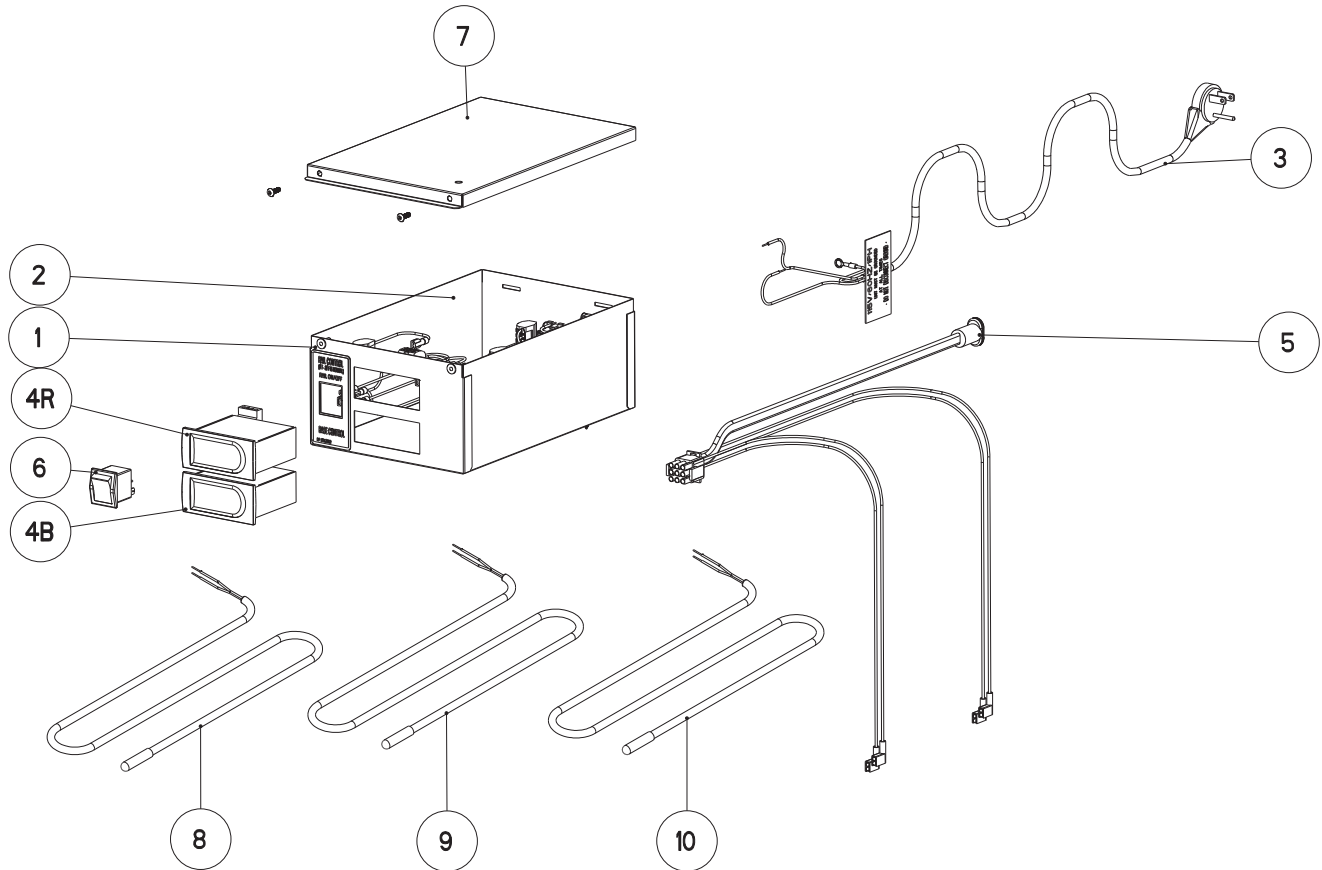
| ITEM | SERVICE PART | QUANTITY | DESCRIPTION |
|------|---------------|----------|-----------------------------------------------------------------------------------|
| 1 | SR BOX2103 | 1 | CONTROL BOX, REFRIGERATOR DUAL CIRCUIT CONDENSER ASSEMBLY DANFOSS CONTROLS |
| 2 | RP BOX2103_01 | 1 | CONTROL BOX DUAL CONTROL CONDENSER MOUNT 290 UNITS |
| 3 | EL WIR1703 | 1 | POWER CORD, 9' 16/3 W/90°-45° ANGLE PLUG (SJTO WIRE) |
| 4R | RP CNT1910RC | 1 | CONTROL ONLY, ERC112C , 8383-84111 RAIL CLEAN COND ALARM, PREPROGRAMMED |
| 4B | RP CNT1910BC | 1 | CONTROL ONLY, ERC112C , 8383-84111 BASE CLEAN COND ALARM, PREPROGRAMMED |
| 5 | SR HARNES2108 | 1 | HARNES, ASSEMBLY DUAL CIRCUIT COMPRESSORS, COND HEAT ELEMENT |
| 6 | EL SWT2001 | 1 | SWITCH, ROCKER, 125-250V, 16A |
| 7 | RP BOX2103_02 | 1 | COVER, DUAL CONTROL BOX COVER CONDENSER MOUNT R290 |
| 8 | RF CNT1602 | 1 | EVAPORATOR COIL SENSOR COIL BLUE |
| 9B | RF CNT1603 | 1 | EVAPORATOR COIL SENSOR AIR BLACK |
| 9R | RF CNT1603 | 1 | REFRIGERATOR RAIL SENSOR COIL BLACK |

**CONTROL BOX
SR BOX2103C**

**CALL FACTORY FOR REPLACEMENT PARTS:
888-994-7636**

Parts List

2 COMPRESSORS – DUAL CIRCUIT CONDENSER - CAREL CONTROLS, START NOVEMBER 2022



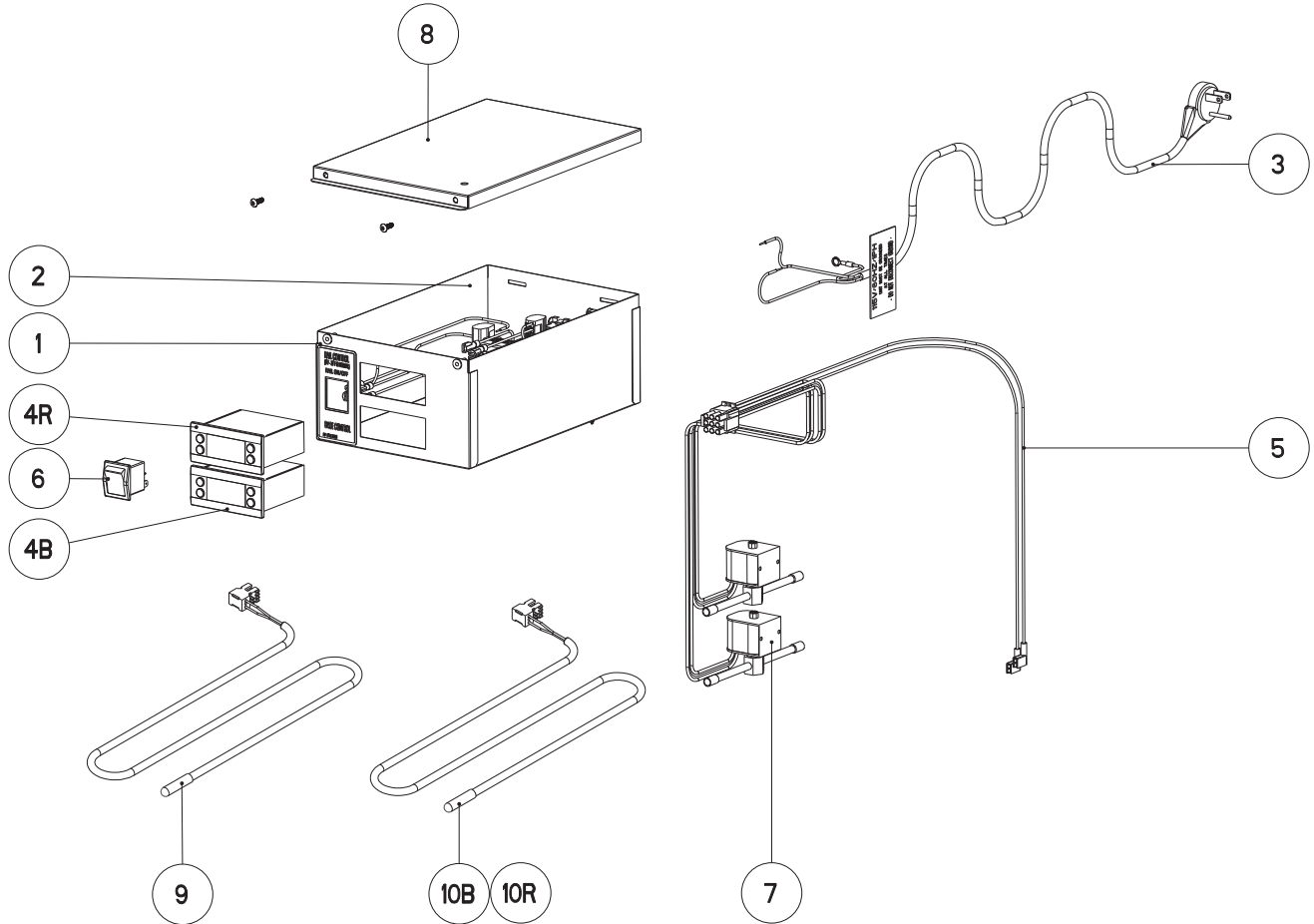
| ITEM | SERVICE PART | QUANTITY | DESCRIPTION |
|------|----------------|----------|-------------------------------------------------------------------------------------------------------------------------------------------------|
| 1 | SR BOX2103C | 1 | CONTROL BOX, REFRIGERATOR DUAL CIRCUIT CONDENSER ASSEMBLY CAREL CONTROLS |
| 2 | RP BOX2103_01 | 1 | CONTROL BOX DUAL CONTROL CONDENSER MOUNT 290 UNITS |
| 3 | EL WIR1703 | 1 | POWER CORD, 9' 16/3 W/90*-45* ANGLE PLUG (SJTO WIRE) |
| 4R | RP CNT2209RC | 1 | CONTROL ONLY, CAREL , DBL COMP RAIL CLEAN COND ALARM, PREPROGRAMMED RF PRG2209R |
| 4B | RP CNT2209BC | 1 | CONTROL ONLY, CAREL , DBL COMP BASE CLEAN COND ALARM, PREPROGRAMMED RF PRG2209B |
| 5 | SR HARNESS2108 | 1 | HARNESS, ASSEMBLY DUAL CIRCUIT COMPRESSORS, COND HEAT ELEMENT |
| 6 | EL SWT2001 | 1 | SWITCH, ROCKER, 125-250V, 16A |
| 7 | RP BOX2103_02 | 1 | COVER, DUAL CONTROL BOX COVER CONDENSER MOUNT R290 |
| 8 | RF CNT2104 | 1 | THERMISTOR, QTIP68B-90F-120, 120" BLUE THERMISTOR 10K OHM Q-CURVE BETA 3435, NO MOLEX CONNECTOR, BARE STRIPPED LEADS (EVAP) CAREL |
| 9 | RF CNT2103 | 1 | THERMISTOR, QTIP68-90F-120, 120" BLK THERMISTOR 10K OHM Q-CURVE BETA 3435, NO MOLEX CONNECTOR, BARE STRIPPED LEADS (AIR) CAREL |
| 10 | RF CNT2102 | 1 | THERMISTOR, QTIP68-90F-60, 60IN BLK THERMISTOR 10K OHM Q-CURVE BETA 3435, NO MOLEX CONNECTOR, BARE STRIPPED LEADS (RAIL) CAREL |

**CONTROL BOX
SR BOX2103S**

**CALL FACTORY FOR REPLACEMENT PARTS:
888-994-7636**

Parts List

SINGLE COMPRESSOR - DANFOSS CONTROLS, START NOVEMBER 2022



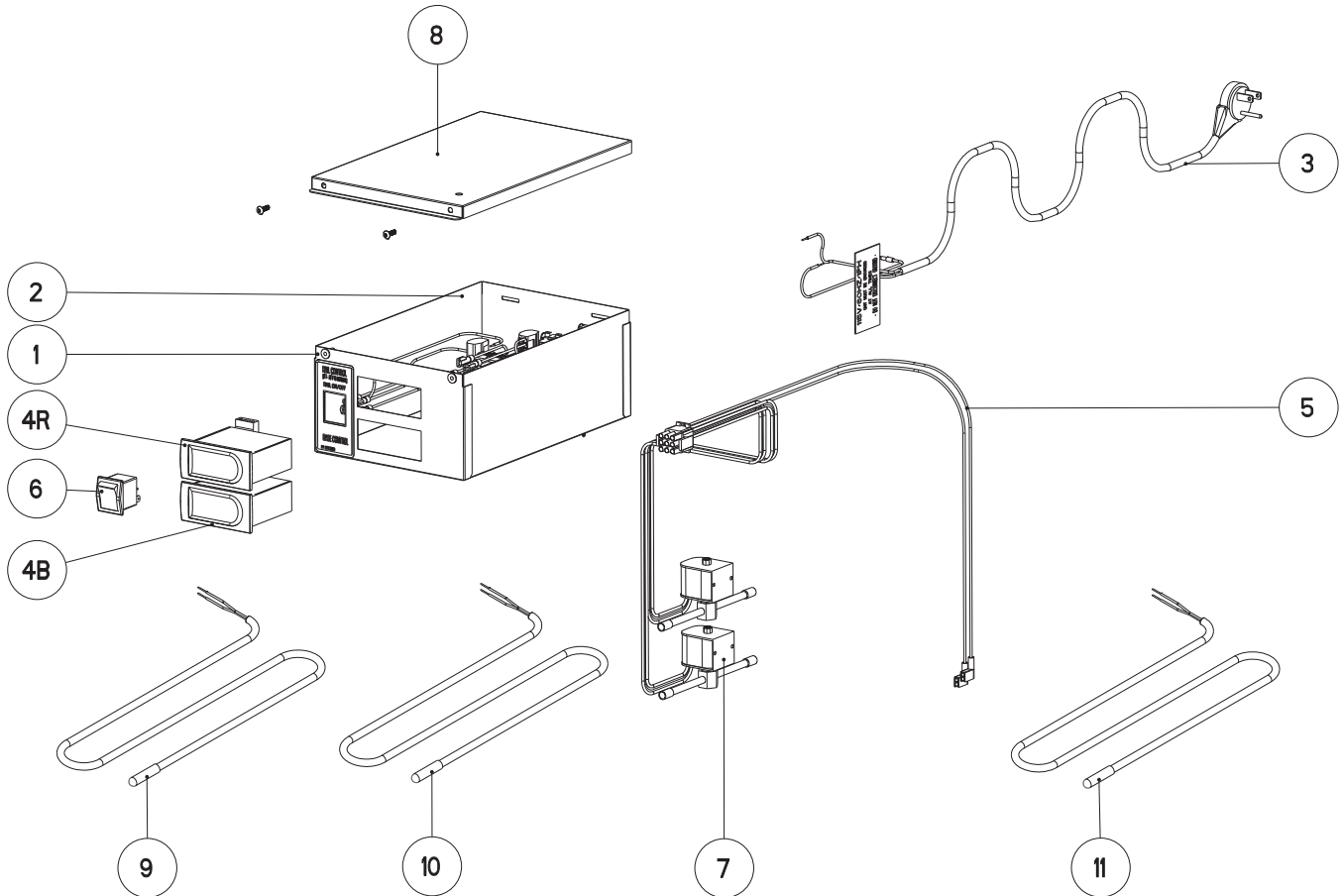
| ITEM | SERVICE PART | QUANTITY | DESCRIPTION |
|------|----------------|----------|---------------------------------------------------------------------------------|
| 1 | SR BOX2103S | 1 | CONTROL BOX, CUSTOM REFRIG SINGLE COMP, COND COIL, DANFOSS CNTR ASSEMBLY |
| 2 | RP BOX2103_01 | 1 | CONTROL BOX DUAL CONTROL CONDENSER MOUNT 290 UNITS |
| 3 | EL WIR1703 | 1 | POWER CORD, 9' 16/3 W/90*-45* ANGLE PLUG (SJTO WIRE) |
| 4R | RP CNT1720RC | 1 | CONTROL ONLY, 8148-8268 RAIL, ERC112C, PREPROGRAMMED |
| 4B | RP CNT1908BC | 1 | CONTROL ONLY, 8148-8268 BASE CLEAN CONDENSER ALARM, ERC112C PREPROGRAMMED |
| 5 | SR HARNESS2112 | 1 | HARNESS, ASSEMBLY SINGLE COMPRESSOR, RAIL AND BASE SOLENOIDS |
| 6 | EL SWT2001 | 1 | SWITCH, ROCKER, 125-250V, 16A |
| 7 | RF SOL9801 | 2 | SOLENOID, VALVE & 120V COIL 063455 ALCO 50RBT22SML N* |
| 8 | RP BOX2103_02 | 1 | COVER, DUAL CONTROL BOX COVER CONDENSER MOUNT R290 |
| 9 | RF CNT1602 | 1 | EVAPORATOR COIL SENSOR COIL BLUE |
| 10B | RF CNT1603 | 1 | EVAPORATOR COIL SENSOR AIR BLACK |
| 10R | RF CNT1603 | 1 | REFRIGERATOR RAIL SENSOR COIL BLACK |

**CONTROL BOX
SR BOX2103SC**

CALL FACTORY FOR REPLACEMENT PARTS:
888-994-7636

Parts List

SINGLE COMPRESSOR - CAREL CONTROLS, START NOVEMBER 2022



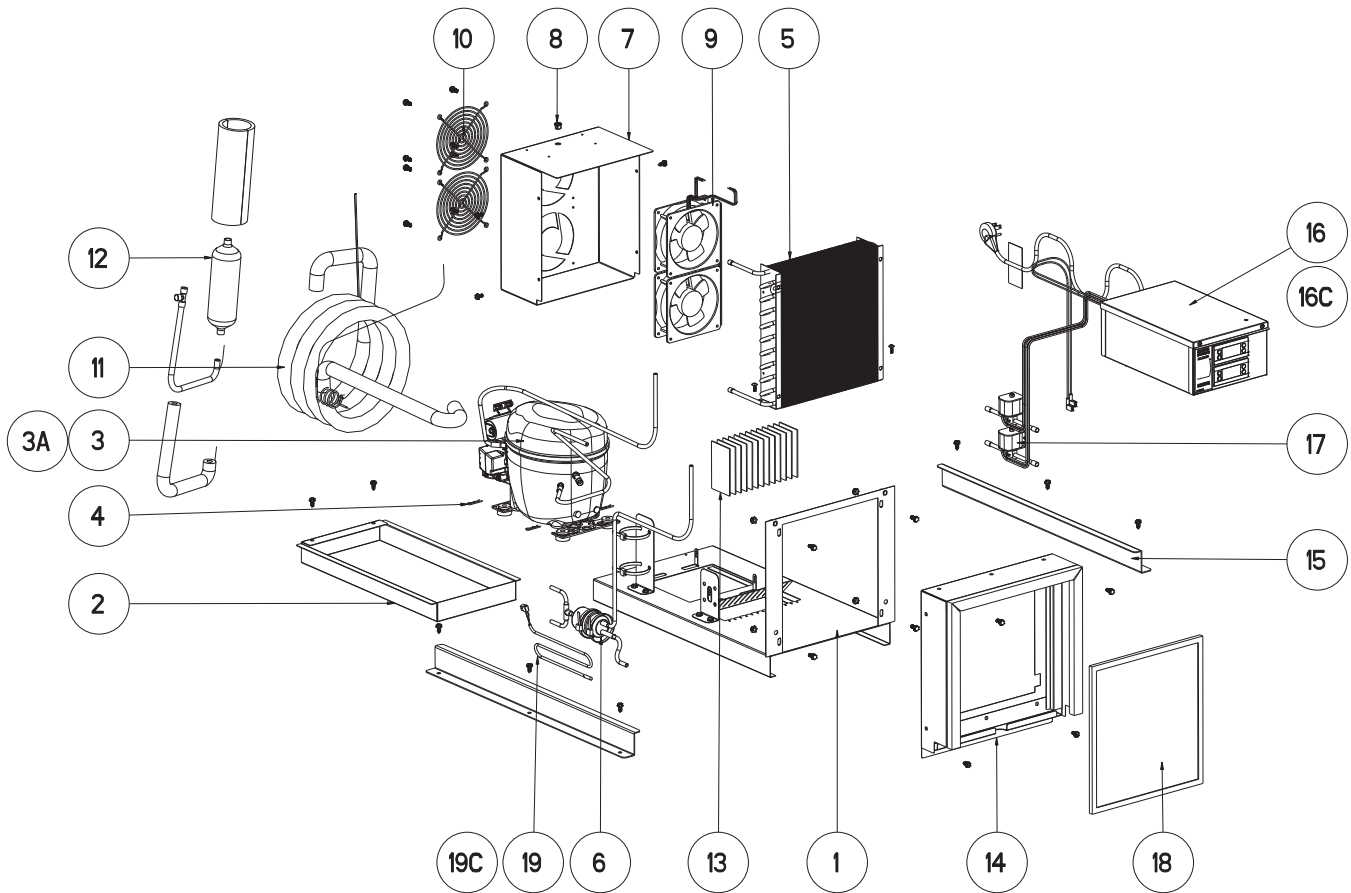
| ITEM | SERVICE PART | QUANTITY | DESCRIPTION |
|------|----------------|----------|-------------------------------------------------------------------------------------------------------------------------------------------------|
| 1 | SR BOX2103SC | 1 | CONTROL BOX, CUSTOM REFRIG SINGLE COMP, COND COIL, CAREL CNTR ASSEMBLY |
| 2 | RP BOX2103_01 | 1 | CONTROL BOX DUAL CONTROL CONDENSER MOUNT 290 UNITS |
| 3 | EL WIR1703 | 1 | POWER CORD, 9' 16/3 W/90*-45* ANGLE PLUG (SJTO WIRE) |
| 4R | RP CNT2204RC | 1 | CONTROL ONLY, CAREL , 148-8268 RAIL, PZUAC0E520, PREPROGRAMMED RF PRG2204R |
| 4B | RP CNT2208BC | 1 | CONTROL ONLY, CAREL , 8148-8268 BASE CLEAN CONDENSER ALARM, PZUAC0E520, PREPROGRAMMED RF PRG2208B |
| 5 | SR HARNESS2112 | 1 | HARNESS, ASSEMBLY SINGLE COMPRESSOR, RAIL AND BASE SOLENOIDS |
| 6 | EL SWT2001 | 1 | SWITCH, ROCKER, 125-250V, 16A |
| 7 | RF SOL9801 | 2 | SOLENOID, VALVE & 120V COIL 063455 ALCO 50RBT22SML N* |
| 8 | RP BOX2103_02 | 1 | COVER, DUAL CONTROL BOX COVER CONDENSER MOUNT R290 |
| 9 | RF CNT2104 | 1 | THERMISTOR, QTIP68B-90F-120, 120" BLUE THERMISTOR 10K OHM Q-CURVE BETA 3435, NO MOLEX CONNECTOR, BARE STRIPPED LEADS (EVAP) CAREL |
| 10 | RF CNT2103 | 1 | THERMISTOR, QTIP68-90F-120, 120" BLK THERMISTOR 10K OHM Q-CURVE BETA 3435, NO MOLEX CONNECTOR, BARE STRIPPED LEADS (AIR) CAREL |
| 11 | RF CNT2102 | 1 | THERMISTOR, QTIP68-90F-60, 60in BLK THERMISTOR 10K OHM Q-CURVE BETA 3435, NO MOLEX CONNECTOR, BARE STRIPPED LEADS (RAIL) CAREL |

**MECHANICAL COMPARTMENT
SR RPKGCUST-SGL-290**

CALL FACTORY FOR REPLACEMENT PARTS:
888-994-7636

Parts List

SINGLE COMPRESSOR, START NOVEMBER 2022



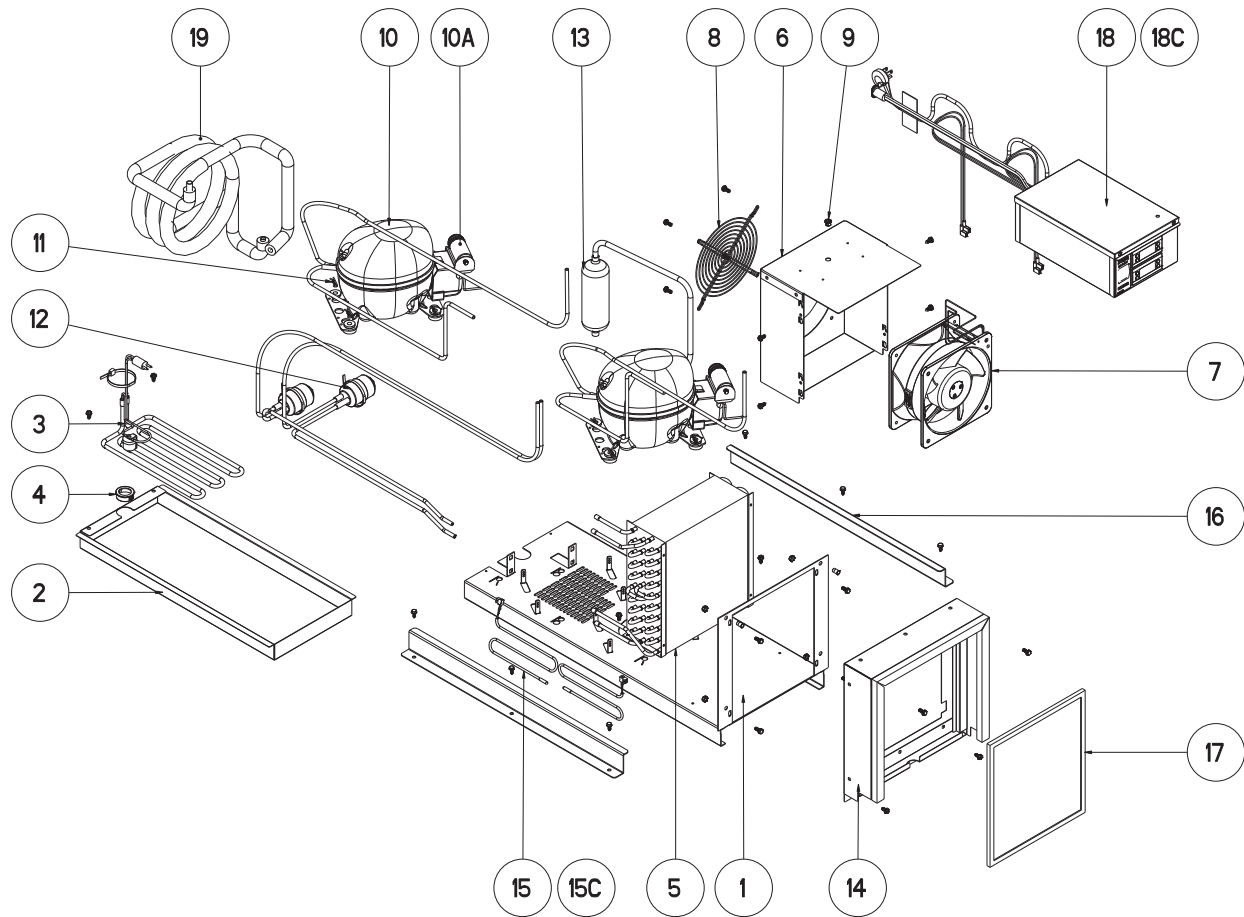
| ITEM | SERVICE PART | QUANTITY | DESCRIPTION |
|------|--------------|----------|--------------------------------------------------------------------------------------------------------------------------------------------------------------------|
| 1 | RP RPKG 40CU | 1 | MOUNT, COMPRESSOR STAND ASSY, SNGL CMPR,290 |
| 2 | RP RPKG 46 | 1 | DRAIN PAN, SGL CPMR, 290 |
| 3 | RF CMP1702 | 1 | COMPRESSOR, 1/3HP R290 120V/60HZ EMBRACO FFU130UAX |
| 3A | RF CMP1702SC | 1 | START COMPONENTS COMPRESSOR, 1/3HP R290 120V/60HZ EMBRACO FFU130UAX |
| 4 | HD PIN0601 | 4 | PIN, HAIR COTTER, WIRE .072D L=1-1/8" ZINC PLATED |
| 5 | RF COI1603 | 1 | COIL, 3.46" X 9.00" X 5.90"CONDENSER |
| 6 | RF FLT251 | 1 | FILTER DRYER |
| 7 | RP RPKG 47 | 1 | SHROUD, FAN - SINGLE CUSTOM 290 |
| 8 | EL GRM375 | 1 | GROMMET, HOLE 3/8 2030 SB375-4 (MP-SB03754) N* |
| 9 | RF FAN1401 | 2 | FAN, AXIAL, 119 X 38MM, OPER/TEMP RANGE -30C-+70C,115V-50/60 |
| 10 | RF FAN0703 | 2 | FAN GUARD, NICKEL CHROME FINISH WIRE 116MM RND |
| 11 | SR WRP2202 | 1 | WRAP, INSUL, 3/8" (85") COPPER, 0.059ID X 0.112 CAP, 132" LONG |
| 12 | RF ACM1801 | 1 | ACCUMULATOR, 3/8" DIA X 7" LONG |
| 13 | HD WCK1702 | 13 | PAD, WICKING, 7" X 3" X 1/16" FOR COND. PAN, MATERIAL-CRANEGLAS 232 |
| 14 | RP RPKG 34 | 1 | CONDENSING UNIT SHROUD, DBL COMP, DUAL COND |
| 15 | RP RPKG 36 | 2 | BRACKET, CONDENSING UNIT MOUNTING SLIDING |
| 16 | SR BOX2103S | 1 | CONTROL BOX, CUSTOM REFRIG SINGLE COMP, COND COIL, DANFOSS CNTR ASSEMBLY |
| 16C | SR BOX2103SC | 1 | CONTROL BOX, CUSTOM REFRIG SINGLE COMP, COND COIL, CAREL CNTR ASSEMBLY |
| 17 | RF SOL9801 | 2 | SOLENOID, VALVE & 120V COIL 063455 ALCO 50RBT22SML N* |
| 18 | HD FLT0902 | 1 | 9 1/2" X 11" ALUMINUM FILTER |
| 19 | RF CNT1801 | 1 | PROBE, COND COIL, YELLOW, CFA-290 FOR DANFOSS CONTROLS CLEAN CONDENSER |
| 19C | RF CNT2102 | 1 | THERMISTOR, QTIP68-90F-60, 60in BLK THERMISTOR 10K OHM Q-CURVE BETA 3435, NO MOLEX CONNECTOR, BARE STRIPPED LEADS (RAIL) FOR CAREL CONTROLS CLEAN CONDENSER |

**MECHANICAL COMPARTMENT
SR RPKGCUST-DCC-290**

CALL FACTORY FOR REPLACEMENT PARTS:
888-994-7636

Parts List

2 COMPRESSORS – DUAL CIRCUIT CONDENSER, START NOVEMBER 2022

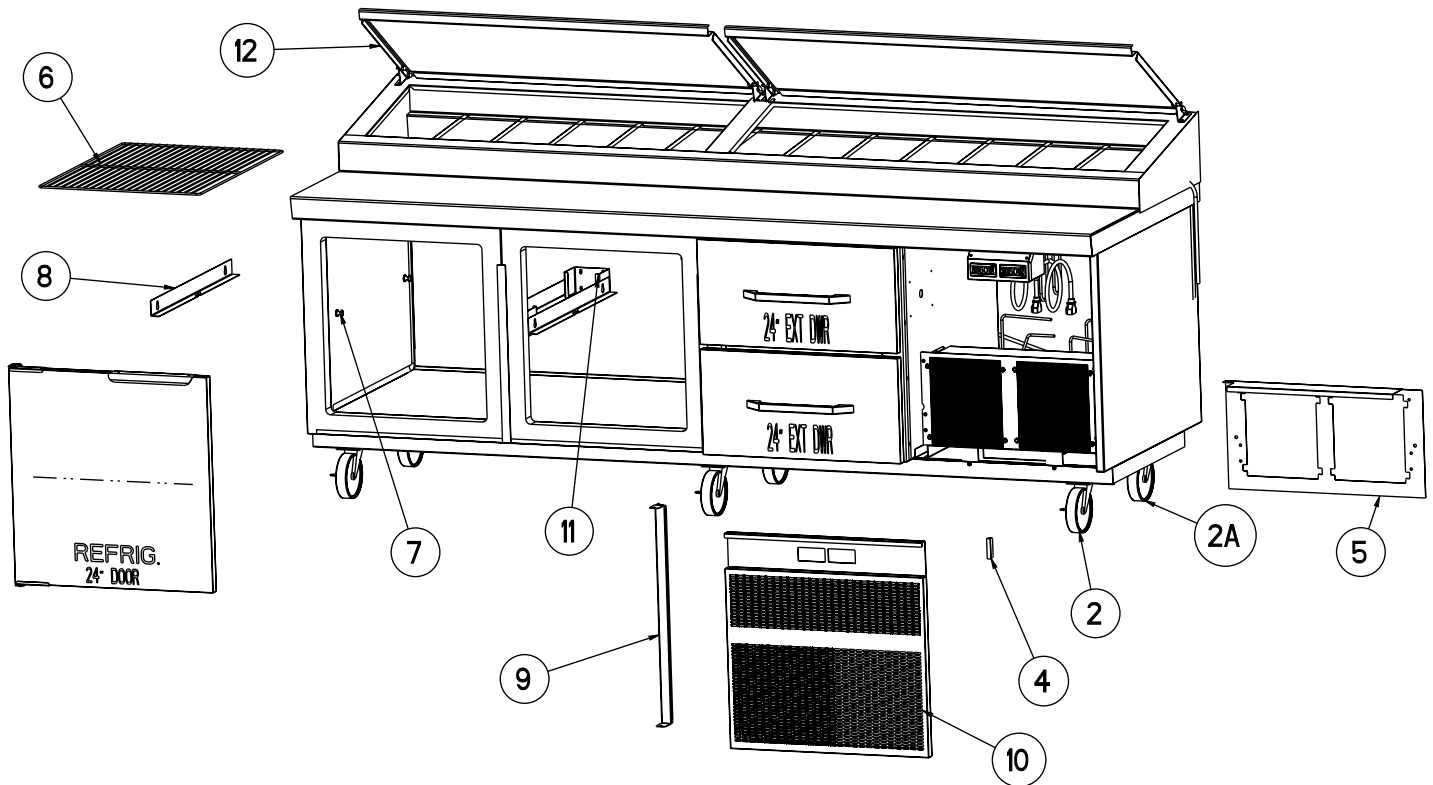


| ITEM | SERVICE PART | QUANTITY | DESCRIPTION |
|------|--------------|----------|--------------------------------------------------------------------------------------------------------------------------------------------------------------------|
| 1 | RP RPKG 32 | 1 | MOUNT, CMPR STAND, DUAL COND, DBL CMPR CUSTOM |
| 2 | RP RPKG 33 | 1 | DRAIN PAN, DBL CMPR, DUAL COND, R290 |
| 3 | EL WIR274 | 1 | ELEMENT, 115V 200W EVAP. 000274 N |
| 4 | EL GRM125 | 1 | GROMMET, 1-1/4" BLACK (SB1250-15) |
| 5 | RF COI2001 | 1 | COIL, EVAPORATOR DUAL CIRCUIT 8.5" X 10" X 3.5" |
| 6 | RP RPKG 30 | 1 | SHROUD, COND FAN, DBL CIRCUIT CONDENSER COIL |
| 7 | RF FAN1901 | 1 | FAN, AXIAL W/ LEAD, 180X180MM, 460 CFM 115V |
| 8 | HD GRD1909 | 1 | GUARD, FAN, MG-18, USE WITH RF FAN1901 |
| 9 | EL GRM375 | 1 | GROMMET, HOLE 3/8 2030 SB375-4 (MP-SB03754) N* |
| 10 | RF CMP1604 | 2 | COMPRESSOR, 1/4HP, R290, EMBRACO, 115V-60HZ, EM2X3125U |
| 10A | RF CMP1604SC | 2 | START COMPONENTS COMPRESSOR, 1/4HP, R290, EMBRACO, 115V-60HZ, EM2X3125U |
| 11 | HD PIN0601 | 8 | PIN, HAIR COTTER, WIRE .072D L=1-1/8" ZINC PLATED |
| 12 | RF FLT9902 | 2 | DRYER, 1/4x.042 FILTER EKP-032 SC DBL INL CAP TUBE N* |
| 13 | RF ACM1801 | 1 | ACCUMULATOR, 3/8" DIA X 7" LONG |
| 14 | RP RPKG 34 | 1 | CONDENSING UNIT SHROUD ASSEMBLY, DBL COMP, DUAL COND |
| 15 | RF CNT1801 | 2 | PROBE, COND COIL, YELLOW, CFA-290 FOR DANFOSS CONTROLS CLEAN CONDENSER |
| 15C | RF CNT2102 | 2 | THERMISTOR, QTIP68-90F-60, 60in BLK THERMISTOR 10K OHM Q-CURVE BETA 3435, NO MOLEX CONNECTOR, BARE STRIPPED LEADS (RAIL) FOR CAREL CONTROLS CLEAN CONDENSER |
| 16 | RF RPKG 36 | 2 | BRACKET, CONDENSING UNIT MOUNTING SLIDING |
| 17 | HD FLT0902 | 1 | 9 1/2" X 11" ALUMINUM FILTER |
| 18 | SR BOX2103 | 1 | CONTROL BOX, REFRIGERATOR DUAL CIRCUIT CONDENSER ASSEMBLY DANFOSS CONTROLS |
| 18C | SR BOX2103C | 1 | CONTROL BOX, REFRIGERATOR DUAL CIRCUIT CONDENSER ASSEMBLY CAREL CONTROLS |
| 19 | SR WRP2201 | 1 | WRAP, INSUL, 3/8" (54") X 3/8" (85") COPPER, 0.044 X 0.093 CAP, 132" LONG |

BASE UNIT

CALL FACTORY FOR REPLACEMENT PARTS:
888-994-7636

Parts List



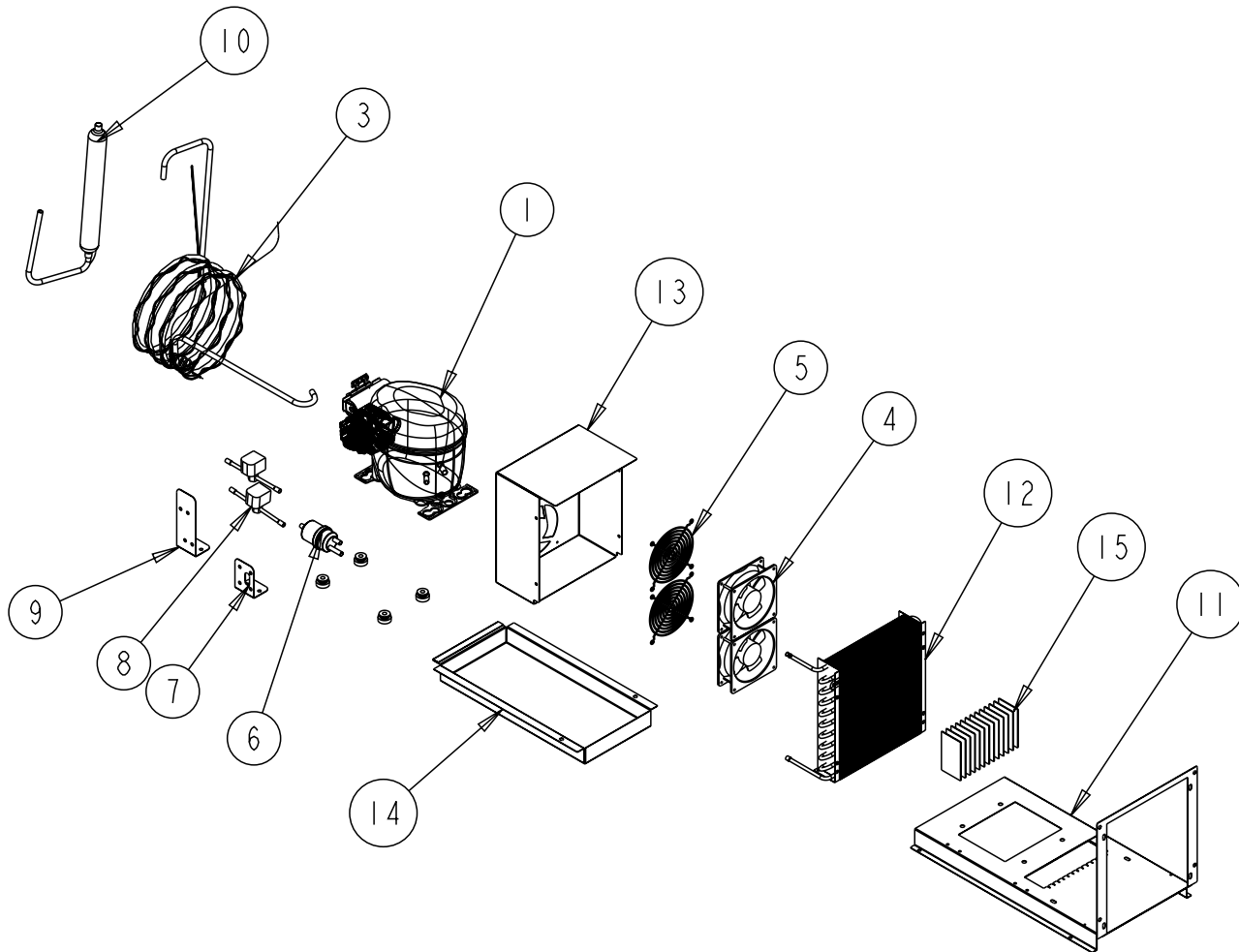
| ITEM | SERVICE PART | DESCRIPTION |
|------|-----------------|----------------------------------------|
| 1* | HD LEG9902 | 6" LEG W/ BULLET FOOT |
| 2 | HD CST060 | 6" CASTERS W/ BRAKE |
| 2A | HD CST061 | 6" CASTERS W/O BRAKE |
| 3* | HD CST040HD | 4" CASTERS W/ BRAKE |
| 3A* | HD CST041HD | 4" CASTERS W/O BRAKE |
| 4 | HD CTH9901 | LOUVER MAGNET |
| 5 | CONSULT FACTORY | SHROUD, COND UNIT |
| 6 | HD SHL9912 | SHELF 16.15" X 25" (21" DOOR) |
| 6 | HD SHL160 | SHELF 19" X 25" (24" DOOR) |
| 6 | HD SHL180 | SHELF 22" X 25" (27" DOOR) |
| 7 | HD PIN001 | SHELF SUPPORT PIN |
| 8 | RP SPT007 | SHELF SUPPORT |
| 9 | CONSULT FACTORY | LOUVER MOUNTING HINGE BRACKET |
| 10 | CONSULT FACTORY | LOUVER, HINGED |
| 11 | RP BRK0108 | SHELF SUPPORT BETWEEN DOORS |
| 12 | CONSULT FACTORY | COVER, HOOD--HINGED--SLIDING--LIFT OFF |

* = NOT SHOWN

**MECH COMPARTMENT -
SINGLE COMPRESSOR**

**CALL FACTORY FOR REPLACEMENT PARTS:
888-994-7636**

Parts List



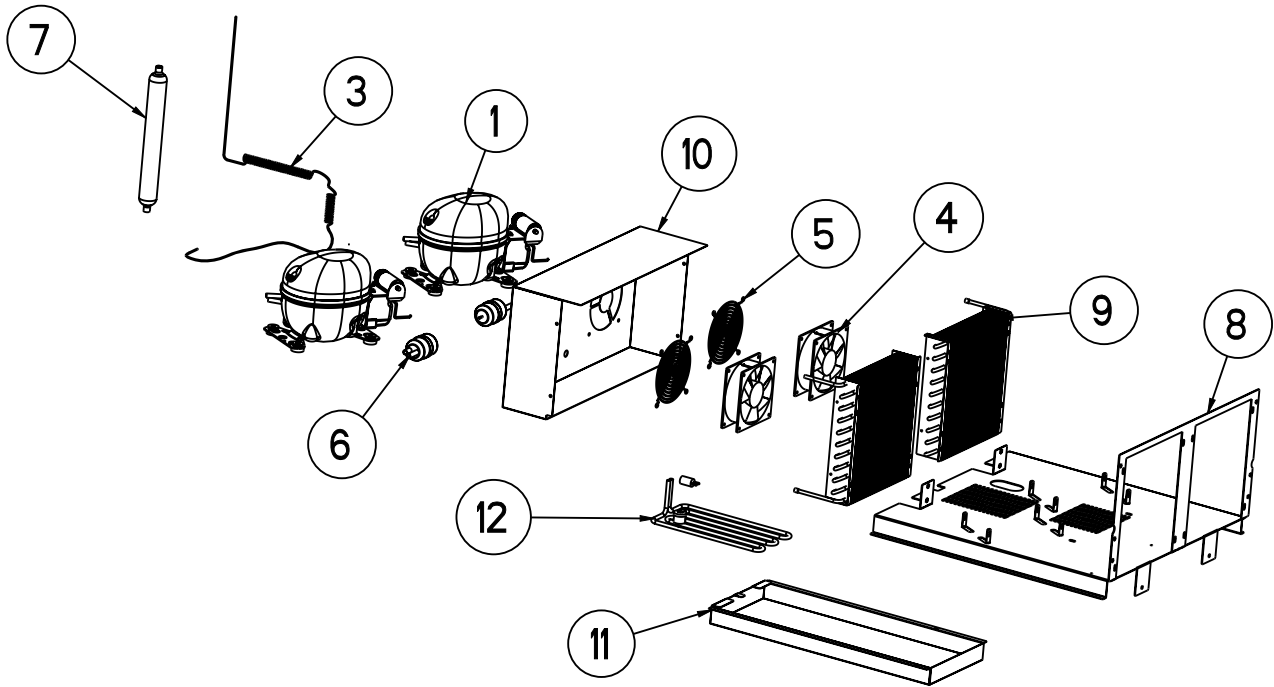
| ITEM | SERVICE PART | DESCRIPTION |
|------|--------------|--------------------------------------------|
| 1 | RF CMP1702 | COMPRESSOR, 1/3HP, R290, EMBRACO 115V-60HZ |
| 2* | RF CMP1702SC | COMPRESSOR, START COMPONENTS |
| 3 | RP CAP1801 | CAP, TUBE - RAIL |
| 4 | RF FAN1401 | CONDENSER FAN |
| 5 | RF FAN0703 | FAN GUARD |
| 6 | RF FLT251 | FILTER DRIER, 1/4" DBL INLET |
| 7 | RP BRK1720 | MOUNTING CLIP, FILTER DRIER (T07-1167) |
| 8 | RF SOL9801 | SOLENOID VALVE |
| 9 | RP BRK1812 | BRACKET, SOLENOID VALVE (T07-1173) |
| 10 | RF ACM1702 | ACCUMULATOR |
| 11 | RP MNT1802 | COMPRESSOR ASM STAND |
| 12 | RF COI1603 | CONDENSER COIL |
| 13 | RP SHD1809 | CONDENSER FAN SHROUD (T07-1179) |
| 14 | RP CPN1802 | DRAIN PAN - (T07-1146) |
| 15 | HD WCK1702 | PAD, WICKING |

* = NOT SHOWN

**MECH COMPARTMENT -
DOUBLE COMPRESSOR**

CALL FACTORY FOR REPLACEMENT PARTS:
888-994-7636

Parts List



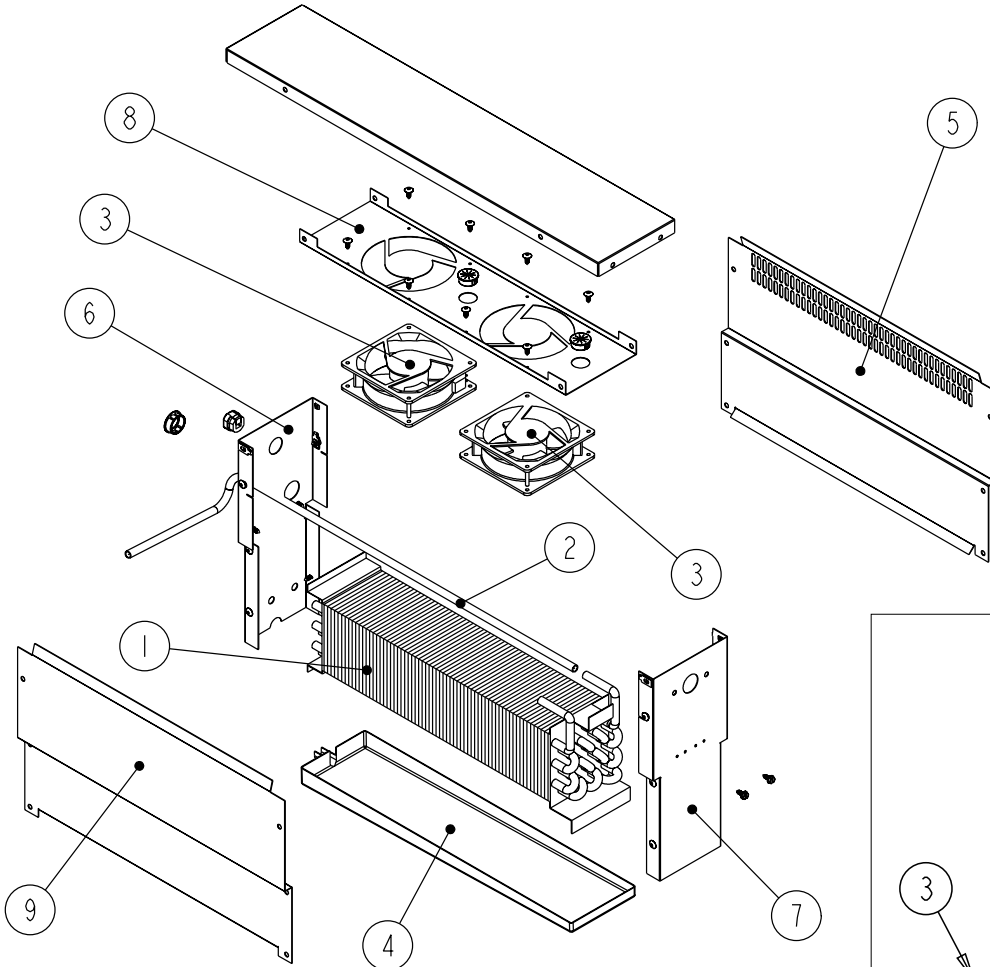
| ITEM | SERVICE PART | DESCRIPTION |
|------|-----------------|--------------------------------------------|
| 1 | RF CMP1604 | COMPRESSOR, 1/4HP, R290, EMBRACO 115V-60HZ |
| 2* | RF CMP1604SC | COMPRESSOR, START COMPONENTS |
| 3 | RP CAP1802 | CAP, TUBE - RAIL |
| 4 | RF FAN0601 | CONDENSER FAN |
| 5 | HD GR1610 | FAN GUARD |
| 6 | RF FLT251 | FILTER DRIER, 1/4" DBL INLET |
| 7 | RF ACM1702 | ACCUMULATOR |
| 8 | CONSULT FACTORY | COMPRESSOR ASM STAND (T07-1166D) |
| 9 | RF COI1603 | CONDENSER COIL |
| 10 | RP SHD1404 | CONDENSER FAN SHROUD (T07-1188) |
| 11 | RP CPN1803 | DRAIN PAN - (T07-1170) |
| 12 | EL WIR274 | HEATER, DRAIN PAN |
| 13* | EL WIR470 | POWER CORD, 16GA 2" MALE |

* = NOT SHOWN

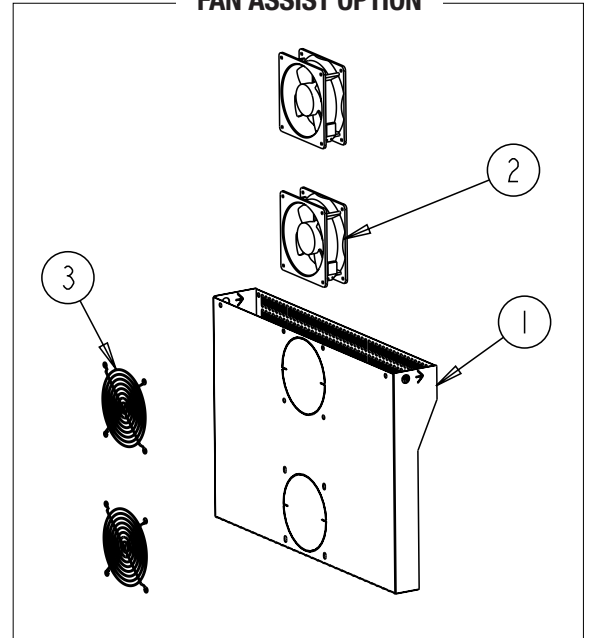
EVAPORATOR COIL

CALL FACTORY FOR REPLACEMENT PARTS:
888-994-7636

Parts List



FAN ASSIST OPTION



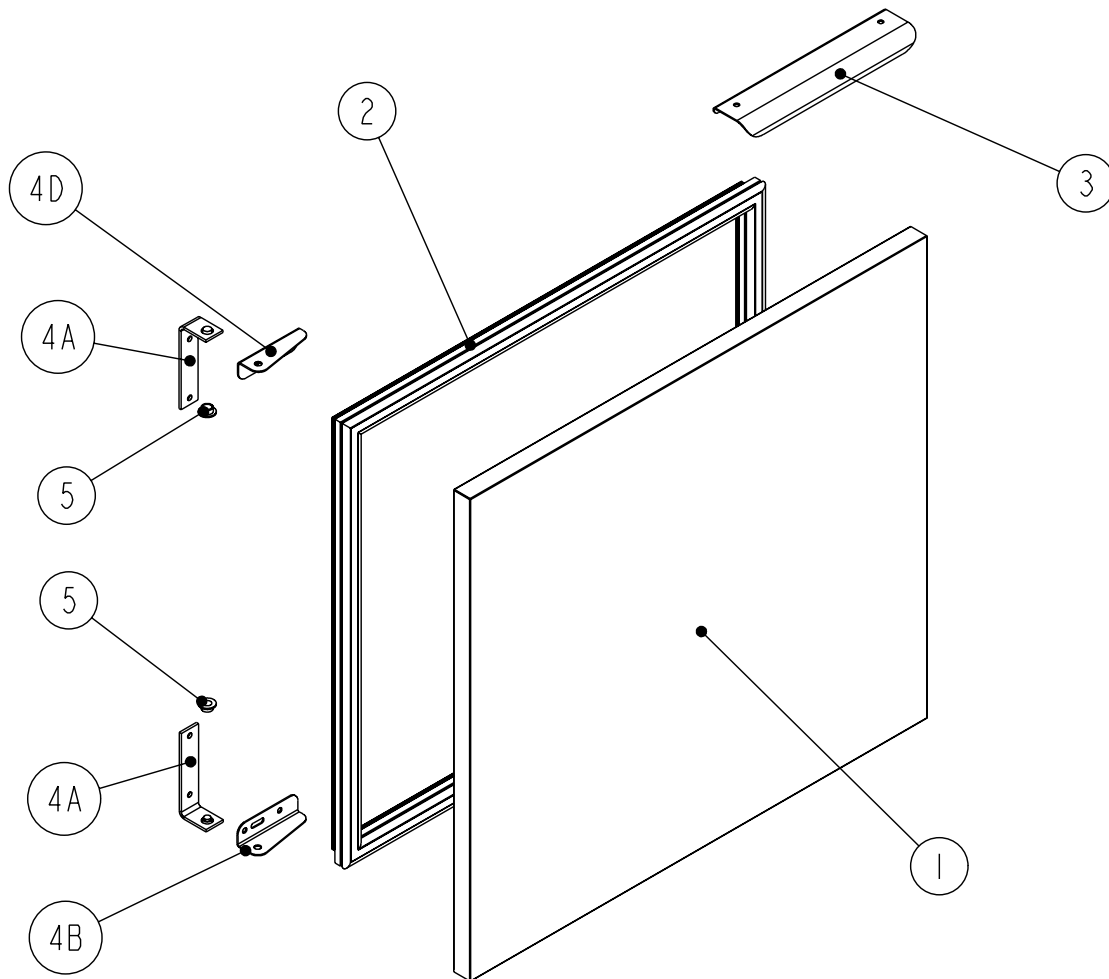
| ITEM | SERVICE PART | DESCRIPTION |
|--------------------------|--------------|------------------------------------|
| 1 | RF COI107 | EVAPORATOR COIL |
| 2 | RP CAP1803 | CAP, TUBE - BASE - SGL COMP SYSTEM |
| 2A | RP CAP1804 | CAP, TUBE - BASE - DBL COMP SYSTEM |
| 3 | RF FAN1401 | FAN, EVAPORATORS |
| 4 | RP DRP107 | EVAPORATOR DRAIN PAN |
| 5* | EL LGT1805 | LIGHT, LED, EDISON BASE, 6W-120V |
| 6* | EL LGT360 | LIGHT, SOCKET |
| FAN ASSIST OPTION | | |
| 1 | RP FAN1801 | FAN ASSIST ASSY |
| 2 | RF FAN1401 | FAN ASSIST MOTOR |
| 3 | RF FAN0702 | FAN ASSIST FAN GUARD |

* = NOT SHOWN

DOOR ASSEMBLY

CALL FACTORY FOR REPLACEMENT PARTS:
888-994-7636

Parts List



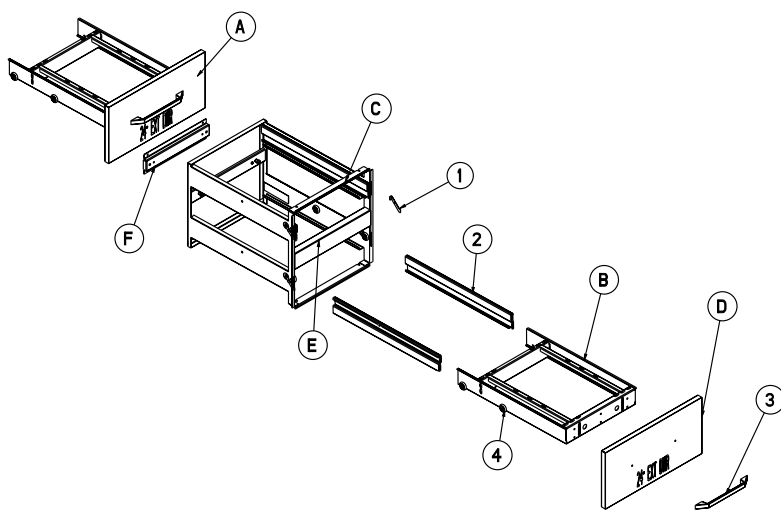
| ITEM | SERVICE PART | DESCRIPTION | NPR /WPR | NPO/WPO | LPNPO / LPWPO 18" HGH |
|------|--------------|-------------------------------------------|----------|---------|-----------------------------|
| 1 | RP DOR0012 | DOOR HINGED LEFT, 21" | X | X | - |
| 1A | RP DOR0012 | DOOR HINGED RIGHT, 21" | X | X | - |
| 2 | IN GSK1006 | GASKET, 18.5" X 22.5" PUSH IN (21" DOOR) | X | X | - |
| 1B | RP DOR0015 | DOOR HINGED LEFT, 24" | X | X | - |
| 1C | RP DOR0017 | DOOR HINGED RIGHT, 24" | X | X | - |
| 2A | IN GSK1010 | GASKET, 21.75" X 22.5" PUSH IN (24" DOOR) | X | X | - |
| 1D | RP DOR0016 | DOOR HINGED LEFT, 27" | X | X | - |
| 1E | RP DOR0017 | DOOR HINGED RIGHT, 27" | X | X | - |
| 2B | IN GSK1015 | GASKET, 24.5" X 22.5" PUSH IN (27" DOOR) | X | X | - |
| 3 | RP HDL037 | DOOR HANDLE | X | X | - |
| 4 | RP HNG9900 | HINGE ASSY, UNIVERSAL, LEFT/RIGHT | X | X | - |
| 5 | HD BSH050 | BUSHING, NYLON DOOR | X | X | - |
| 1F | RP DOR19L | DOOR HINGED LEFT, 19" | - | - | X |
| 1G | RP DOR19R | DOOR HINGED RIGHT, 19" | - | - | X |
| 2C | IN GSK1083 | GASKET, 15.5" X 16.5" PUSH IN | - | - | X |
| 1H | RP DOR0006 | DOOR HINGED LEFT, 27" | - | - | X |
| 1I | RP DOR0007 | DOOR HINGED RIGHT, 27" | - | - | X |
| 2D | IN GSK1020 | GASKET, 15.5" X 24.25" PUSH IN | - | - | X |

* = NOT SHOWN

DRAWER ASSEMBLY NPR/WPR
CALL FACTORY FOR REPLACEMENT PARTS:
888-994-7636

Parts List

| ITEM | SERVICE PART | DESCRIPTION |
|------|--------------|-----------------------------------|
| | RP MOD1501A | 21" COMPLETE DRAWER ASSY W/FRONTS |
| | RP MOD1501A | 21" COMPLETE CARTRIGE (NO FRONTS) |
| A | RP DWR1901 | 21" DRAWER BOX W/FRONT |
| B | RP FRM121E | 21" DRAWER BOX |
| C | RP FRM1501A | 21" DRAWER SKELETON |
| D | RP FRT0507 | 21" DRAWER FRONT |
| * | IN GSK1036 | 21" DRAWER GASKET 10.2 X 18.3 |
| E | RP MUL021 | 21" DRAWER FRAME MULLION |
| F | RP MPT021 | 21" MOUNTING PLATE |
| | RP MOD1401 | 24" COMPLETE DRAWER ASSY W/FRONTS |
| | RP MOD1401A | 24" COMPLETE CARTRIGE (NO FRONTS) |
| A | RP DWR1401 | 24" DRAWER BOX W/FRONT |
| B | RP FRM324S | 24" DRAWER BOX |
| C | RP FRM1401A | 24" DRAWER SKELETON |
| D | RP FRT924 | 24" DRAWER FRONT |
| * | IN GSK1040 | 24" DRAWER GASKET 10.2 X 21.6 |
| E | RP MUL024 | 24" DRAWER FRAME MULLION |
| F | RP MPT024 | 24" MOUNTING PLATE |
| | RP MOD010 | 27" COMPLETE DRAWER ASSY W/FRONTS |
| | RP MOD010A1 | 27" COMPLETE DRAWER ASSY W/FRONTS |
| A | RP DRW927 | 27" DRAWER BOX W/FRONT |
| B | RP FRM127E | 27" DRAWER BOX |
| C | RP FRM1503 | 27" DRAWER SKELETON |
| D | RP FRT927 | 27" DRAWER FRONT |
| * | IN GSL1045 | 27" DRAWER GASKET 10.2 X 24.6 |
| E | RP MUL027 | 27" DRAWER FRAME MULLION |
| F | RP MPT027 | 27" MOUNTING PLATE |
| | RP MOD018 | 32" COMPLETE DRAWER ASSY W/FRONTS |
| | RP MOD018A | 32" COMPLETE DRAWER ASSY W/FRONTS |
| A | RP DRW132T | 32" DRAWER BOX W/FRONT |
| B | RP FRM132E | 32" DRAWER BOX |
| C | RP FRM018 | 32" DRAWER SKELETON |
| D | RP FRT932 | 32" DRAWER FRONT |
| * | IN GSK1050 | 32" DRAWER GASKET 10.2 X 29.7 |
| E | RP MUL0201 | 32" DRAWER FRAME MULLION |
| F | RP MPT032 | 32" MOUNTING PLATE |
| 1 | RP CTC0901 | FLIPPER ASSEMBLY (L & R) |
| | RP TRK05SM | DRAWER TRACK SET |
| 2A | RP TRK05SMR | DRAWER TRACK RIGHT |
| 2B | RP TRK05SML | DRAWER TRACK LEFT |
| 3 | HD HDL0130 | DRAWER HANDLE |
| 4 | HD BRG210 | DRAWER BEARING |
| 5* | FA SCW5002 | DRAWER BEARING BOLT |



* = NOT SHOWN

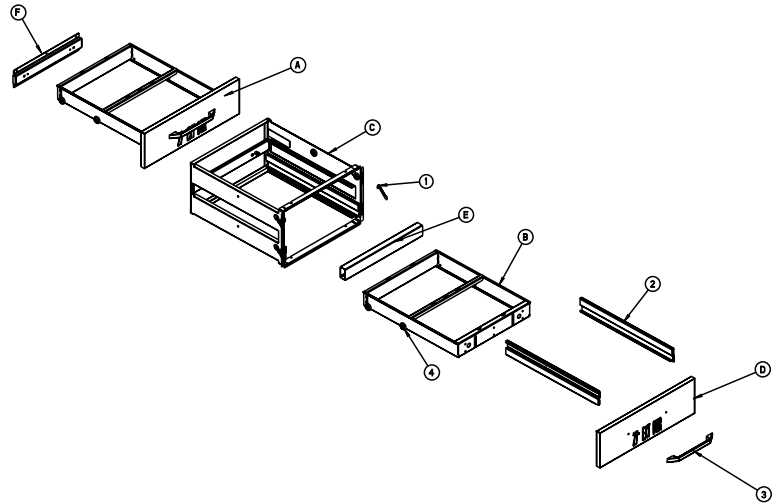
DRAWER ASSEMBLY LPNPO/LPWPO

CALL FACTORY FOR REPLACEMENT PARTS:
888-994-7636

Parts List

| ITEM | SERVICE PART | DESCRIPTION |
|------|--------------|-----------------------------------|
| | RP MOD0502 | 19" COMPLETE DRAWER ASSY W/FRONTS |
| | RP MOD0502A | 19" COMPLETE CARTRIGE (NO FRONTS) |
| A-T | RP DWR110 | 19" DRAWER BOX W/FRONT TOP |
| A-B | RP DRW110B | 19" DRAWER BOX W/FRONT BOTTOM |
| B | RP FRM019 | 19" DRAWER BOX |
| C | RP FRM0502A | 19" DRAWER SKELETON |
| D-T | RP FRT118 | 19" DRAWER FRONT TOP |
| D-B | RP FRT119 | 19" DRAWER FRONT BOTTOM |
| * | IN GSK1081 | 19" DRAWER GASKET 7.2 X 16.7 |
| E | RP MUL019 | 19" DRAWER FRAME MULLION |
| F | RP MPT019 | 19" MOUNTING PLATE |
| | RP MOD006 | 27" COMPLETE DRAWER ASSY W/FRONTS |
| | RP MOD006A | 27" COMPLETE DRAWER ASSY W/FRONTS |
| A | RP DRW130LP | 27" DRAWER BOX W/FRONT TOP |
| | RP DRW130LPB | 27" DRAWER BOX W/FRONT BOTTOM |
| B | RP FRM127E | 27" DRAWER BOX |
| C | RP FRM1402 | 27" DRAWER SKELETON |
| D | RP FRT05T | 27" DRAWER FRONT TOP |
| | RP FRT05B | 27" DRAWER FRONT BOTTOM |
| * | IN GSL1070 | 27" DRAWER GASKET 7.2 X 24.7 |
| E | RP MUL006 | 27" DRAWER FRAME MULLION |
| F | RP MPT027 | 27" MOUNTING PLATE |
| | RP MOD007 | 32" COMPLETE DRAWER ASSY W/FRONTS |
| | RP MOD007A | 32" COMPLETE DRAWER ASSY W/FRONTS |
| A-T | RP DRW132E | 32" DRAWER BOX W/FRONT TOP |
| A-B | PR DWR132B | 32" DRAWER BOX W/FRONT BOTTOM |
| B | RP FRM132E | 32" DRAWER BOX |
| C | RP FRM1504 | 32" DRAWER SKELETON |
| D-T | RP FRT032T | 32" DRAWER FRONT TOP |
| D-B | RP FRT032B | 32" DRAWER FRONT BOTTOM |
| * | IN GSK1075 | 32" DRAWER GASKET 7.2 X 29.7 |
| E | RP MUL007 | 32" DRAWER FRAME MULLION |
| F | RP MPT032 | 32" MOUNTING PLATE |
| 1 | RP CTC0901 | FLIPPER ASSEMBLY (L & R) |
| 2 | RP TRK05SM | DRAWER TRACK SET |
| 2A | RP TRK05SMR | DRAWER TRACK RIGHT |
| 2B | RP TRK05SML | DRAWER TRACK LEFT |
| 3 | HD HDL0130 | DRAWER HANDLE |
| 4 | HD BRG210 | DRAWER BEARING |
| 5* | FA SCW5002 | DRAWER BEARING BOLT |
| 3 | HD HDL0130 | DRAWER HANDLE |
| 4 | HD BRG210 | DRAWER BEARING |
| 5* | FA SCW5002 | DRAWER BEARING BOLT |

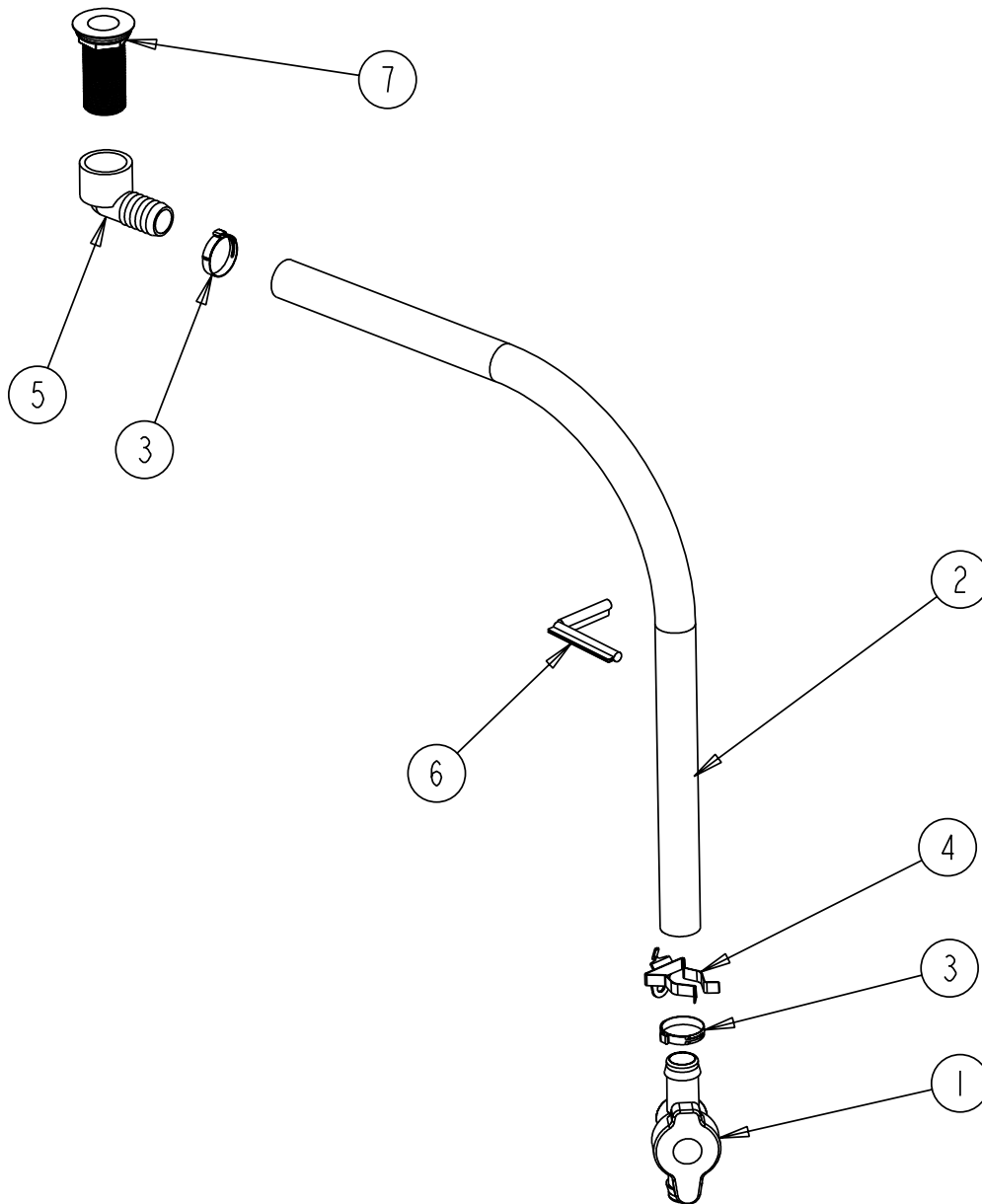
* = NOT SHOWN



DRAIN ASSEMBLY

CALL FACTORY FOR REPLACEMENT PARTS:
888-994-7636

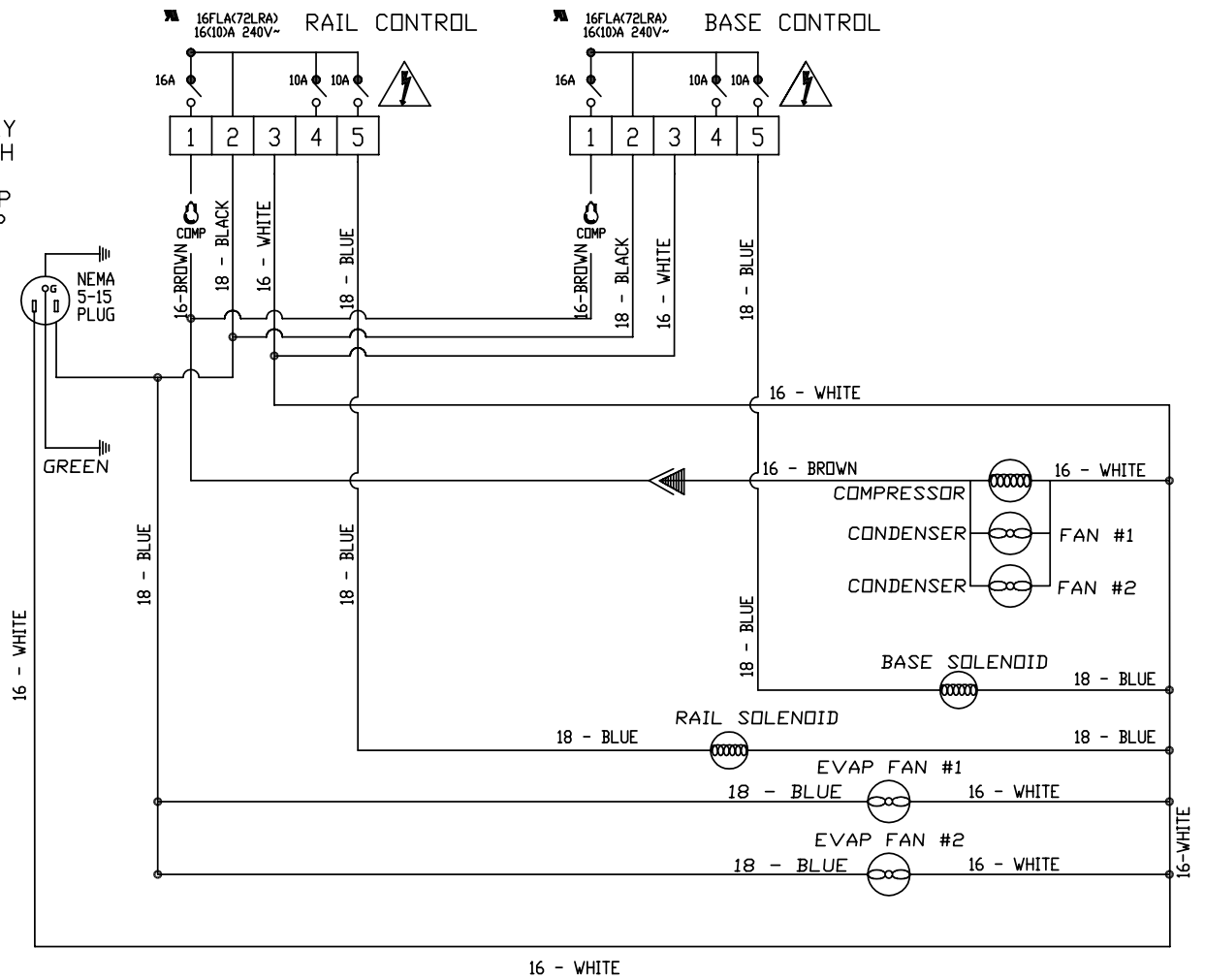
Parts List



| ITEM | SERVICE PART | DESCRIPTION |
|------|--------------|----------------------------------------------------------------|
| 1 | PB VLV1803 | BALL VALVE, 1-1/2 PVC FEMALE |
| 2 | PB TBG1801 | TUBING, 1" VINYL, BLACK |
| 3 | HD CLM1801 | CLAMP, 1" OETIKER |
| 4 | HD CLP1902 | CLIP, SPRING, 1-1 7/8" |
| 5 | PB ELB1801 | ELBOW, 90 DEG |
| 6 | EL GRM1801 | GROMMET, PUSHON, DRAIN ASSY |
| 7 | HD DRN1702 | DRAIN, ABS, GRAY, 1.375", 1.00" NPS X 2.875" LG W/NUT & WASHER |

* = NOT SHOWN

POWER SUPPLY
115V-60HZ-1PH
CORD WITH
GROUNDED CAP
NEMA # 5-15P



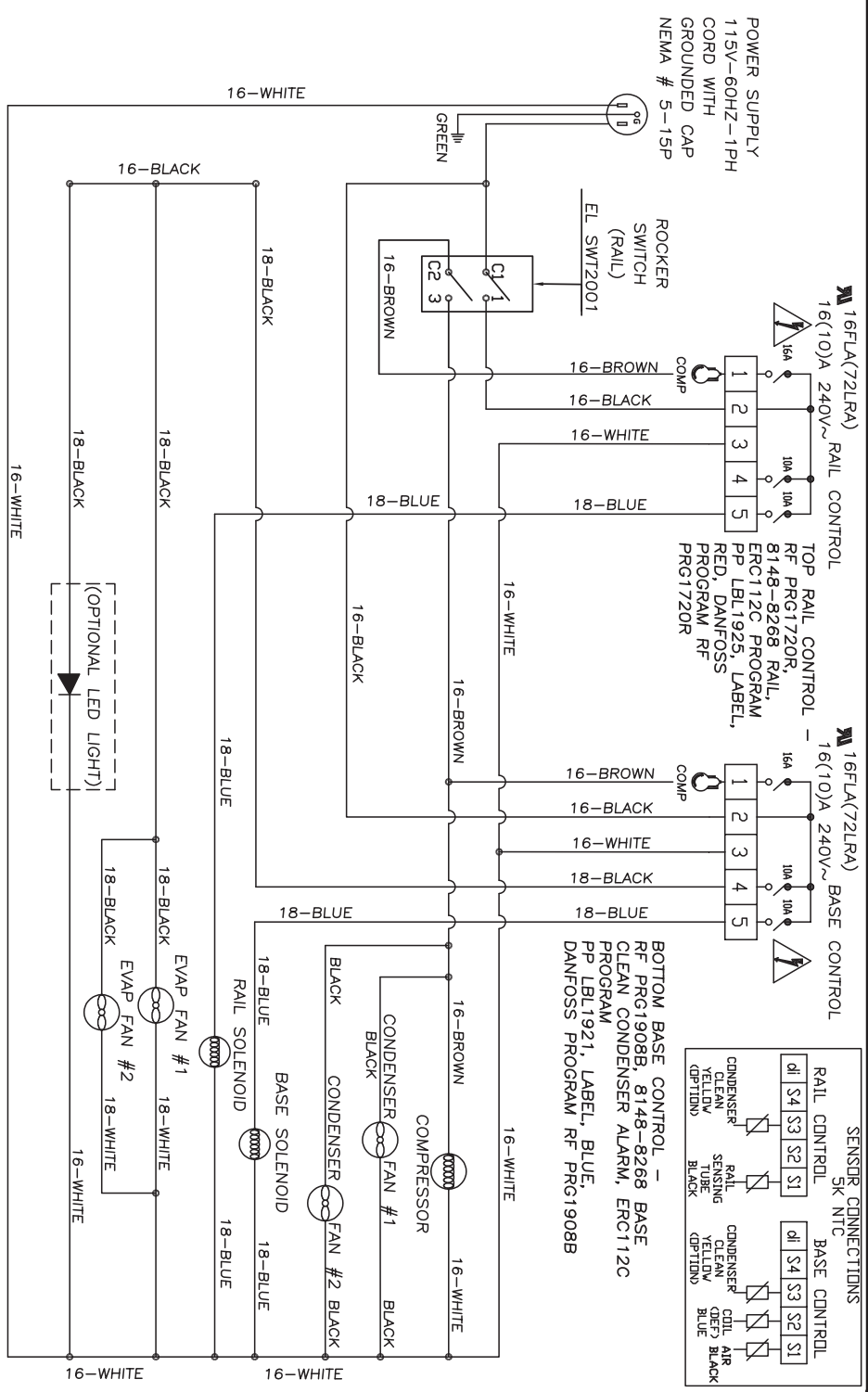
NOTE:
BLUE (EVAP COIL) = S2
BLACK (AIR) = S1

ELECTRICAL DIAGRAM
8000-290 SERIES - SINGLE CMPR
DANFOSS ERC112C CONTROL

Wiring Diagram

ELECTRICAL DIAGRAM CUSTOM PREP TABLE-290 SERIES SINGLE COMPRESSOR WITH CLEAN CONDENSER PROGRAM DANFOSS ERC112C CONTROL

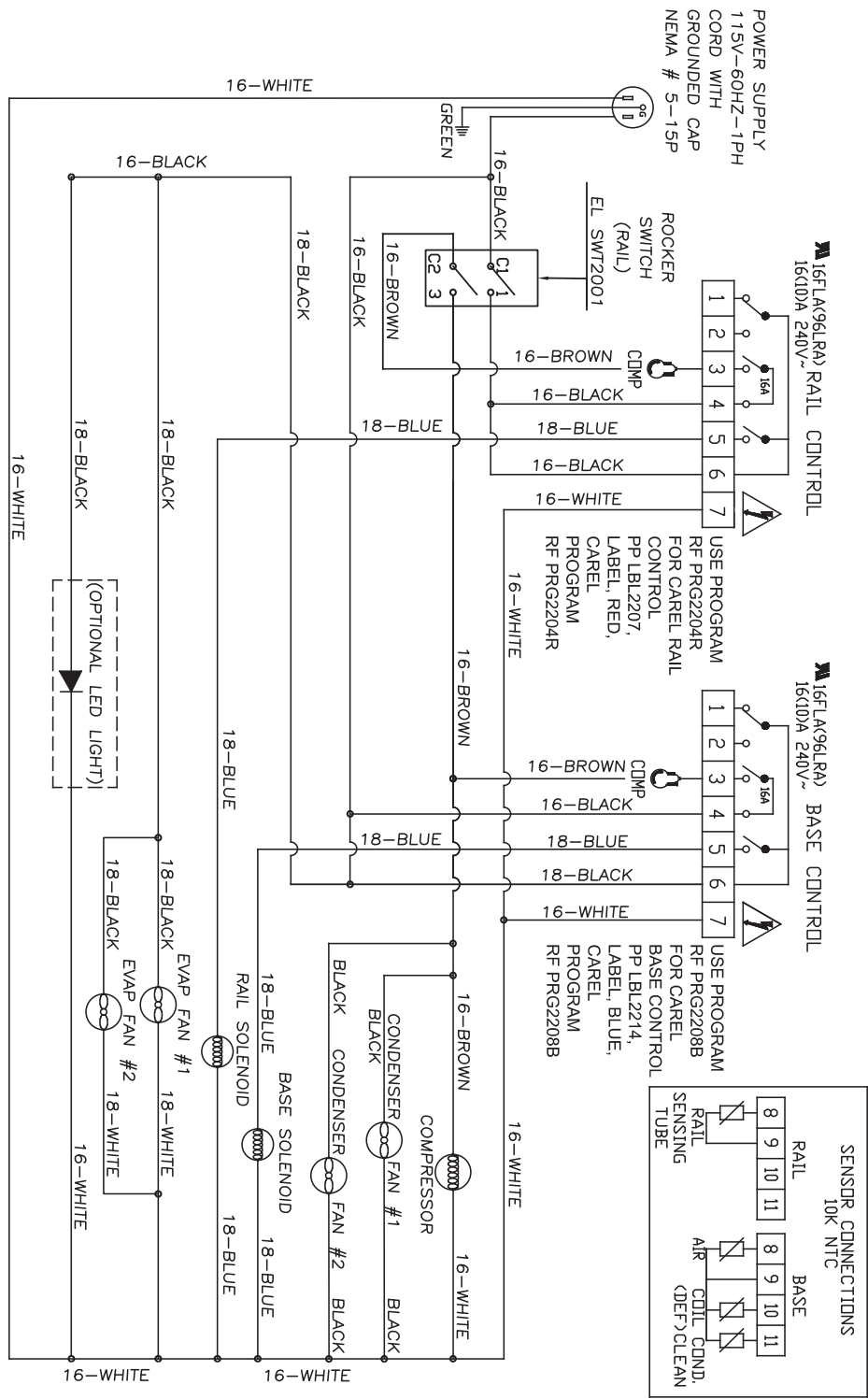
M:\ENGINEERING\ELECTRICAL MASTER\RADELL\PIZZA TABLES\8000-SGL CMPR\112-2102



REVISIONS

| REV | ENR | DESCRIPTION | DRAWN | DATE |
|-----|-------|-----------------------------------------------------|-------|----------|
| A | 65719 | NEW ELEC DIAGRAM SGL COMP-COUD 290 DANFOSS CONTROLS | DDL | 04/06/22 |
| * | * | * | * | * |
| * | * | * | * | * |
| | | | | |
| | | | | |

Wiring Diagram

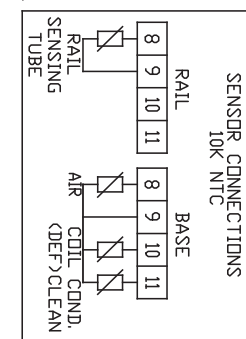


ELECTRICAL DIAGRAM
 CUSTOM PREP TABLE-290 SERIES
 SINGLE COMPRESSOR WITH CLEAN
 CONDENSER PROGRAM
 CAREL PZUAC0E520

REVISIONS

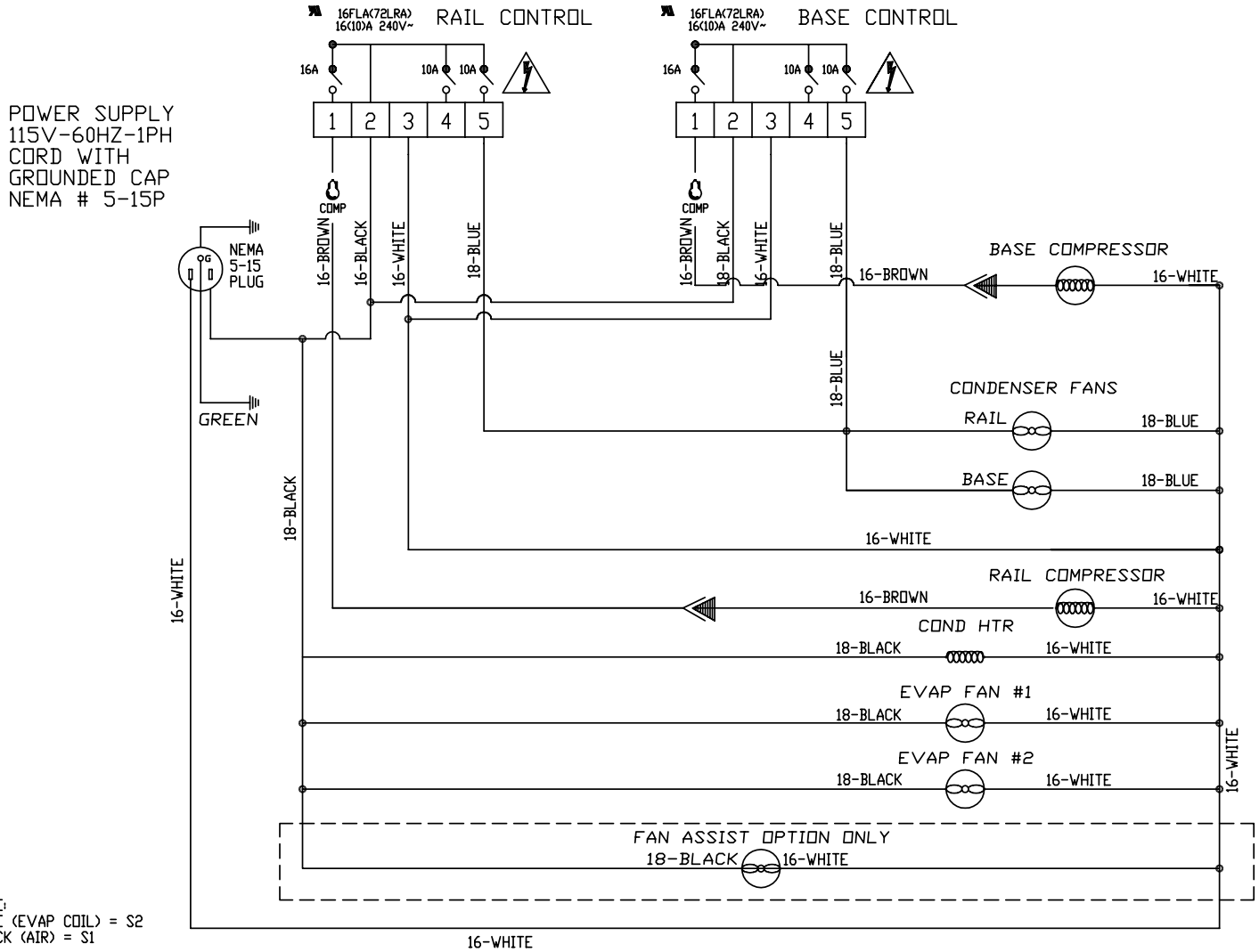
| REV | ENR | DESCRIPTION | BY/IN | DATE | APPRO |
|-----|-------|---------------------------------------------------|-------|----------|-------|
| A | 65719 | NEW ELEC DIAGRAM SGL COMP-COND 290 CAREL CONTROLS | DDL | 04/06/22 | * |
| * | * | * | * | * | * |
| * | * | * | * | * | * |
| * | * | * | * | * | * |

M:\ENGINEERING\ELECTRICAL MASTER\RADEL\PIZZA TABLES\8000-SGL_CMPR\T12-2102C



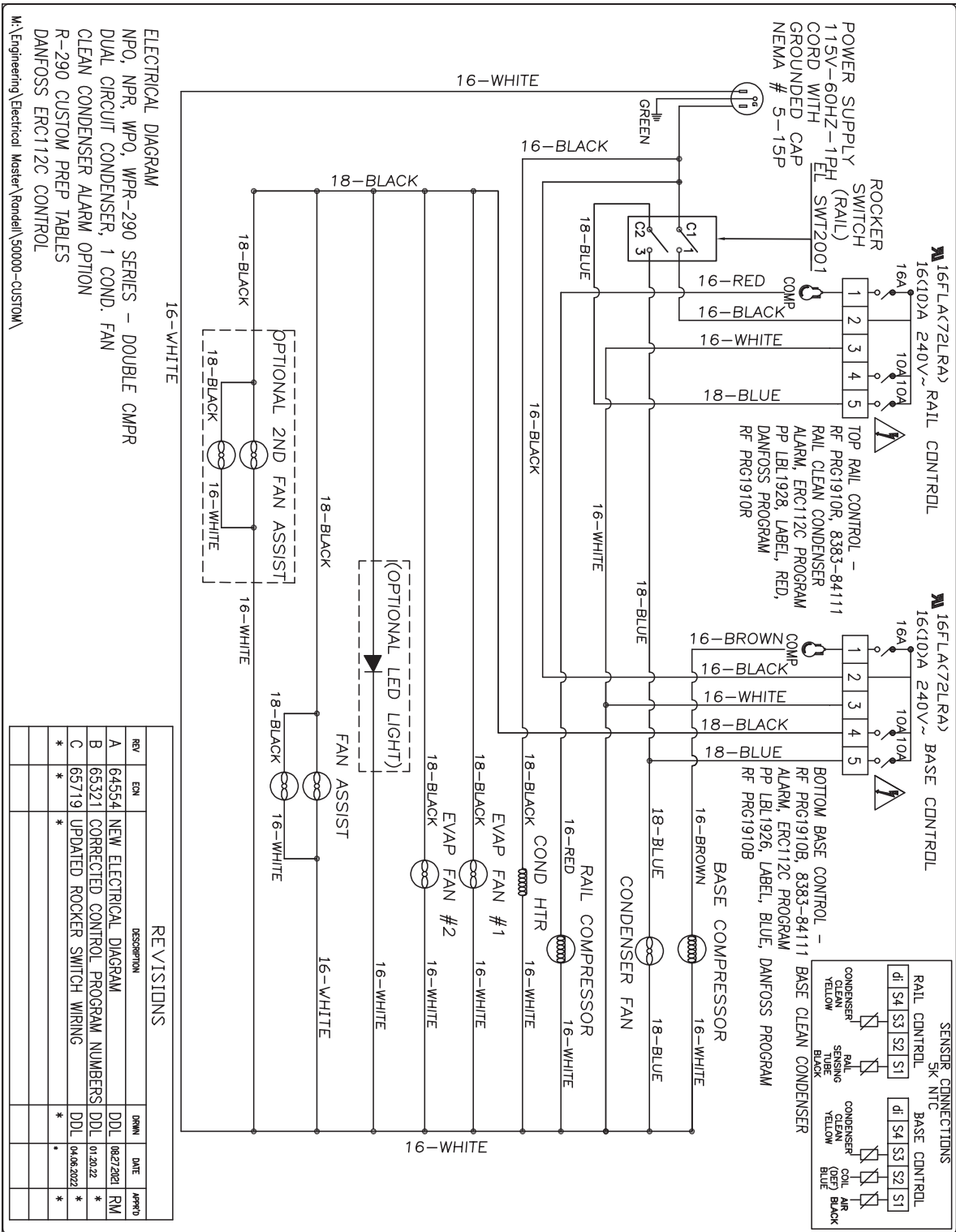
DOUBLE COMPRESSOR

Wiring Diagram

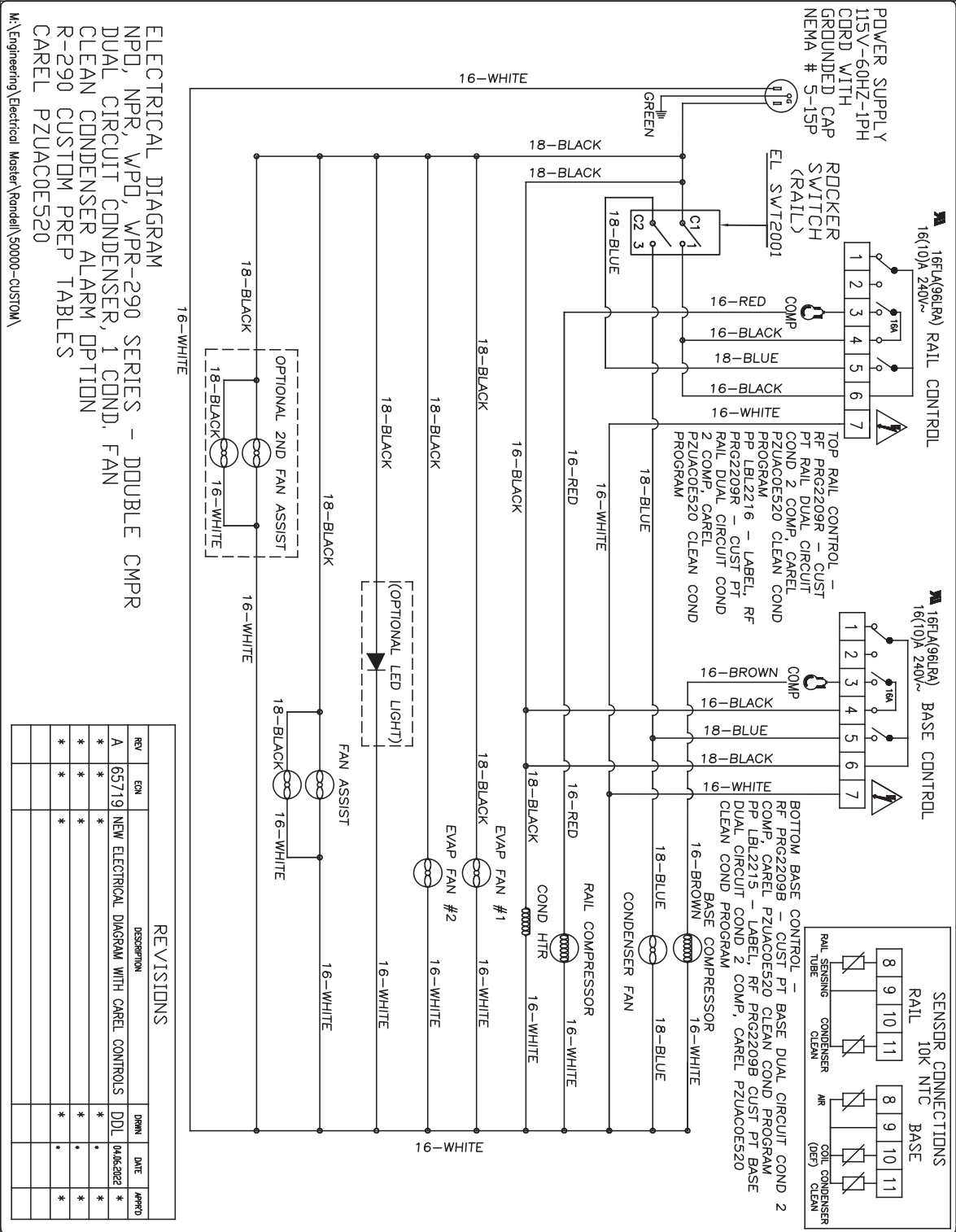


ELECTRICAL DIAGRAM
8000-290 SERIES - DOUBLE CMPR
DANFOSS ERC112C CONTROL

Wiring Diagram



Wiring Diagram



ELECTRICAL DIAGRAM
 NPD, NPR, WPD, WPR-290 SERIES - DOUBLE CMPR
 DUAL CIRCUIT CONDENSER, 1 COND, FAN
 CLEAN CONDENSER ALARM OPTION
 R-290 CUSTOM PREP TABLES
 CAREL PZUAC0E520

REVISIONS

| REV | CDN | DESCRIPTION | DRWN | DATE | APPRD |
|-----|-------|--------------------------------------------|------|------------|-------|
| A | 65719 | NEW ELECTRICAL DIAGRAM WITH CAREL CONTROLS | DDL | 04/06/2022 | * |
| * | * | * | * | * | * |
| * | * | * | * | * | * |
| * | * | * | * | * | * |
| * | * | * | * | * | * |

M:\Engineering\Electrical Master\Randell\50000-CUSTOM\

Service Log

| | |
|--------------------|-------------------|
| Model No: | Purchased From: |
| Serial No: | Location: |
| Date Purchased: | Date Installed: |
| Purchase Order No: | For Service Call: |

| Date | Maintenance Performed | Performed By |
|------|-----------------------|--------------|
| | | |
| | | |
| | | |
| | | |
| | | |
| | | |
| | | |
| | | |
| | | |
| | | |
| | | |
| | | |
| | | |
| | | |
| | | |
| | | |
| | | |
| | | |