



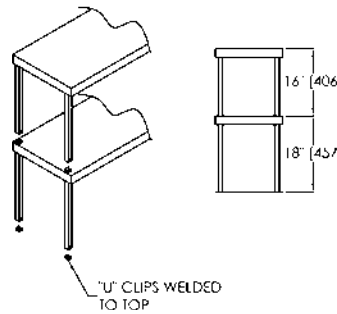
CHEF SERVICE COUNTER

CUSTOM DESIGN OVERSHELVING

PROJECT NAME:	
LOCATION:	
ITEM NO:	
QTY:	
MODEL NO:	
AIA NO:	
SIS NO:	
CSI SECTION:	11400

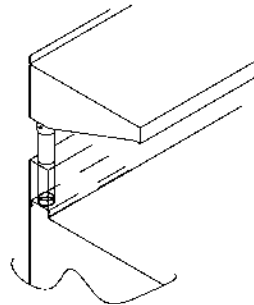
STANDARD DECK-MOUNTED OVERSHELF:

Constructed of die-formed 16 gauge stainless steel (14 gauge is optional). Supported with stainless tubular uprights.



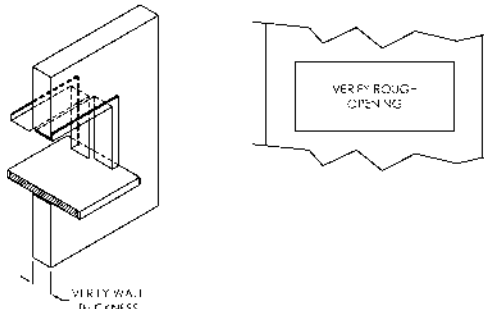
CANTILEVERED MOUNTED OVERSHELF:

Constructed of die-formed 16 gauge stainless steel (14 gauge is optional). Supported with 1 5/8" stainless tubular uprights.



PASS-THRU OVERSHELF:

Model # 11069 - Constructed of 16 gauge stainless steel with solid core shelf. Provided with two piece telescoping frame. 18" to 24" widths available on shelf. Frame adjusts for 4 1/2" to 10" wall thickness.



ADDITIONAL RESOURCES:

[Request A Quote](#)[Sales Tools](#)[Find A Rep](#)