



# KETTLES

## TILTING KETTLE GAS MODELS DH

Cook-Chill kettle, self-contained, high efficiency 360,000 BTU/hr gas fired, hemispheric bottom steam jacketed kettle. Electrically driven worm gear tilts kettle body to simplify product loading, kettle cleaning and transfer of non-pumpable products. 50 PSI maximum jacket operating pressure, 3" air operated drop down outlet valve.

### AVAILABLE MODELS:

DH-100 (100 GALLON)  
DH-125 (125 GALLON)

### CONSTRUCTION:

- 50 PSI, ASME Code hemispheric bottom kettle jacket construction and National Board registered
- C.S.A. Design Certified and NSF listed
- High efficiency fin tube gas heat exchanger with 360,000 BTU/hr maximum power input
- Reinforced bar rim and flow control pouring lip
- Electrically driven worm gear tilt of kettle body for pouring and cleaning
- Electronic ignition
- 3" air operated drop down stainless steel outlet valve mounted flush to kettle bottom
- Type 316 stainless steel kettle interior and all wetted parts, type 304 elsewhere
- 3/4" rim mounted water fill faucet
- Compressed air connection for CapKold® Pump/Fill Station (see CKPF/3)
- NSF listed

### INTEGRAL CONTROL PACKAGE:

- Android touch screen comes with English or Spanish, Gallons or Liters, and Fahrenheit or Celsius at a touch
- Digital product temperature indicator/controller
- Pilot light indicator
- Power ON indicator light
- Kettle body tilt switch and indicator
- Low water (kettle jacket) indicator light
- Pre-set automatic water metering with real time display

Certifications:  

PROJECT NAME:	
LOCATION:	
ITEM NO:	
QTY:	
MODEL NO:	
AIA NO:	
SIS NO:	
CSI SECTION:	11400



DH-100 model shown

### OPTIONS/ACCESSORIES:

Product Temperature Paperless Chart Recorder (saves data as a PDF) (not NSF Listed)

Removable Pouring Cover Strainer  
Prison Package

### ADDITIONAL RESOURCES:

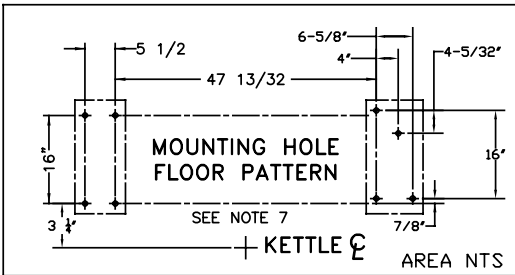
[Request A Quote](#)

[Sales Tools](#)

[Find A Rep](#)

**SERVICE CONNECTIONS & NOTES:**

- ① ELECTRICAL SUPPLY: 1/2" CONDUIT (2) REQUIRED
- ② AIR SUPPLY: 3/8" NPT (100 PSI MAX)
- ③ GAS SUPPLY: 1" NPT
- ④ POTABLE COLD WATER SUPPLY: 3/4" HOSE CONNECTION  
0.34 GPM @ 30 PSI (30 PSI MIN. & 60 PSI MAX)
- ⑤ RECOMMENDED LOCATION FOR ACCESS TO 4-20 MA  
FOOD PROBE OUTPUT ON CONTROL
- ⑥ 24" SERVICE CLEARANCE REQUIRED
- ⑦ UNIT MUST BE MOUNTED ON NON-COMBUSTIBLE  
FLOORING & SEALED AT BASE WITH CAULKING
- ⑧ 42" DRAIN RECOMMENDED

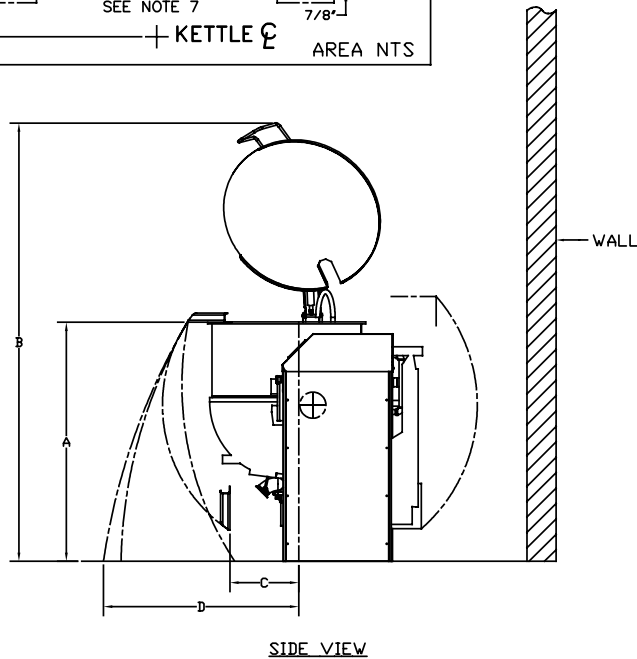


ELECTRICAL REQUIREMENTS		
VOLTAGE	PHASE	AMPS
208	3	7
240	3	7
480	3	3.5
ALL UNITS 60Hz		

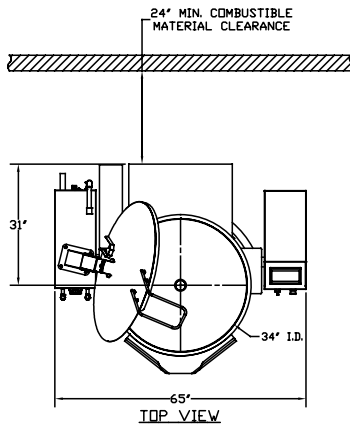
	NATURAL GAS	PROPANE GAS
GAS MANIFOLD PRESSURE	3.5" W.C.	10" W.C.
MAX. INPUT-BTU/HR	360,000	360,000
RECOMMENDED INCOMING GAS FEED RATE	7" W.C. MIN 14" W.C. MAX	11" W.C. MIN 14" W.C. MAX

PHYSICAL DIMENSIONS				
MODEL	DIM "A"	DIM "B"	DIM "C"	DIM "D"
DH/INA/2-100	55"	100"	17"	47"
DH/INA/2-125	59"	104"	21"	51"

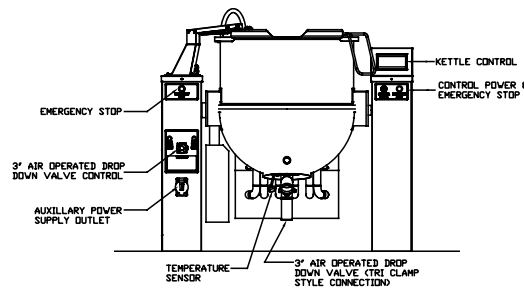
RECOMMENDED CLEARANCES		
RIGHT	LEFT	REAR
12"	12"	24"



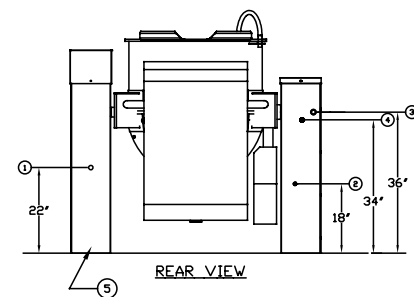
SIDE VIEW



TOP VIEW



FRONT VIEW



REAR VIEW

179475 RevA