



# STEAM SOUS VIDE

## BASKETS & HANDLING ACCESSORIES FOR MODELS CKCT

CapKold automatic cook-chill tank. Cook Tank to have nominal capacity of 600, 1000 or 2200 pounds, a high performance water circulating pump and rear mounted heating and chilled water cooling exchangers. Convenient front facing control panel to allow unattended operation and complete cook-chill cycle documentation of product temperature.

PROJECT NAME:	
LOCATION:	
ITEM NO:	
QTY:	
MODEL NO:	
AIA NO:	
SIS NO:	
CSI SECTION:	11400



### AVAILABLE MODELS:

#### BASKET SET:

	CKCT-5	CKCT-10	CKCT-20
# BASKETS	5	5	8
SECTIONS/BASKET	4	5	5
LIFTING RACK	1	1	2
DOLLY	1	1	1

#### LIFTING FRAME:

Lifting frame for \_\_\_\_\_ (specify CKCT-5,10 or 20) Cook Tank consists of stainless steel all welded construction. Lifting frame attaches to lifting racks and hoist to enable lifting and lowering of Cook Tank baskets.

- Lifting Frame provided with two 3" swivel hooks with spring loaded locking tab for easy connection to Lifting Rack, and two "J" hooks

#### LIFTING RACK:

(Designed to hold a full set of Cook Tank baskets. One (1) lifting rack recommended for each complete set of Cook Tank baskets.)

Lifting Rack for \_\_\_\_\_ (Specify CKCT-5,10 or 20) consists of stainless steel all welded construction, designed to hold full set of product loading baskets and provide four point load balanced attachment of hoist using lifting frame device for rapid loading and unloading of Cook Tank. Lifting Rack includes the following standard features:

- Heavy Type 304 stainless steel welded construction
- Heavy 'U' bolt lift points at four corners of Lifting Rack

#### LIFTING RACK/BASKET DOLLY:

(For the transport of lifting rack and Cook Tank basket set. One (1) transport dolly recommended for each complete set of Cook Tank baskets.)

Lifting Rack/Basket Dolly for \_\_\_\_\_ (Specify CKCT-5, 10 or 20) Cook Tank consist of stainless steel frame with four casters, designed to hold corresponding size Basket Lifting Rack, provide a safe and sanitary place for loading cooking baskets and for easier movement of full or empty cooking

basket sets. Dolly to include the following standard features: Lifting Rack/Basket Dolly Construction

- Heavy Type 304 stainless steel welded frame
- Heavy duty 5" casters, two fixed and two swivel type, with locking brakes

### STANDARD FEATURES:

- One set of stacking Cook Tank Baskets already comes with each CapKold® Model CKCT Cook Tank. Baskets are designed to maximize the effective product load cooking/cooling capacity, while ensuring efficient water circulation around and between individual packaged product. The basket set consists of:

	CKCT-5	CKCT-10	CKCT-20
# BASKETS	5	5	8
SECTIONS/BASKET	4	5	5
LIFTING RACK	1	1	2
DOLLY	1	1	1

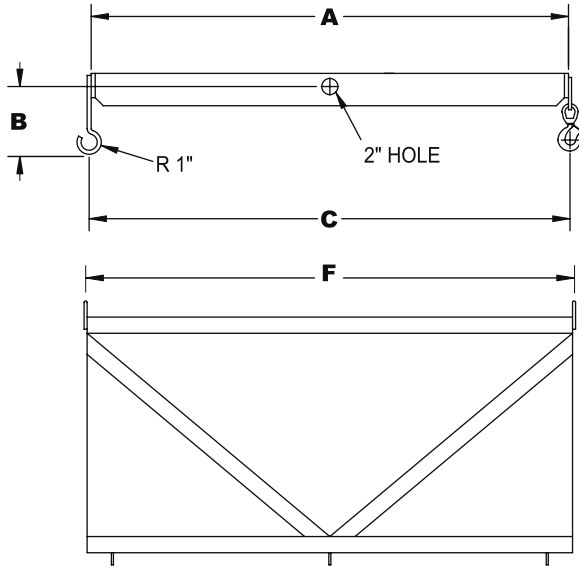
- 3/16" diameter Type 304 electro-polished stainless steel wire form construction on basket
- Each basket nests in lower basket

### ADDITIONAL RESOURCES:

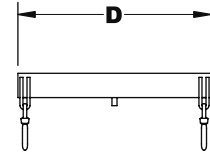
[Request A Quote](#)

[Sales Tools](#)

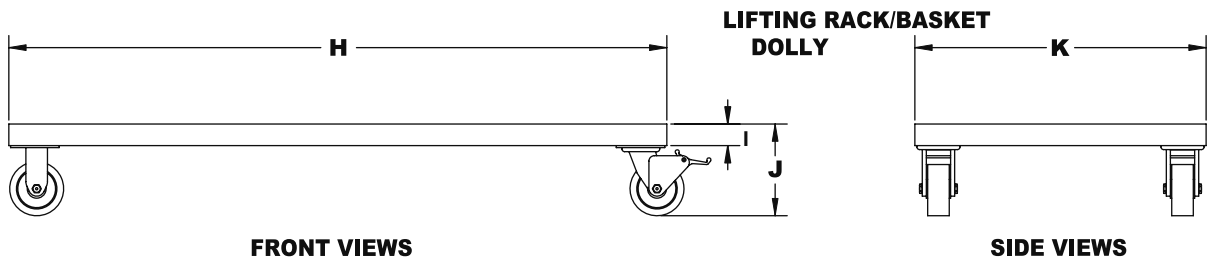
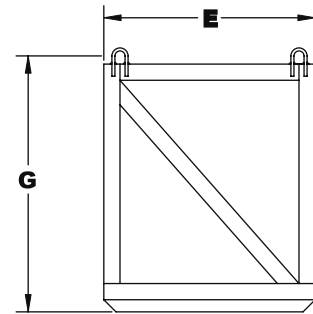
[Find A Rep](#)



LIFTING FRAME



LIFTING RACK



LIFTING RACK/BASKET DOLLY

FRONT VIEWS

SIDE VIEWS

**PHYSICAL DIMENSIONS**

MODEL	A	B	C	D	E	F	G	H	I	J	K
CKCT-5 FRAME	49-3/4"	6-5/8"	49-3/8"	23-3/4"	-	-	-	-	-	-	-
CKCT-10 FRAME	62-1/2"	10"	62-1/2"	23-7/8"	-	-	-	-	-	-	-
CKCT-20FRAME	90-3/8"	9"	90-3/8"	32-3/8"	-	-	-	-	-	-	-
CKCT-5 RACK	-	-	-	-	26-1/8"	49-3/4"	26-5/8"	-	-	-	-
CKCT-10 RACK	-	-	-	-	26-1/8"	60-3/4"	32 -5/8"	-	-	-	-
CKCT-20 RACK	-	-	-	-	31"	92-1/8"	47-1/2"	-	-	-	-
CKCT-5 DOLLY	-	-	-	-	-	-	-	50-1/2"	3"	9-1/2"	27-1/2"
CKCT-10 DOLLY	-	-	-	-	-	-	-	61"	3"	9-1/2"	27"
CKCT-20 DOLLY	-	-	-	-	-	-	-	93-1/4"	4"	13-1/2"	31-7/8"