



PUMP/FILL STATIONS

LOW-MID VOLUME PUMP STATION MODELS CKPP

CapKold model CKPP 16-160 oz portioning pump, single piston, and is air operated to facilitate transfer of product from kettle to food container. Unit has easily adjustable volume control by use of hand wheel with reference counter. Optional smaller cylinder sets are available. Unit provided with casters to accommodate movement and storage. 6' of intake hose with tri-clover connection to kettle and vertical stainless steel discharge standard.

AVAILABLE MODELS:

CKPP-64
CKPP-160

STANDARD FEATURES:

- All Stainless steel piston pump
- Caster mounted
- All air actuated – no power required
- Manufactured to the latest sanitary standards and HACCP compliant
- Foot pedal operation for depositing
- Speed control variable with pressure regulator
- High temperature 6' long, 2" diameter suction hose
- 16 oz – 64 oz piston and cylinder set adjustable via a stroke adjust hand wheel with reference counter for easy set up
- 1.25" vertical stainless steel positive cut-off spout assembly with rigid 1.25" discharge line

CONTROL PACKAGE:

- Air operated foot switch operates metered product delivery

PROJECT NAME:	
LOCATION:	
ITEM NO:	
QTY:	
MODEL NO:	
AIA NO:	
SIS NO:	
CSI SECTION:	11400



CKPP-64 Shown

OPTIONS/ACCESSORIES:

Spare Parts Kit

4-16 oz Piston Set

8-32 oz Piston Set

16-64 oz Piston Set

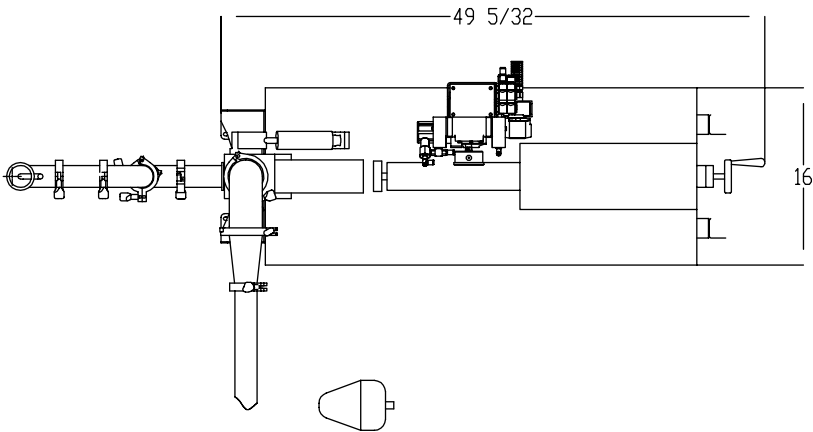
40-160 oz Piston Set

ADDITIONAL RESOURCES:

[Request A Quote](#)

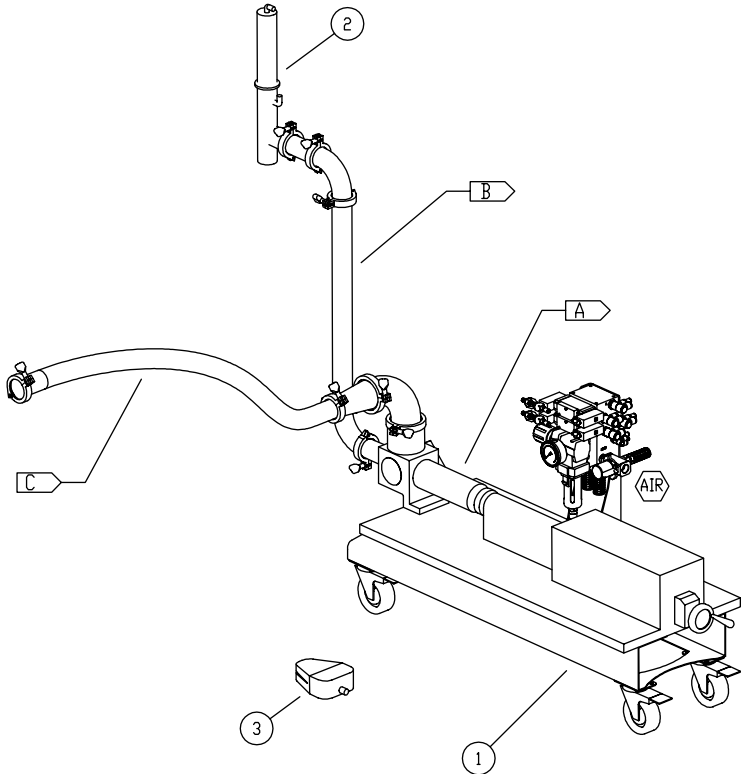
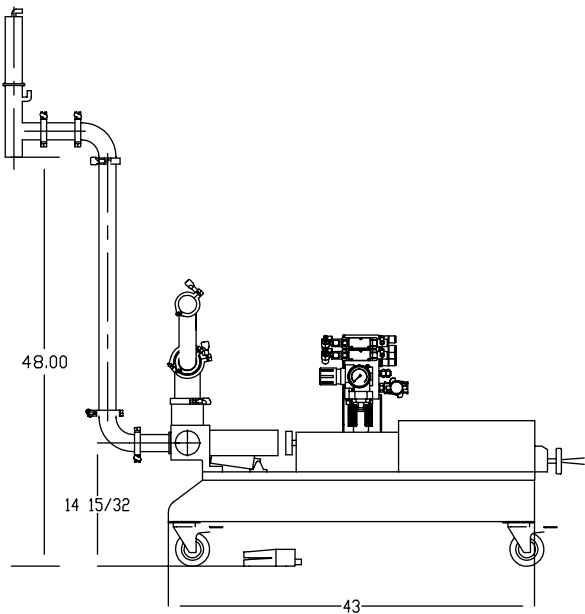
[Sales Tools](#)

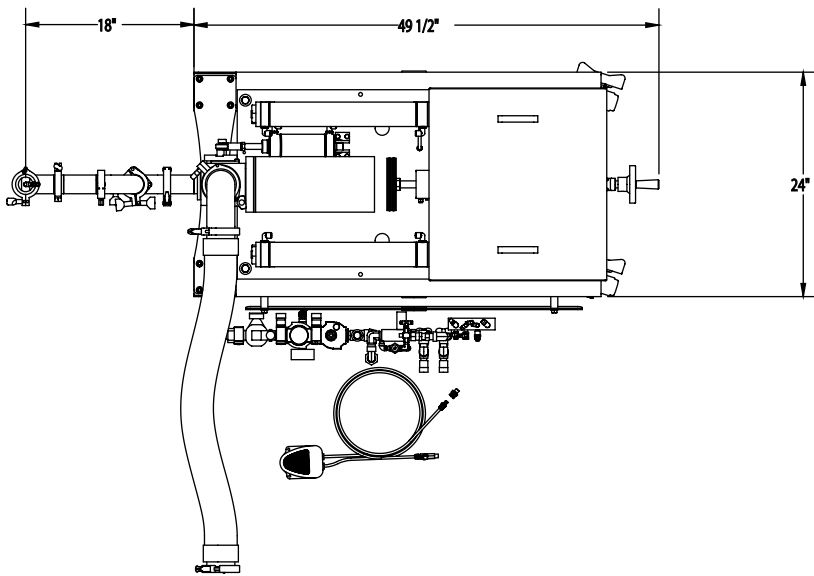
[Find A Rep](#)



NOTES	
ALL DIMENSIONS FOR REFERENCE ONLY	
MAXIMUM PRODUCT TEMP 208 DEG F.	
PRODUCT DOES NOT CONTAIN PARTICULATES	
AIR REQUIRED: 16 SCFM @ 90 PSI MAXIMUM ALLOWABLE PRESSURE DROP: 10 PSI FOR A RATE OF 30 CYCLES/MINUTE	
A	DEPOSITOR INCLUDES 8-32 OZ. PISTON & CYLINDER SET
B	SPOUT INCLUDES 1" RIGID DISCHARGE LINE
C	2" DIA HOT HOSE X 6 FT. LONG TO CONNECT TO CUSTOMER'S BRAISING PAN, INCLUDES TRI CLAMPS AND GASKETS.

LEGEND	
CUSTOMER TO PROVIDE:	
AIR	AIR DPOP: 1/2" MNPT





NOTES:

ALL DIMENSIONS ARE FOR REFERENCE ONLY.

LIQUID DEPOSITOR ACCURACY: ESTIMATED $\pm 1\%$ OR BETTER (STD DEVIATION @ 1 SIGMA)

PRODUCT PARTICULATE SIZE NOT TO EXCEED 1" CUBES.

MAXIMUM PRODUCT TEMPERATURE 40 - 200 deg F.

RATE: BEST EFFORT

AIR REQUIRED: 40 SCFM @ 90 PSI

MAXIMUM ALLOWABLE PRESSURE DROP: 10 PSI

DEPOSITOR INCLUDES:

(1x) 160 oz. PISTON/CYLINDER SET

RIGID 2" DIA STAINLESS STEEL SUPPLY LINE TO SPOUT

(2X) 3" DIA FLEX HOSE x 3 FT LONG, TO CONNECT TO CUSTOMER'S COOKING KETTLE, INCLUDES TRI-CLAMPS AND GASKETS

FOOT SWITCH, AIR

