



OPERATOR MANUAL

IMPORTANT INFORMATION, KEEP FOR OPERATOR

888-994-7636, fax 888-864-7636
unifiedbrands.net

THIS MANUAL MUST BE RETAINED FOR FUTURE REFERENCE. READ, UNDERSTAND AND FOLLOW THE INSTRUCTIONS AND WARNINGS CONTAINED IN THIS MANUAL.

NOTIFY CARRIER OF DAMAGE AT ONCE It is the responsibility of the consignee to inspect the container upon receipt of same and to determine the possibility of any damage, including concealed damage. Power Soak suggests that if you are suspicious of damage to make a notation on the delivery receipt. It will be the responsibility of the consignee to file a claim with the carrier. We recommend that you do so at once.

Manufacture Service/Questions 888-994-7636.

This manual provides information for:

POWER PREP PS-300



PRE-UNCRATING CHECKLIST

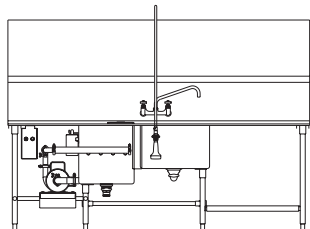
Verifying System Requirements

Prior to completely removing the Power Prep unit from the crate, it is necessary to verify certain requirements. **Remove only the lid** of the crate at this time.

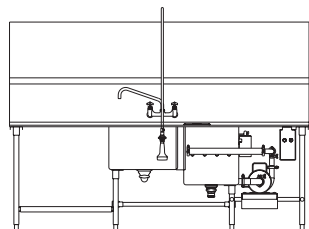
Verifying System Direction

The Power Prep can be built as a "Left to Right" or as a "Right to Left" configuration with a variety of options.

Left-to-Right Unit



Right-to-Left Unit



Look inside the crate and verify that the configuration of the machine matches the specifications of the order description.

Verifying the Electrical Requirements

The electrical requirements for the machine are on the machine identification tag located on the side of the wash tank, next to the motor. The electrical service in the facility where the machine is to be installed must be rated for the capacity shown on the identification tag. This machine will require a permanently mounted disconnect that is in a "liquid tight" enclosure. Do not use an in-line plug for disconnecting the machine from the electrical source.



Contact a licensed and certified electrician to make the enclosure installation if one determine the appropriate breaker (overcurrent protection) and wire size for the

machine's electrical service. See Page 25 for electrical current and voltage. The electrical requirements of your new system are on the serial number plate located on the end of the wash sink near the front, adjacent to the control panel enclosure. They are also shown inside the control panel enclosure itself.

All Power prep systems have a single point electrical connection, and a dedicated circuit is required.

The system is completely pre-wired and tested at the factory, and a hard-wired connection from an appropriate power source is all that is required.

The installer is to provide a NEMA 3X disconnect that should be incorporated in the fixed wiring.

Properly sized watertight conduit, fittings and parts are required, as well as the appropriate gauge wire.

For PS-300, Installation of Water-Tight Disconnect Box with Switch, refer to instructions supplied with the disconnect box to complete wiring for this device. If instructions are not followed the warranty will be voided.

If your system is a "left-to-right" unit, you should locate the disconnect at the left end of the system. (The opposite would be true for a "right-to-left" system.)

Ideally, the disconnect should be located on the wall directly behind the pump motor and control panel provided this location is easily accessible by the operator and does not interfere with the faucet.

A wiring diagram is located in the system's control panel enclosure.

WARNING: DO NOT CONNECT THE MACHINE USING A POWER CORD AND PLUG OR AN EXTENSION CORD OF ANY KIND.

WARNING: KITCHENS ARE A WET ENVIRONMENT WHICH REQUIRE ALL ELECTRICAL CONNECTIONS TO BE "LIQUID TIGHT".

ELECTRICAL INSTALLATION MUST CONFORM TO ALL APPLICABLE LOCAL WIRING CODES. ALL ELECTRICAL CONNECTIONS MUST BE "LIQUID TIGHT" AND READILY ACCESSIBLE FOR INSPECTION AFTER INSTALLATION WITHOUT MOVING THE PRODUCE SOAK MACHINE.

Removal of Existing Unit

If the new Power Prep is not replacing an existing sink, skip this section. If the removal of an existing sink is necessary, continue with this section.

Existing Supply Lines

The water and electrical source must be shut off before disconnecting or cutting the water or electric lines.

WARNING: FAILURE TO SHUT OFF THE ELECTRICAL AND WATER SUPPLY WILL RESULT IN PERSONAL INJURY, INCLUDING SERIOUS INJURY OR DEATH, AND EXTENSIVE EQUIPMENT DAMAGE.

Disconnect any electrical cord that is connected to the existing sink. Cut the cold and hot water lines as closely as possible to the fittings on the existing sink.

IMPORTANT: BE SURE TO LEAVE ENOUGH OF THE EXISTING PIPING FOR THE INSTALLATION OF NEW SHUTOFF VALVES. SEE "PRE-PLUMBING" SECTION FOR REFERENCE.

Existing Sink Removal

Detach any fasteners holding the existing sink in place and remove the existing sink along with any shelves that may interfere with the installation of the Power Prep. Discard all unwanted materials in an appropriate container or disposal area.

Wall Preparation

Clean the wall(s) where the new Power Prep will be installed. Fill all existing holes with an appropriate filler material. Be sure that any outlet that will be covered by the sink has been disconnected and a water tight cover has been installed over the opening.

PRE-PLUMBING

Supply and Waste Lines

The supply and waste lines must meet the following requirements:

- Hot and cold water supply must be ½" diameter or larger.
- Center lines of the hot and cold water supply must be 10" or less above the floor to access the shutoff valves when the machine is installed.
- Waist drain must be 1-1/2" minimum diameter.
- Center line of the waste drain must be 11" or less above the floor to allow the sink to drain properly.

Install new shutoff valves on the hot and cold water supply lines.

IMPORTANT: IT IS RECOMMENDED THAT ALL MACHINES BE INSTALLED USING NEW ½" OR LARGER BALL-VALVE SHUT OFF VALVES.

Grease Trap

It may be necessary to relocate and/or replace the existing grease trap. Be sure that the grease trap meets or exceeds the local plumbing codes.

IMPORTANT: WASTE PLUMBING MUST CONFORM TO LOCAL BUILDING CODES.

POST-UNCRATING INSTRUCTIONS

UNCRATING

Remove From Crate

Remove the Power Prep from the shipping crate. Sharp staples and nails are used to crate the machine and care must be taken in handling boards and cardboard to keep from creating a puncture or injury to people or the equipment. Discard the crating materials in an appropriate disposal area or container.

Inspect the sink and packages to be certain that there was no damage created by the shipping company. If there are signs of shipping damage, contact the shipping company before proceeding.

Remove the packages from the Power Prep tank and locate the box labeled "OPEN FIRST". This box will contain the fasteners and sealant that will be required for assembly of the Power Prep.

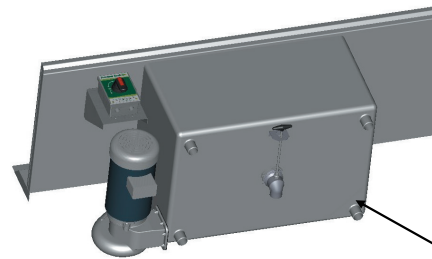


Locate the box labeled "OPEN FIRST" to find fasteners and sealant used for the installation.

Component Installation

If unit does not come assembled due to size/type lay the sink on its back to allow access to the bottom of the tanks. Be careful to not let the sink assembly drop on the floor with an impact that would damage the sink assembly or the floor. It may be necessary to place some cardboard or tarp on the floor to protect the finish.

IMPORTANT: DO NOT BEND THE EDGE OF THE BACKSPASH WHEN LAYING THE SINK ON ITS BACK SIDE.



DRAIN IS INSTALLED IN THE BOTTOM OF THE TANK. DRAIN WITH SCREEN TO BE INSTALLED UNDER THE WASH SINK.

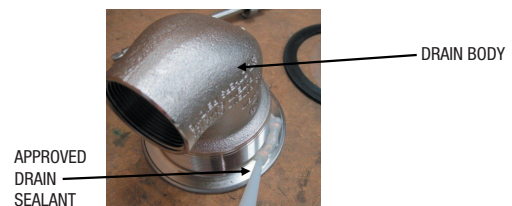
The sink must be accessible from its top side and its bottom side in order to install the accessories. Be aware that the backsplash is unsupported at this time and can be bent out of shape by trying to support the entire weight of the sink on the edge of the backsplash.

Install Sink Drains

There is one sink drain in the Power Prep that must be installed. The drain with a valve built into the body is installed in the bottom of the tank and oriented with the drain valve handle toward the front of the sink. The drain flange must be sealed to the bottom surface in the sink.

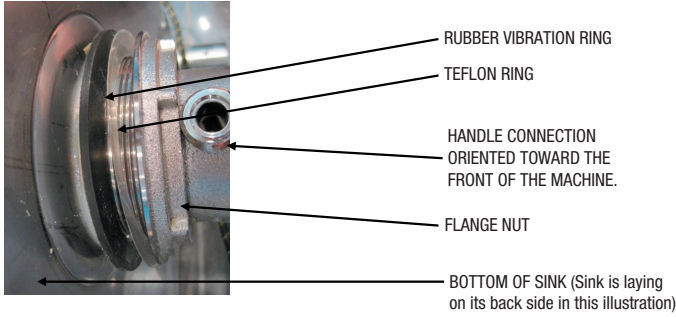
Apply a generous bead of a drain sealant around the lip of the drain body.

IMPORTANT: THE RIM OF THE DRAIN MUST SEAT ON THE SURFACE OF THE SINK OR IT WILL WORK LOOSE OVER TIME AND ALLOW WATER TO LEAK AROUND THE DRAIN.

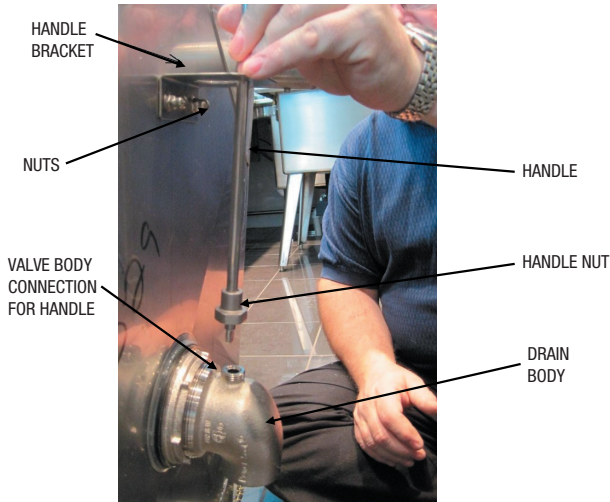


The drains with built-in valves will be oriented with the handle connection toward the front of the sink. From inside the sink, insert the drain through the drain hole and seat the flange against the sheet metal surface of the tank. Be sure that the sealant compresses to where the rim of the drain actually touches the sheet metal surface of the sink. If the drain does not touch the sink it will work loose and leak as the sealant compresses over time.

From the outside of the tank place the rubber vibration ring over the threaded body of the drain followed by the Teflon ring and then the drain nut. Tighten the nut “hand tight” until the handle is installed.



Using two nuts, attach the drain handle bracket to the studs on the bottom of the tank. Insert the drain valve handle through the bracket and into the drain body. It may be necessary to rotate the handle a partial turn to align the flats on the end of the handle shaft with the flats on the valve so that the handle will fully insert into the valve. Secure the handle to the valve body by screwing the handle nut onto the valve body connection.



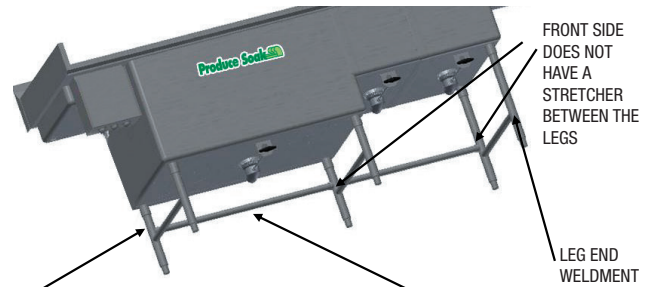
While holding the drain body to prevent it from rotating, tighten the flange nut with a wrench to firmly seat the nut against the rubber vibration ring and the vibration ring against the surface of the sink (approximately ¼ turn past “hand tight”). Wipe or trim the excess sealant from around the drain flange inside the sink. Allow the sealant to dry before filling the sink with water (see instructions on the side of the sealant container for drying time). After the sealant has dried, fill the sink with water and check for leaks around the drain.

Leg Installation

The Power Prep is usually shipped without the leg assembly attached to the machine. Different options have different types of leg assemblies. Some leg assemblies are all welded together and others are pieces that need to be assembled. If the leg set is welded together, skip to the section labeled “Leg Set and Sink”.

Leg Set Assembly

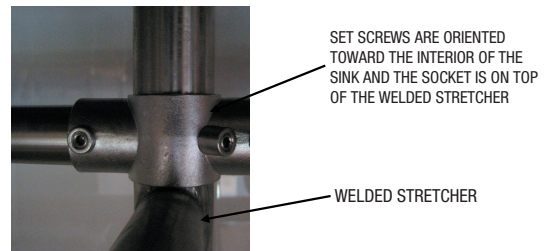
Locate the two leg end weldments and stretcher. The stretcher is the horizontal tube that connects between the legs to provide lateral stability to the legs. The long stretcher will be installed between the back legs of the wash tank.



INSTALL THE SOCKETS ABOVE THE WELD JOINT PRIOR TO INSERTING THE LEG WELDMENT INTO THE SOCKETS ON THE BOTTOM OF THE SINK.

INSTALL THE LONG STRETCHER UNDER THE BACK EDGE OF THE WASH SINK.

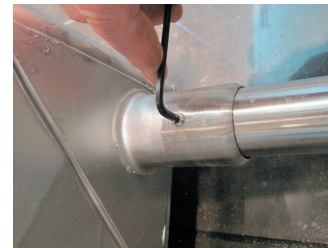
Orient the stretcher socket with the set screw facing toward the interior of the sink and then slide the stretcher sockets over the top of the leg sets so that the stretcher will be positioned above the welded joint of the leg when the legs are assembled onto the sink. Install the long stretcher and the other stretcher between the leg sets by inserting it into the sockets before inserting the legs into the sockets on the bottom of the tank and drain board.



Leg Set and Sink

Insert the leg assembly into the sockets on the bottom of the sink and drain board. Be sure that all the legs are seated in the bottom of the sockets. Use an allen wrench (5/32) to tighten the set screws in all of the sockets. After tightening the set screws, apply silicone sealant (supplied with the machine) to the set screw openings in order to seal the openings in a clean and sanitary manner.

IMPORTANT: AFTER TIGHTENING THE SET SCREWS, FILL THE OPENINGS IN A CLEAN AND SANITARY MANNER WITH THE SILICONE SEALANT THAT IS SUPPLIED WITH THE MACHINE.



Adjusting the Feet

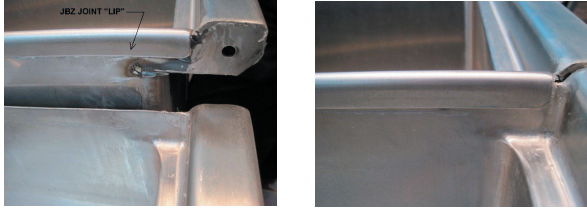
Use a tape measure and adjust the feet to the approximate height required. Turn the hexagon foot clockwise to shorten the height of the sink or counterclockwise to raise the height of the sink. Final adjustment of the feet will be done after the sink is in the installed location. Set the sink and leg assembly upright on its feet.

JBZ JOINT INSTALLATION

If the unit is shipped in one piece, skip this section. If the unit is shipped as two separate pieces, continue with this section.

Test Fit

Dry fit the two sections of the sink together to be sure that the joint has not been damaged in shipping. The lip of the rinse tank will slide over the edge of the wash tank.



Check the alignment and fit of the two sections. It may be necessary to adjust the leveling feet to achieve a correct fit. Ensure that all the feet are adjusted to firmly contact the floor.

Separate the two sections in order to apply sealant to the joint.

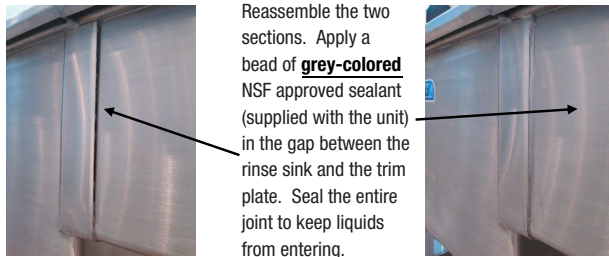
Mating and Sealing the Joint

Apply the **grey-colored** NSF approved sealant (supplied with the unit) to the underside of the JBZ lip and all interior surfaces of the wash tank trim plate.



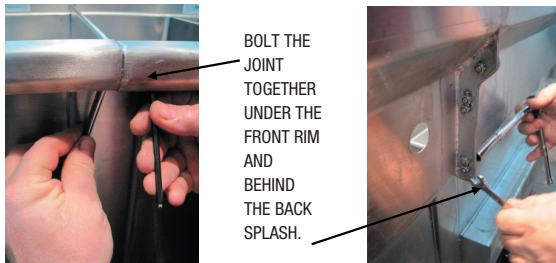
SEALANT APPLIED TO UNDERSIDE OF JBZ JOINT AND FACE OF THE END PLATE

SEALANT APPLIED TO INTERIOR SURFACE OF TRIM PLATE



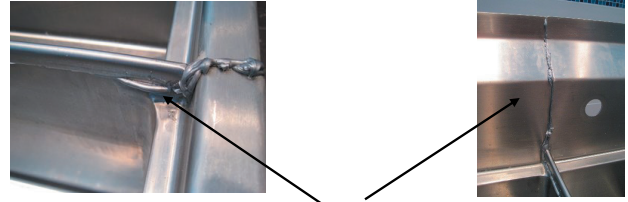
Reassemble the two sections. Apply a bead of **grey-colored** NSF approved sealant (supplied with the unit) in the gap between the rinse sink and the trim plate. Seal the entire joint to keep liquids from entering.

Bolt the channel rim and backsplash together using the nuts and bolts provided with the unit.



BOLT THE JOINT TOGETHER UNDER THE FRONT RIM AND BEHIND THE BACK SPLASH.

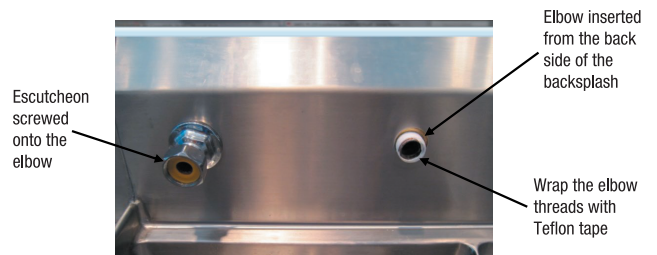
Seal the backsplash, channel rim, and all the gaps between the two sinks with the **grey-colored** NSF approved sealant that is supplied with the unit.



APPLY THE **GREY-COLORED** NSF APPROVED SEALANT TO ALL THE SINK JOINTS AND WIPE THE EXCESS AWAY LEAVING A SMOOTH SANITARY JOINT.

FAUCET INSTALLATION

Open the faucet package and locate the water connection elbows, faucet body and escutcheon assemblies. Apply Teflon tape to the threads of the elbows and insert them through the backsplash of the sink.

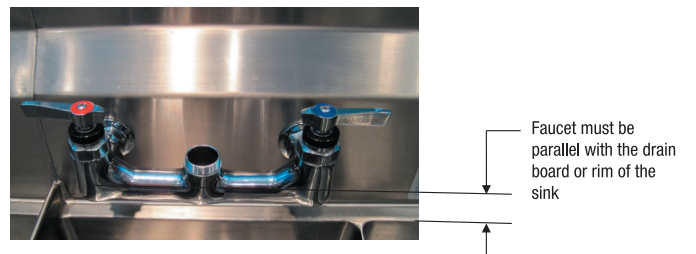


Escutcheon screwed onto the elbow

Elbow inserted from the back side of the backsplash

Wrap the elbow threads with Teflon tape

Loosely fit the escutcheons to the elbows and the faucet body. When the alignment of the body with the sink is confirmed, tighten the escutcheons onto the elbows and faucet body. From the back side of the backsplash, tighten the brass nuts on the elbows when the faucet body is parallel with the rim of the sink.



Faucet must be parallel with the drain board or rim of the sink

Complete the faucet assembly according to the manufacturer's instructions which are included with the faucet. Attach water lines to the faucet so that the lines extend below the sink. This will make the plumbing easier to complete when the machine is placed against the wall.

COMPLETING THE INSTALLATION

FINAL INSTALLATION STEPS

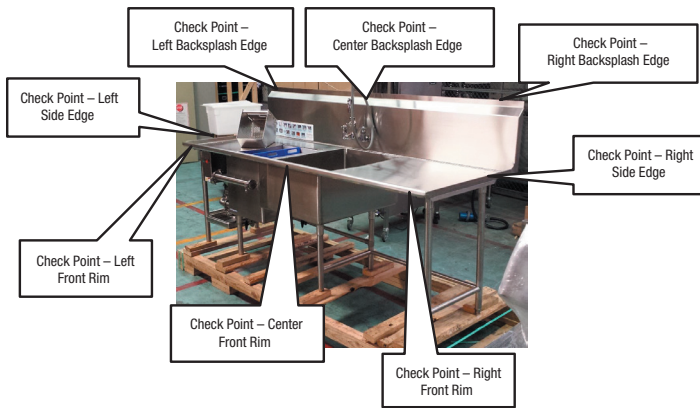
Machine Placement

Position the Power Prep so that the back splash rests against the wall and is placed according to the floor plan or customer's selected location. Examine the drain and water supply lines to determine that the plumbing can be completed when the Power Prep is in the final location. Verify that the plumbing from the faucet can be reached with the sink against the wall.

Leveling Requirements

Your unit requires it to properly leveled to ensure proper operation, ease of disassembly/ reassembly during cleaning, and proper drainage of sloped surfaces.

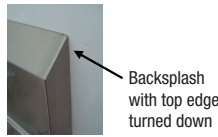
- Level bullet feet to the proper height ensuring all area making sufficient contact with the finished floor and adequately loaded.
- Please use check point areas shown for unit levelness:



Downturned-Backsplash (“Z-Clip” Installation)

If the Power Prep has an upturned backsplash, skip this step.

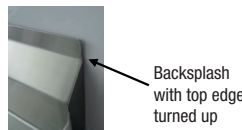
If the Power Prep has a backsplash that is downturned, it will be necessary to attach the provided Z-Clips to the wall. Using a level, adjust the feet on the Power Prep until the front rim and the rear rim of the sink are level. The sink must also be level front to back. Measure from the floor to the top edge of the backsplash, and then move the sink away from the wall. Locate the Z-Clips by marking a level line on the wall approximately 1/16” to 3/32” below the height of the backsplash top edge. Locate the wall studs and mark the locations. Align top edge of Z-Clip(s) to the marked line and securely fasten the Z-Clips to the wall, using fasteners provided. Install screws directly to the walls’ studs whenever possible. The Z-Clips should be spaced as evenly as possible. Move the sink to the wall and lift the back edge over the Z-Clips.



Upturned-Backsplash

If the Power Prep has a downturned backsplash, skip this step.

Using a level, adjust the feet on the Power Prep until the front rim and the rear rim of the sink are level. The sink must also be level front to back. Locate the wall studs and mark their location on the top edge of the back splash. Measure down 3/4” from the top of the backsplash and then drill 1/4” diameter holes through the back splash in line with the center of the studs. Use the #10 stainless steel screws (included with the Power Prep) to attach the Power Prep directly to the wall.



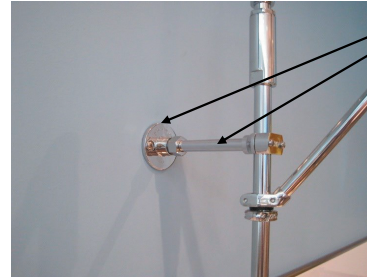
IMPORTANT: THE PRODUCE SOAK SINK ASSEMBLY MUST BE LEVEL FROM SIDE TO SIDE AND FRONT TO REAR WITH ALL THE FEET MAKING FIRM CONTACT WITH THE FLOOR.

Seal around the Backsplash and Screws

Examine the installation to see that the wall and backsplash are clean and free of dust and oils. Seal the top and sides of the backsplash to the wall using the clear NSF approved sealant provided with the Power Prep. Seal around the screw heads to be sure they do not allow water to leak behind the backsplash. Wipe off all excess sealant leaving a smooth, clean and sanitary bead of sealant on all the edges.

Rinse Riser and Anchor Installation

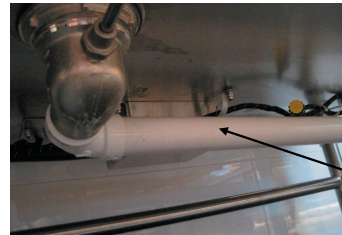
Follow the faucet manufacturer's directions on the assembly of the faucet and riser. Anchor the riser supports to the wall using the flange plate provided with the riser assembly. It may be necessary to cut the support rods to a shorter length in order to fit between the wall and the riser.



Plumbing Connections

Connect the water supply lines to the faucet.

Connect all the drains to the waste drain connection.



IMPORTANT: INSTALLER IS RESPONSIBLE FOR PURGING THE WATER LINES ACCORDING TO LOCAL CODE REQUIREMENTS, AND FOR ALL PLUMBING CONFORMING TO LOCAL BUILDING CODES WHICH MAY BE DIFFERENT FROM ILLUSTRATIONS SHOWN IN THIS MANUAL.

Electrical Connections

The final electrical connections between the Power Prep and the electrical supply must be made by a licensed electrician.

For PS-300, Installation of Water-Tight Disconnect Box with Switch, refer to instructions supplied with the disconnect box to complete wiring for this device. If instructions are not followed the warranty will be voided.

The Power Prep has several options for motors. Review the information tag for determining the specific requirements of the machine being installed (see the table on page 25 of this instruction booklet for voltage and current requirements of your unit).

Shelving

Reinstall any shelving that was removed for convenience of installation. If the shelving is damaged or corroded, it is recommended that the shelving be replaced.

VALIDATING THE INSTALLATION

TESTING THE COMPONENTS

Check for Leaks

- Turn on the water supply and inspect all joints for leaks.
- Close the drain valve, fill the sink with water and inspect the drain fittings for leaks.
- Open the drain valve and inspect the drain joins for leaks as the water is draining from the sink.

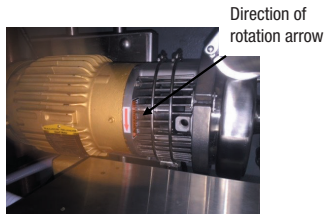
Check the Electrical Installation

- Check that the electrical connection conforms to the values listed below:

Power Prep® 300 Series Systems

| HP | PHASE | Hz | System Voltage | Minimum Overcurrent Protective Device (Amps) |
|----|-------|----|----------------|--|
| 2 | 1 | 60 | 208 | 15 |
| 2 | 1 | 60 | 230 | 15 |
| 2 | 3 | 60 | 208 | 10 |
| 2 | 3 | 60 | 230 | 10 |
| 2 | 3 | 60 | 460 | 10 |

- Verify that there are no loose wires or open holes in the electrical enclosure.
- Check motor rotation for the correct direction as indicated by the arrow on the pump housing.
- Fill the wash tank with water and press the "ON" button. Have a qualified electrician verify that the amp draw on the electrical supply is within the specifications on the identification tag.



IMPORTANT: MOTOR ROTATION MUST BE THE CORRECT DIRECTION FOR THE MACHINE TO OPERATE CORRECTLY.

Check the Faucet Operation

- Open each faucet knob and verify that water flows from each hand control. Verify that hot and cold water are running from the correct hand control.
- With the water valves open, turn the center knob to see that it will shut off flow to the faucet and that the hand sprayer is still functional.