



# PUMP/FILL STATIONS

## MOBILE STATION MODEL CKPF

Mobile Pump/Fill Station with integrated rotary positive displacement pump, for the transfer of hot and cold food from a steam jacketed kettle into flexible plastic casings or other containers. Pedestal mounted control package allows fast and simple adjustment of pumping speed and volume.

Certifications:

PROJECT NAME:	
LOCATION:	
ITEM NO:	
QTY:	
MODEL NO:	
AIA NO:	
SIS NO:	
CSI SECTION:	11400



### STANDARD FEATURES:

- Heavy duty stainless steel construction
- Unit mounted on (4) 5 inch heavy duty locking swivel casters
- Quick action air activated product flow control valve
- (2) 3 ft USDA food transfer hose sections with fittings to interconnect kettle and PumpFill
- Exterior rear mounted rotary positive displacement pump
- Full surface spill tray with drain and removable stainless steel grate
- 10 ft drain hose
- 15 ft air hose
- 25 ft electrical cord with L6-30P
- Manufactured to latest sanitary standards, food code and HACCP compliant
- NSF listed

### CONTROL PACKAGE:

The CapKold CKPF Mobile Pump/Fill Station control panel is pedestal-mounted to the fill station. The height of the control panel is designed to reduce operator fatigue and simplify changes of pump speed and volume settings for different products.

#### Operating controls include:

- Manual, Auto or Continuous pumping – operator selectable
- Pump Speed (0 to 20 gallons per minute – GPM) – operator input
- Foot-activated fill switch
- Knee-operated STOP switch
- Digital display of volume pumped per casing, total casings pumped and total volume pumped per batch

**INSTALLATION:** Unit requires single phase electric service.

### OPTIONS/ACCESSORIES:

Air-Operated Casing Clipper (Not NSF Certified, Sold Separately)

Product temperature monitor and indicator alert when product temperature drops below user preset limit

Additional 3 ft USDA food transfer hose sections with fittings

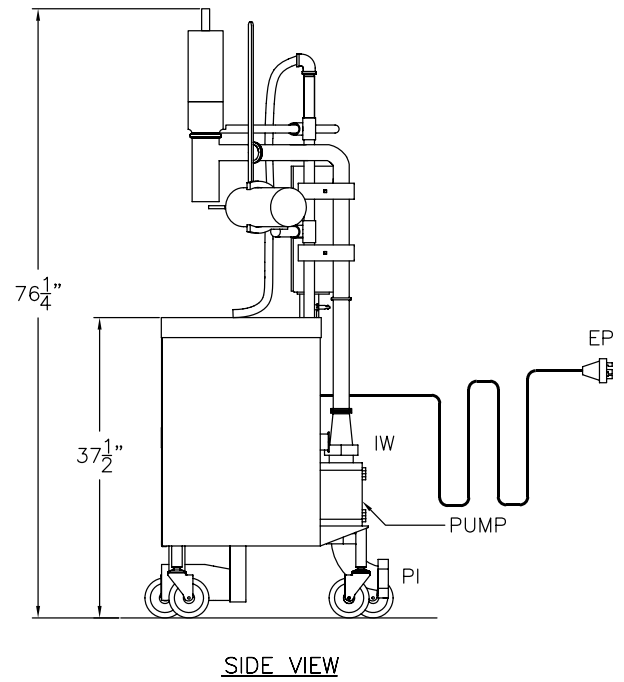
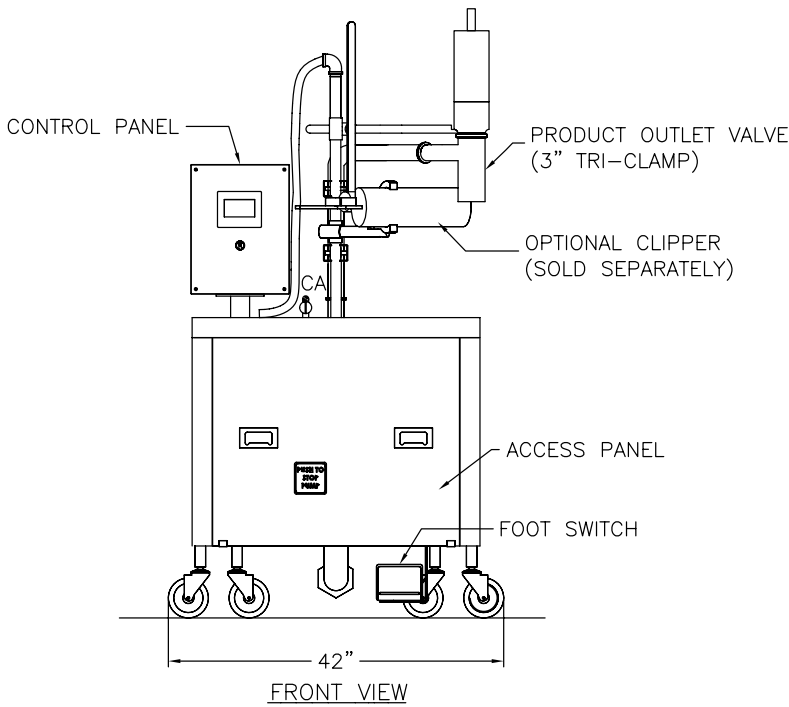
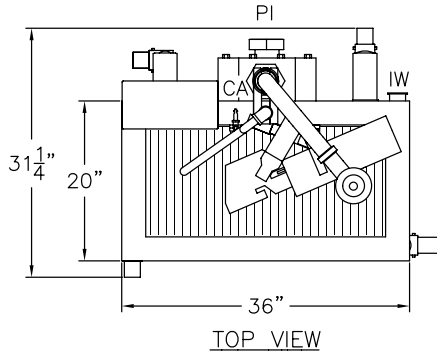
Casing Bin Holder (mounts to side of station and holds empty casing bags)

Pan Fill Adapter

Stand Alone Label Printer

### ADDITIONAL RESOURCES:

- [Request A Quote](#)
- [Sales Tools](#)
- [Find A Rep](#)



UTILITIES				
SYMBOL	CA	IW	EP	PI
DESCRIPTION	COMPRESSED AIR INLET	INDIRECT WASTE	ELECTRICAL POWER SUPPLY	PRODUCT INLET
CONNECTION	3/8" QUICK-DISCONNECT (SUPPLIED W/ 15 FT HOSE)	2" ID HOSE (SUPPLIED W/ 10 FT HOSE)	NEMA L6-30P (SUPPLIED W/ 25 FT CORD)	PRODUCT INLET (SUPPLIED W/ (2) 3 FT USDA FOOD TRANSFER HOSE SECTIONS)
UTILITY REQUIREMENT	8 CFM @ 80-90 PSI	N/A	208/1/60 @ 15 AMPS	N/A