



# STEAM SOUS VIDE

## WATER COOLED REMOTE REFRIGERATION MODEL WJ100-REF-W

Remote Refrigeration Package Model WJ100-REF-W self-contained water cooled condensing unit consisting of a compressor, shell and tube condenser, and electrical control and safety subsystems. Unit shall be designed and sized to provide adequate water chilling capacity for the WaterJet® Chiller/Cook Tank, and will come evacuated and nitrogen charged for use with R-513A or other specified refrigerant. Unit shall be designed for interior, utility room installation.

### STANDARD FEATURES:

- Semi-hermetic compressor
- Sealed high efficiency compressor for indoor use only
- Compressor and condenser coils evacuated and nitrogen charged (for use with R-513A or other specified refrigerant)
- Water cooled condensing unit and matching evaporator
- Welded pump-down receiver tank with pressure relief valve
- Suction accumulator with factory installed refrigerant filter/dryer with replaceable core
- Compressor receiver valves factory mounted
- Compressor and control cabinet fully enclosed with corrosion resistant galvanized panels

### CONTROL PACKAGE:

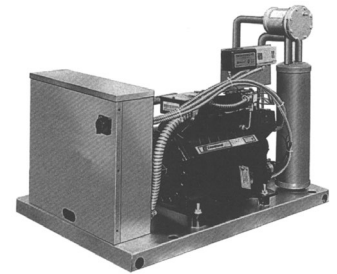
- Main power disconnect
- Head pressure control for all climate ambient temperature operation
- Fuse/panel protection system
- Both receiver outlet and liquid outlet sight glasses
- High/low pressure control
- Flood type head pressure control

**INSTALLATION:** WaterJet Remote Refrigeration Package is designed for indoor installation and for use with customer-supplied cooling water. **CONTACT UNIFIED BRANDS FOR ANY REFRIGERATION PIPING RUN OVER 100 FEET OR INSTALLATION AT ANY ELEVATION HIGHER THAN 10 FEET ABOVE THE WJ100 UNIT. PROFESSIONAL CONSULTANT AND/OR MECHANICAL CONTRACTOR MUST DETERMINE SUITABILITY OF INSTALLATION SITE AND PROVIDE FOR ALL NECESSARY SITE PREPARATIONS.**

Refrigerant piping between the WaterJet Tank unit and water cooled Refrigeration Package must be installed by a licensed **INDUSTRIAL** refrigeration contractor in accordance with all applicable plumbing and electrical codes, good practice and the detailed installation instructions provided with both system components.

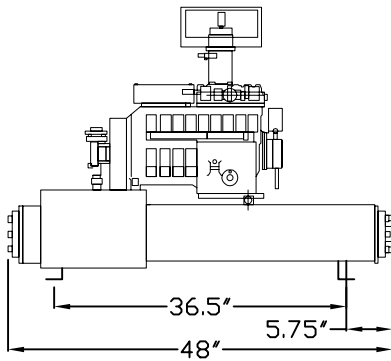
### Certifications:

PROJECT NAME:	
LOCATION:	
ITEM NO:	
QTY:	
MODEL NO:	
AIA NO:	
SIS NO:	
CSI SECTION:	11400

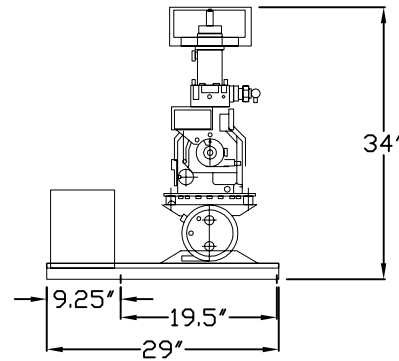


### ADDITIONAL RESOURCES:

[Request A Quote](#)[Sales Tools](#)[Find A Rep](#)



ELEVATION VIEW



SECTION VIEW

UTILITY REQUIREMENTS	
DESCRIPTION	CONNECTION
LIQUID LINE	7/8" OD TUBE
GAS SUCTION LINE	1-5/8" OD TUBE
COOLING WATER IN	2" NPT
COOLING WATER OUT	2" NPT
SAFETY VALVE EXHAUST	PIPE AS REQUIRED
COOLING WATER	50 GPM @ 85°F RETURN TEMP WITH Δ T OF 100°F

UTILITY REQUIREMENTS (CONT.)	
DESCRIPTION	CONNECTION
POWER IN	208-240/3/60 MCA 76 COMPRESSOR RLA 59.6 LRA 275
	460/3/60 MCA 38 COMPRESSOR RLA 29.06 LRA 138
APPROX. WEIGHT	800 LBS EMPTY
REFRIGERANT	513A (SEE NOTE #10)
CHARGE REQUIRED	NOTE #2
PERFORMANCE @ 105°F CONDENSING TEMPERATURE 108700 BTU @ 10 DEGREE SST	

## NOTES:

1. TRAPS MUST BE INSTALLED EVERY 10FT OF VERTICAL RISE/FALL IN REFRIGERATION LINES
2. REFRIGERATION CHARGE IS TEMPERATURE AND PIPING LENGTH DEPENDENT. APPROXIMATE 66 TO 100 POUNDS.
3. GENERAL STRUCTURAL LOCATION SHOWN. SPECIFIC STRUCTURAL LOCATIONS AND FASTENING MEANS TO BE DETERMINED AT INSTALLATION.
4. GENERAL UTILITY CONNECTION LOCATIONS SHOWN. ACTUAL LOCATION AND DIMENSIONS DETERMINED BY SITE SPECIFICS.
5. KNOCKOUT LOCATIONS FOR ELECTRICAL POWER ARE LOCATED IN VARIOUS POSITIONS ON REAR OF PANEL.
6. SPECIFIED DIMENSION ARE MINIMUM FOR WORKING CLEARANCE ONLY. AIR FLOW REQUIRES AT LEAST TWO SIDES OPEN (NO WALLS).
- COMPLIANCE WITH ALL STATE AND LOCAL CODES IS THE RESPONSIBILITY OF THE INSTALLER.
7. FOR INDOOR USE ONLY.
8. ALL DIMENSIONS ±2.00".
9. DUE TO CONTINUAL PRODUCT IMPROVEMENT, ALL DESIGNS, SPECIFICATIONS AND DIMENSIONS SUBJECT TO CHANGE WITHOUT NOTICE.
10. DO NOT EXCEED 100 FT OF REFRIGERATION LINE LENGTH, IF A GREATER LENGTH IS REQUIRED CONTACT GROEN.